

N.W. POR. SEC. 31 T.1S. R.1W. M.D.B.M.

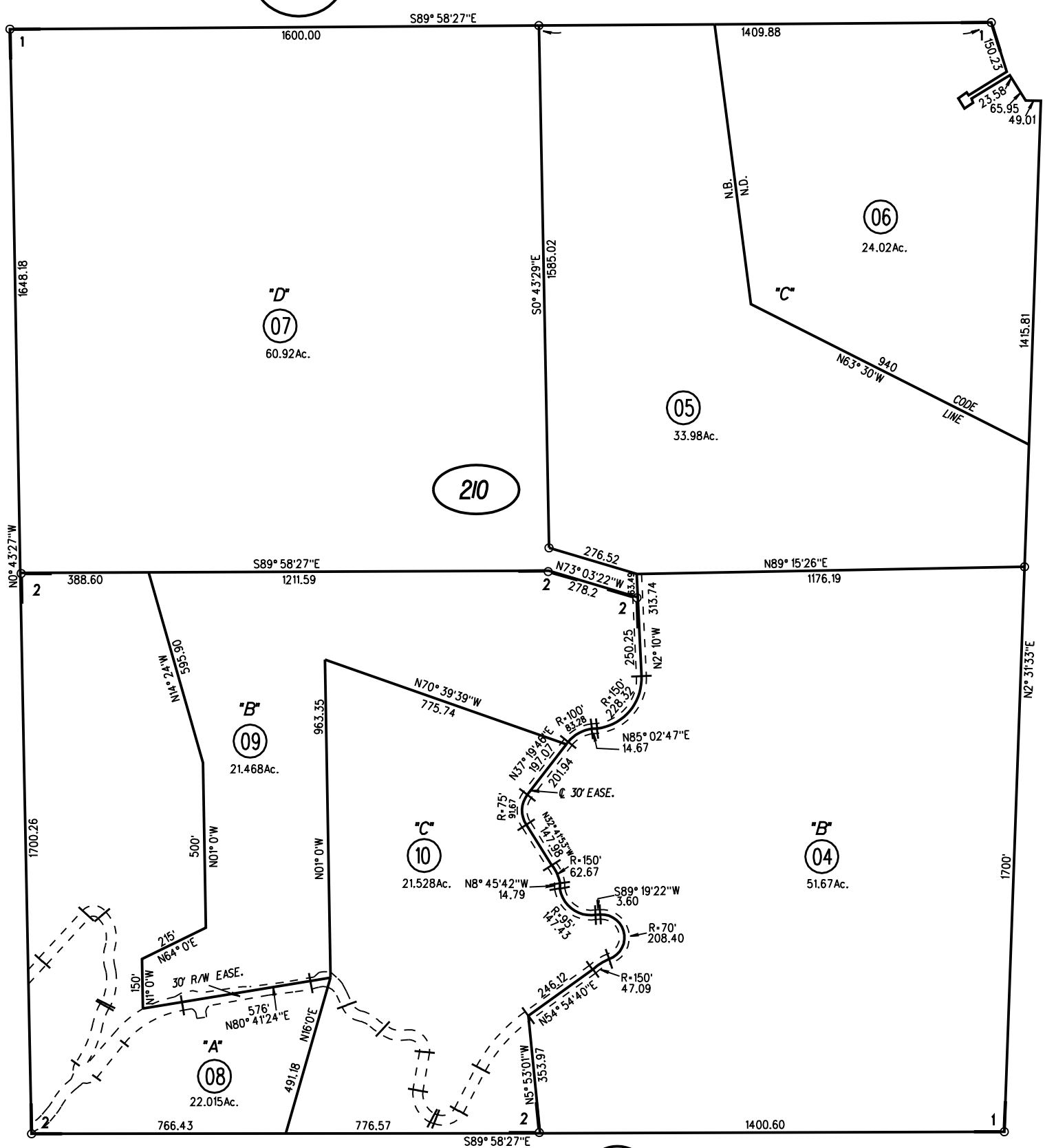
1- 66PM15,16&17 5-24-78

2- 207PM6 3-28-12

P.B.
199



P.B.
199



NOTE: THIS MAP WAS PREPARED FOR ASSESSMENT PURPOSES ONLY. NO LIABILITY IS ASSUMED FOR THE ACCURACY OF THE INFORMATION DELINEATED HEREON. ASSESSOR'S PARCELS MAY NOT COMPLY WITH LOCAL LOT SPLIT OR BUILDING SITE ORDINANCES.

210

207
PM6
11/6/12

6-28-78
ASSESSOR'S MAP
BOOK 208 PAGE 21
CONTRA COSTA COUNTY,CALIF.