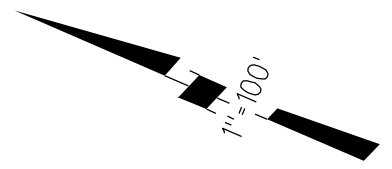


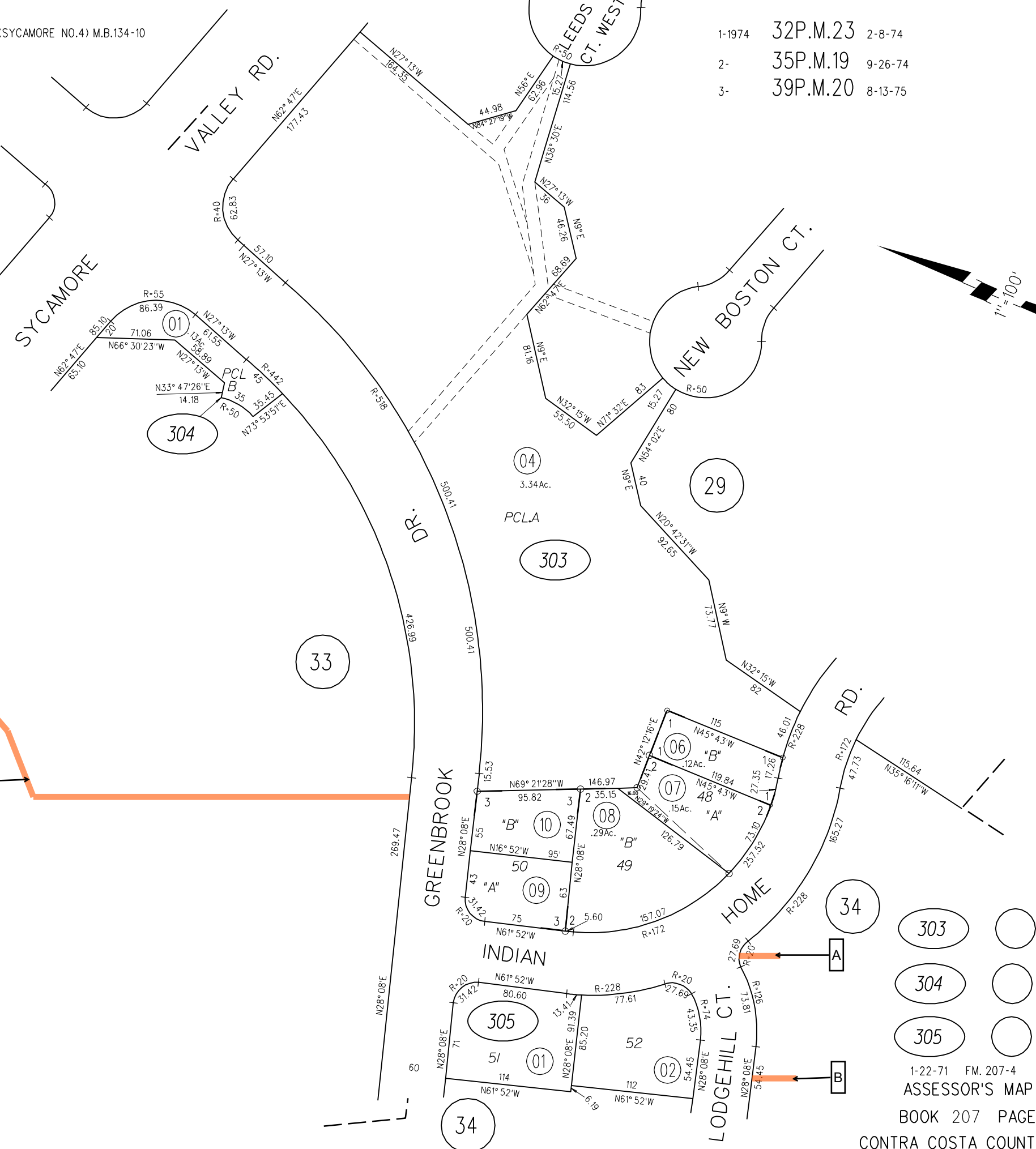
1-1974 32P.M.23 2-8-74  
 2- 35P.M.19 9-26-74  
 3- 39P.M.20 8-13-75

**A- OFF. DED.**  
 6276 OR 402  
 12-16-70  
 TERMINATED 04-06-72  
**B- OFF. DED.**  
 6276 OR 397  
 12-16-70  
 TERMINATED 04-06-72

OFF. DED.  
 6276 OR 387  
 12-01-70  
 TERMINATED  
 04-06-72



PB  
 216



- 303
- 304
- 305