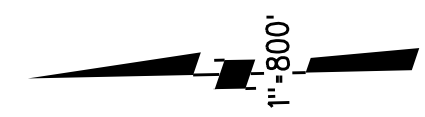
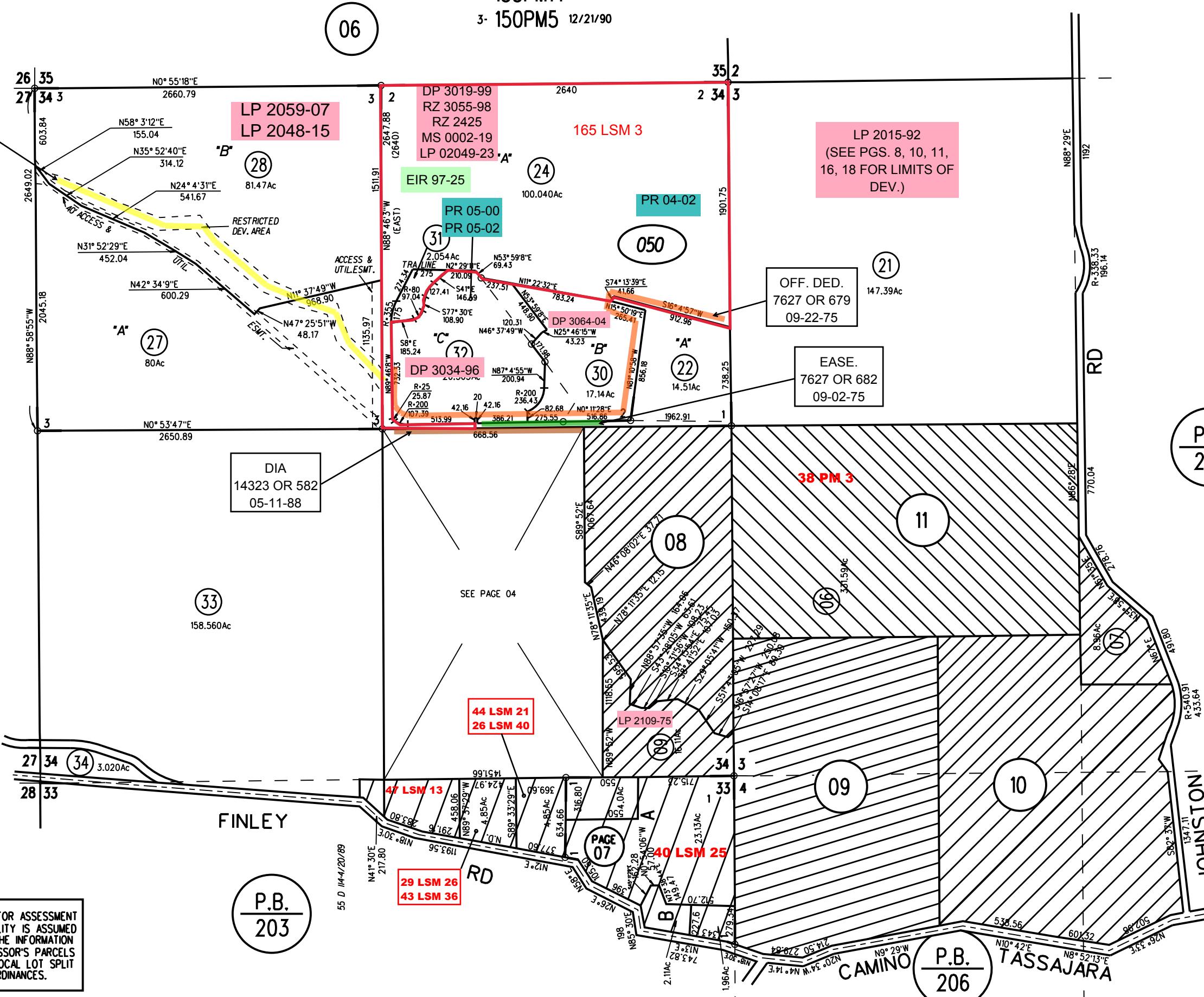


POR SEC'S 3 & 4 T2S R1E MDBM  
SEC 34 & POR SEC 33 T1S R1E MDBM

- 1- 39PM32 8/26/75
- 2- 133PM14 5/11/88
- 3- 150PM5 12/21/90



GD OF DEV. RTS.  
16312 OR 923  
# 90-261546  
12-21-90



03

06

050

P.B.  
205

08

11

33  
158.560Ac

44 LSM 21  
26 LSM 40

09

09

10

27 34  
28 33  
3.020Ac

P.B.  
203

PAGE 07

40 LSM 25

29 LSM 26  
43 LSM 36

P.B.  
206

050

33,34  
7/12/23

NOTE: THIS MAP WAS PREPARED FOR ASSESSMENT PURPOSES ONLY. NO LIABILITY IS ASSUMED FOR THE ACCURACY OF THE INFORMATION DELINEATED HEREON. ASSESSOR'S PARCELS MAY NOT COMPLY WITH LOCAL LOT SPLIT OR BUILDING SITE ORDINANCES.