

OFF. DED.  
9649 OR 61  
12-07-79

TERM. OF OFF. DED.  
12347 OR 310  
06-05-85

A - 1979 ROLL - TRACT 5352 M.B. 221-25

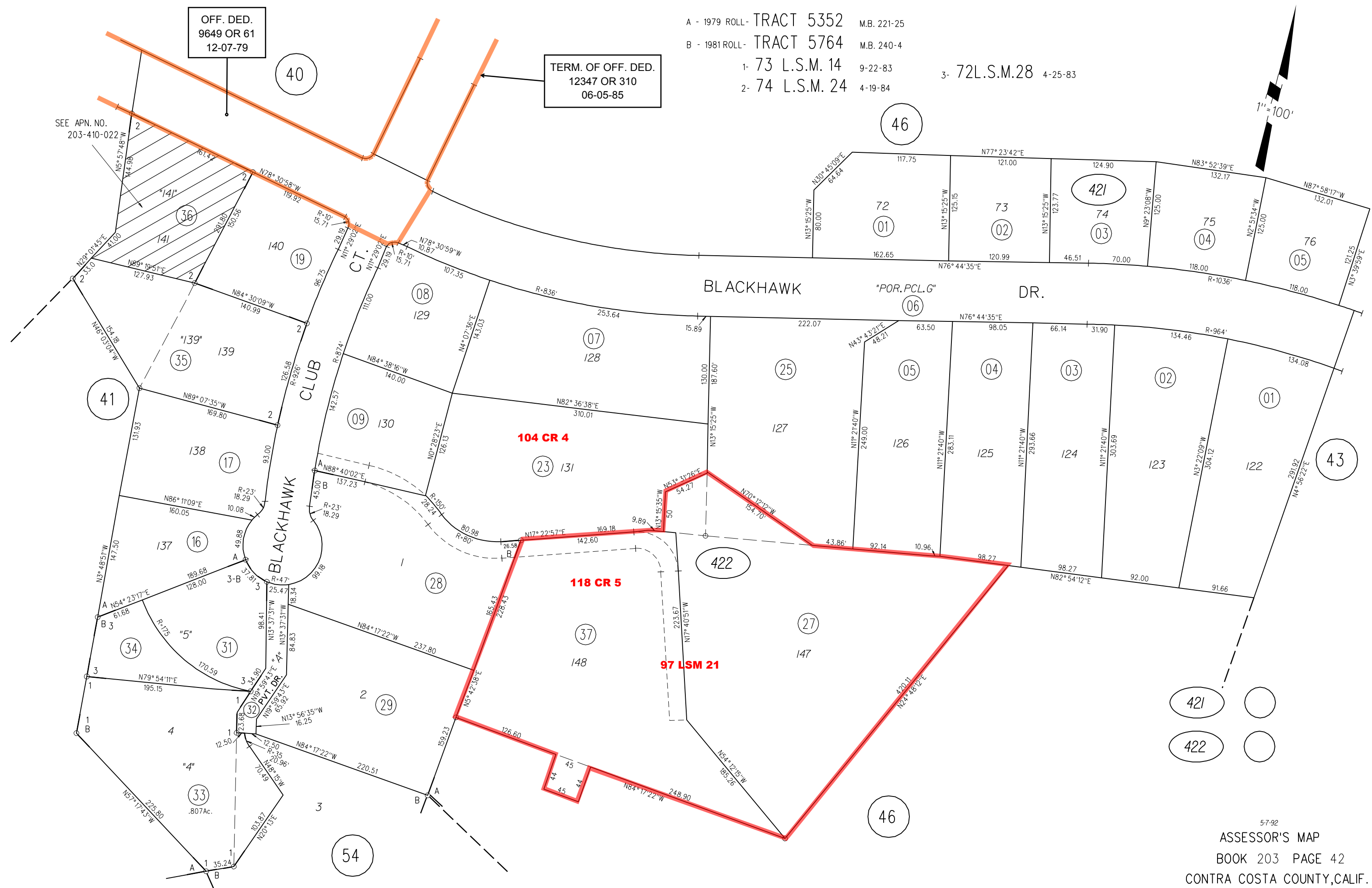
B - 1981 ROLL - TRACT 5764 M.B. 240-4

1- 73 L.S.M. 14 9-22-83

2- 74 L.S.M. 24 4-19-84

3- 72 L.S.M. 28 4-25-83

1" = 100'



421

422