

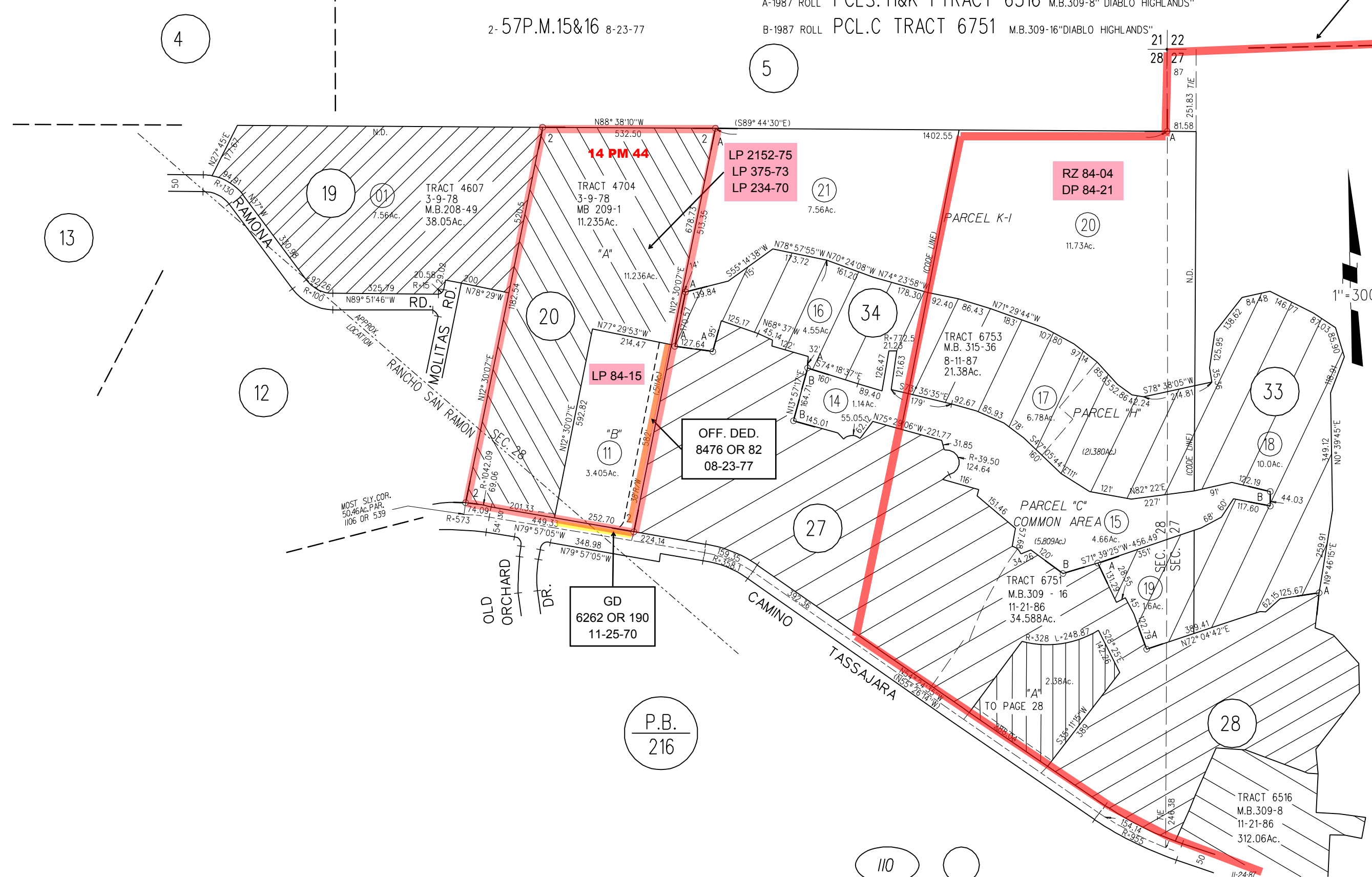
POR. RANCHO SAN RAMON  
 POR. SEC. 27 & 28, T.1S., R.1W., M.D.B.M.

2-57P.M.15&16 8-23-77

A-1987 ROLL PCLS. H&K-1 TRACT 6516 M.B.309-8" DIABLO HIGHLANDS"

B-1987 ROLL PCL.C TRACT 6751 M.B.309-16"DIABLO HIGHLANDS"

92 PM 45



ASSESSOR'S MAP

BOOK 202 PAGE 11

FM. 56-9 6/67 CONTRA COSTA COUNTY, CALIF.