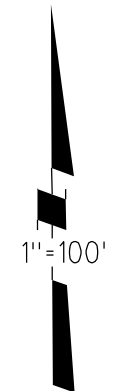
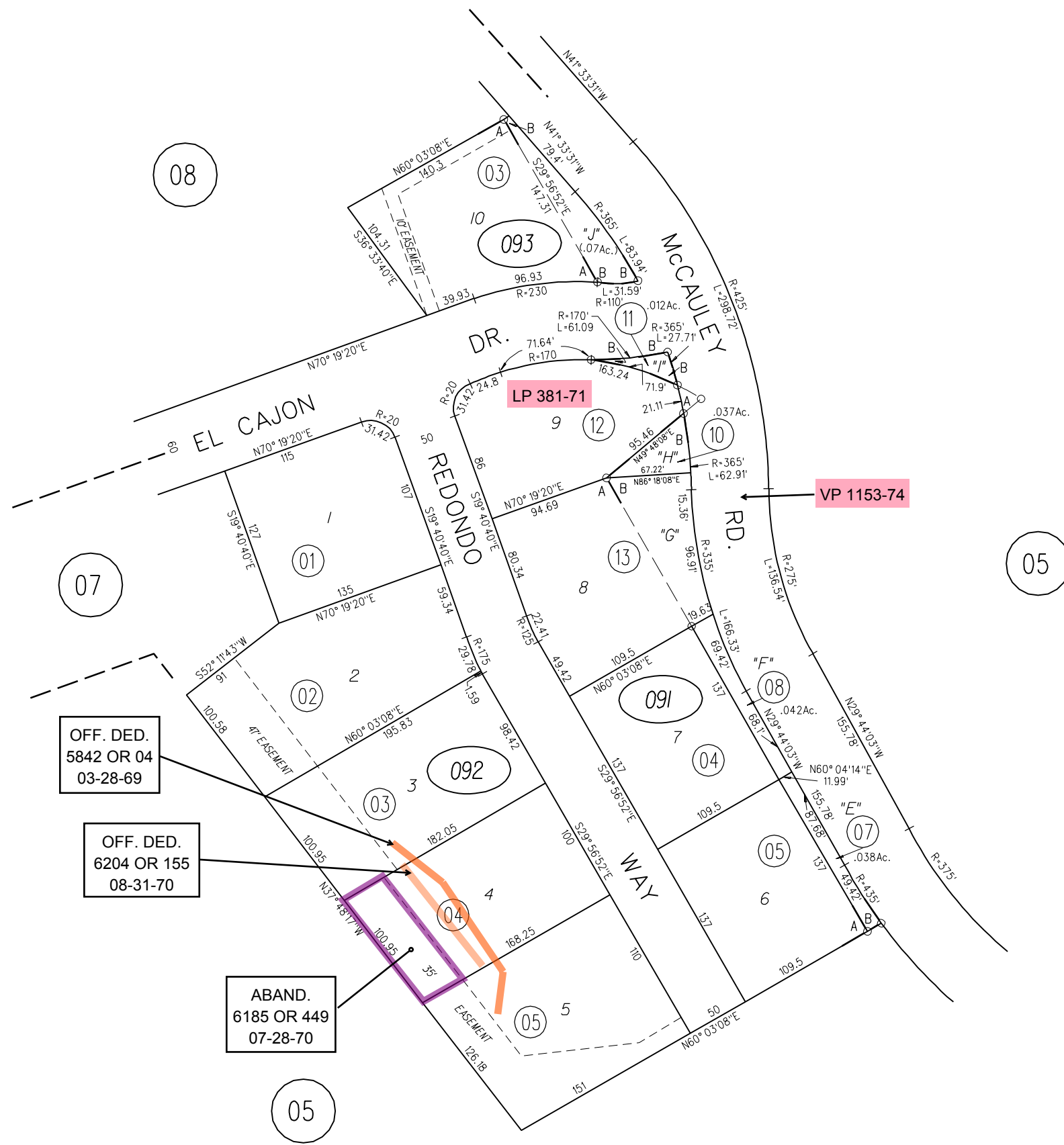


POR SEC 21, T1S, R1W, MDB&M

A- 1966 ROLL- TRACT 3256 (CAMINO VERDE UNIT NO 2) MB 108-3

B- 1990 ROLL- POR TRACT 6886 (RASSIER RANCH) MB 338-41



OFF. DED.
5842 OR 04
03-28-69

OFF. DED.
6204 OR 155
08-31-70

ABAND.
6185 OR 449
07-28-70

NOTE: THIS MAP WAS PREPARED FOR ASSESSMENT PURPOSES ONLY. NO LIABILITY IS ASSUMED FOR THE ACCURACY OF THE INFORMATION DELINEATED HEREON. ASSESSOR'S PARCELS MAY NOT COMPLY WITH LOCAL LOT SPLIT OR BUILDING SITE ORDINANCES.

091	03
092	
093	03

11/10/04
7/9/04