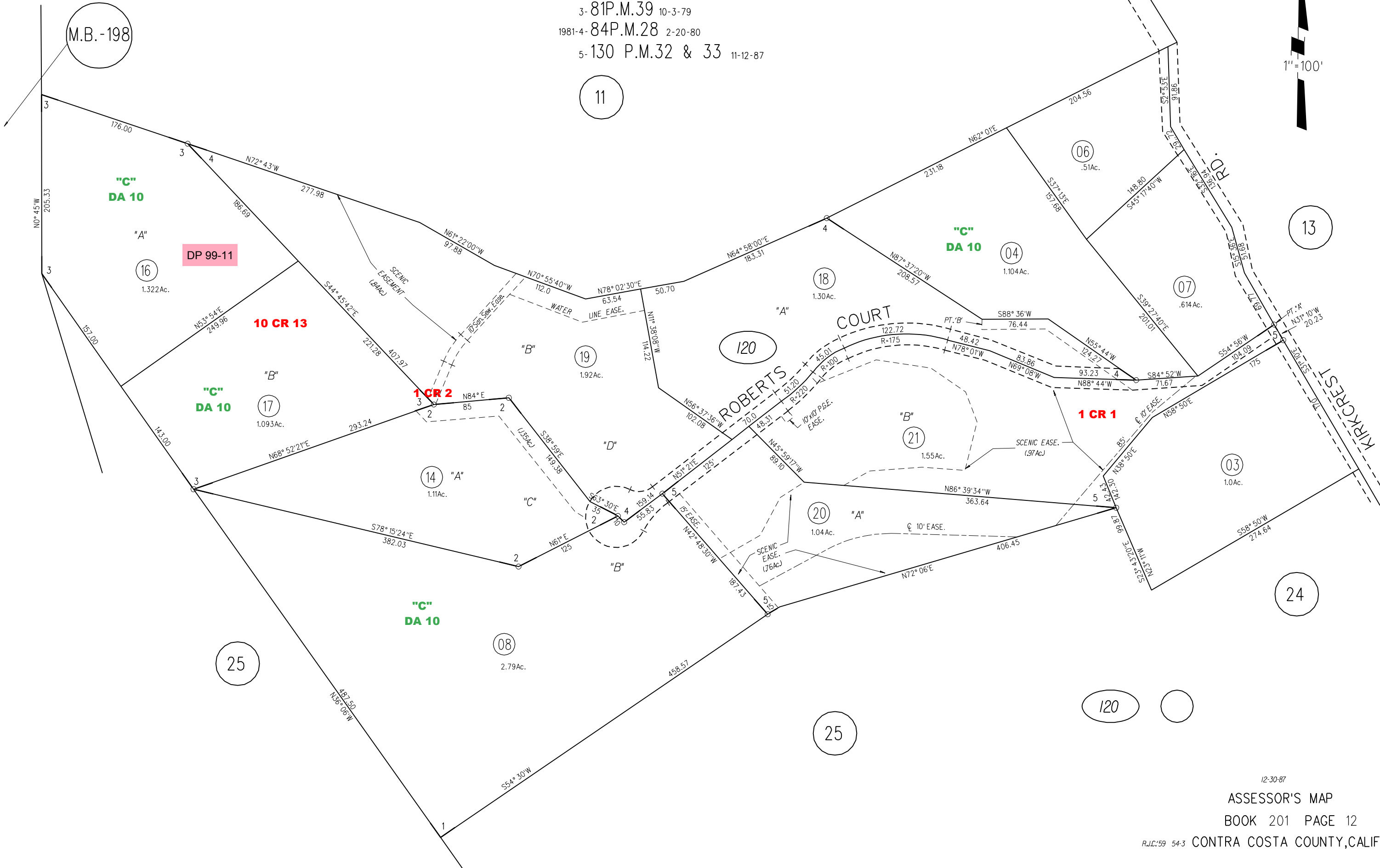


RO. SAN RAMON

- 1- 4PM29 7/18/68
- 2- 41P.M.24 & 25 12-5-75
- 3- 81P.M.39 10-3-79
- 1981-4- 84P.M.28 2-20-80
- 5- 130 P.M.32 & 33 11-12-87



M.B. -198

11

13

24

25

25

120

120