

POR SEC 1T2S R2W 25 & 36 T1S R2W MDBM

U-15

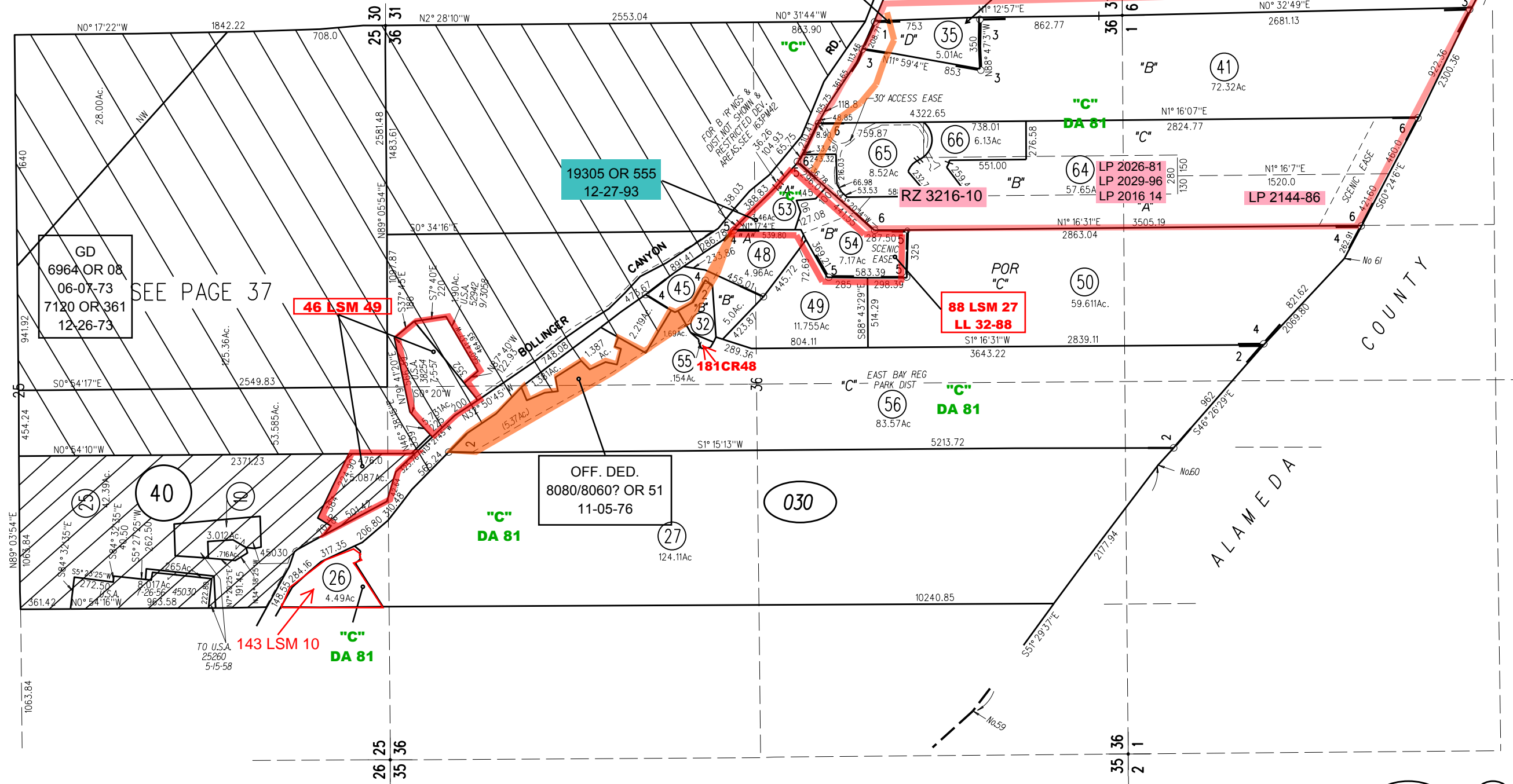
- 1- POR 47PM33 8-31-76
- 2- 49PM5 10-13-76
- 3- 65PM14 4-25-78
- 4- 83PM47 1-18-80
- 5- 163PM42 12-27-93
- 6- 197PM50 8/22/06 "08 ROLL"

BK 208

OFF. DED. 8034 OR 852 09-29-76



45 LSM 16



09

01

030

02

030

64-66

NOTE: THIS MAP WAS PREPARED FOR ASSESSMENT PURPOSES ONLY. NO LIABILITY IS ASSUMED FOR THE ACCURACY OF THE INFORMATION DELINEATED HEREON. ASSESSOR'S PARCELS MAY NOT COMPLY WITH LOCAL LOT SPLIT OR BUILDING SITE ORDINANCES.