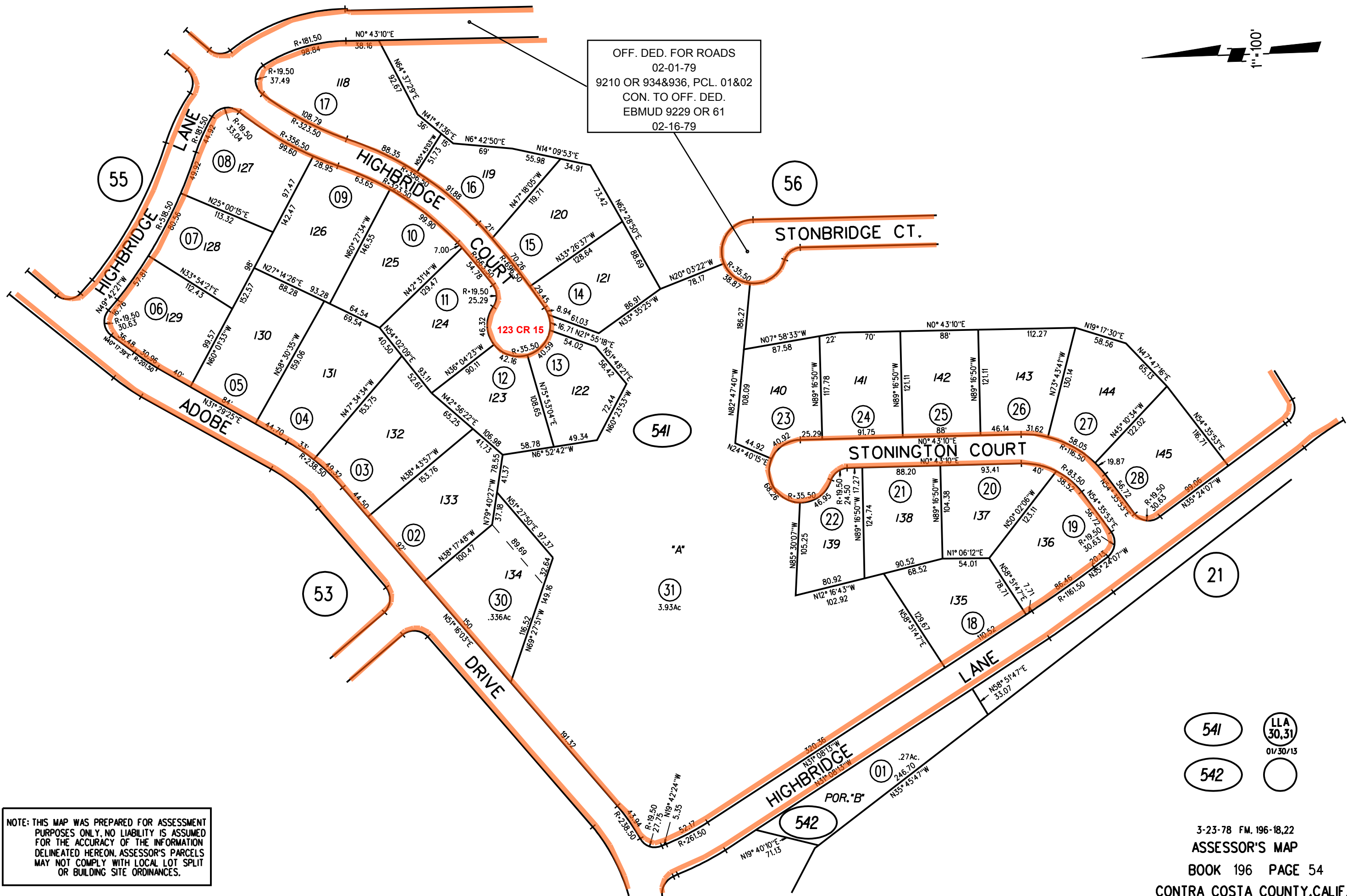




OFF. DED. FOR ROADS  
02-01-79  
9210 OR 934&936, PCL. 01&02  
CON. TO OFF. DED.  
EBMUD 9229 OR 61  
02-16-79



NOTE: THIS MAP WAS PREPARED FOR ASSESSMENT PURPOSES ONLY. NO LIABILITY IS ASSUMED FOR THE ACCURACY OF THE INFORMATION DELINEATED HEREON. ASSESSOR'S PARCELS MAY NOT COMPLY WITH LOCAL LOT SPLIT OR BUILDING SITE ORDINANCES.

541 (LLA 30.31) 01/30/13  
542