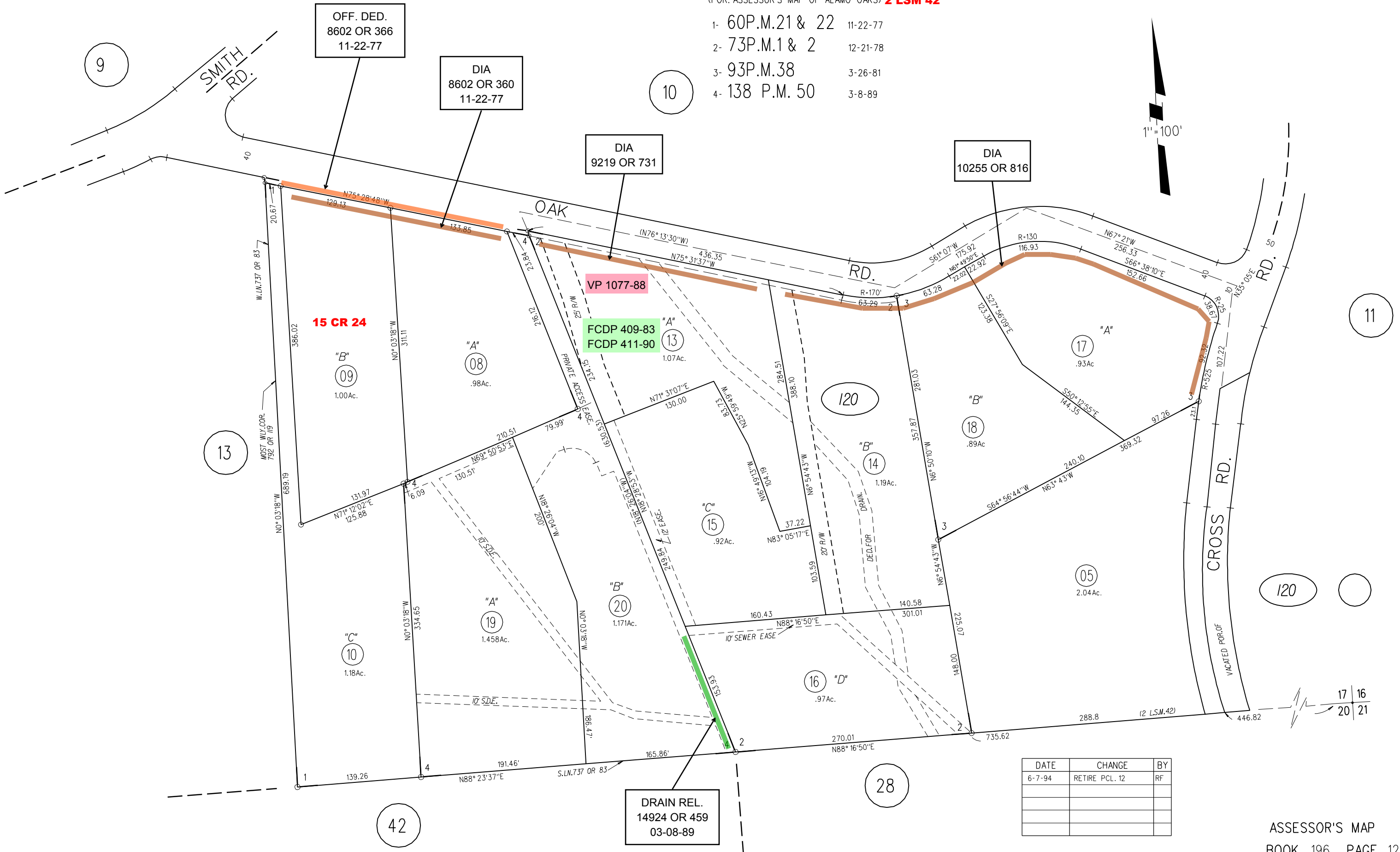
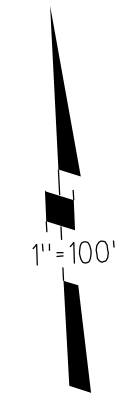


POR. SE 1/4 SEC. 17, T. 15S., R. 12W., M.D.B.M.

(POR. ASSESSOR'S MAP OF ALAMO OAKS) 2 LSM 42

- 1- 60P.M.21 & 22 11-22-77
- 2- 73P.M.1 & 2 12-21-78
- 3- 93P.M.38 3-26-81
- 4- 138 P.M. 50 3-8-89



OFF. DED.
8602 OR 366
11-22-77

DIA
8602 OR 360
11-22-77

DIA
9219 OR 731

DIA
10255 OR 816

VP 1077-88

FCDP 409-83
FCDP 411-90

DRAIN REL.
14924 OR 459
03-08-89

15 CR 24

DATE	CHANGE	BY
6-7-94	RETIRE PCL. 12	RF