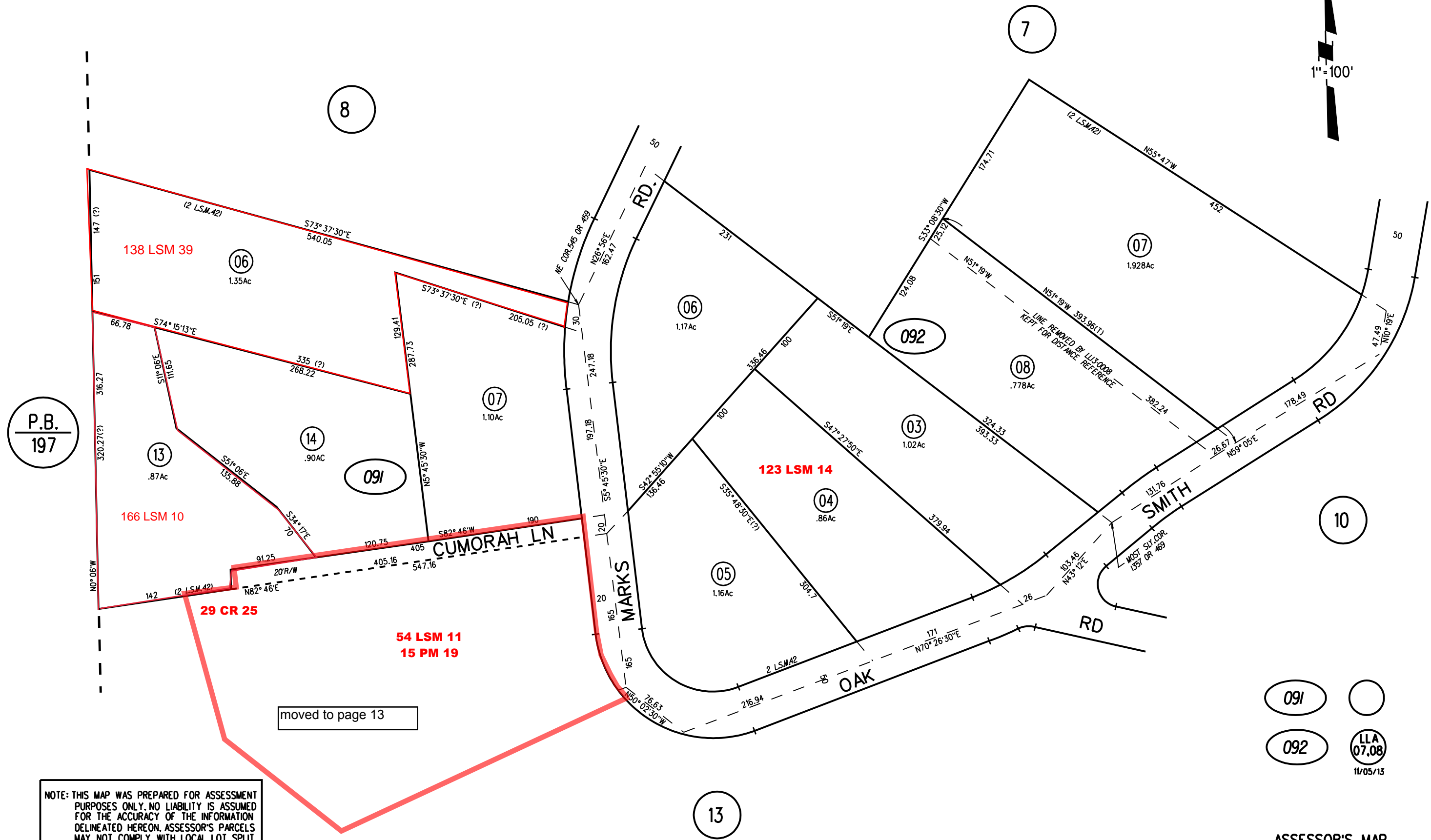
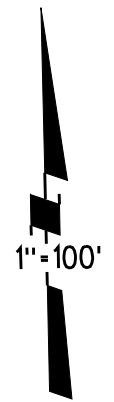


POR. SE 1/4 SEC. 17, T. 1S., R. 1W., M.D.B.M.
 (POR. ASSESSOR'S MAP OF ALAMO OAKS) **2 LSM 42**



P.B.
197

moved to page 13

NOTE: THIS MAP WAS PREPARED FOR ASSESSMENT PURPOSES ONLY. NO LIABILITY IS ASSUMED FOR THE ACCURACY OF THE INFORMATION DELINEATED HEREON. ASSESSOR'S PARCELS MAY NOT COMPLY WITH LOCAL LOT SPLIT OR BUILDING SITE ORDINANCES.

091
 092
 LLA 07.08
 11/05/13