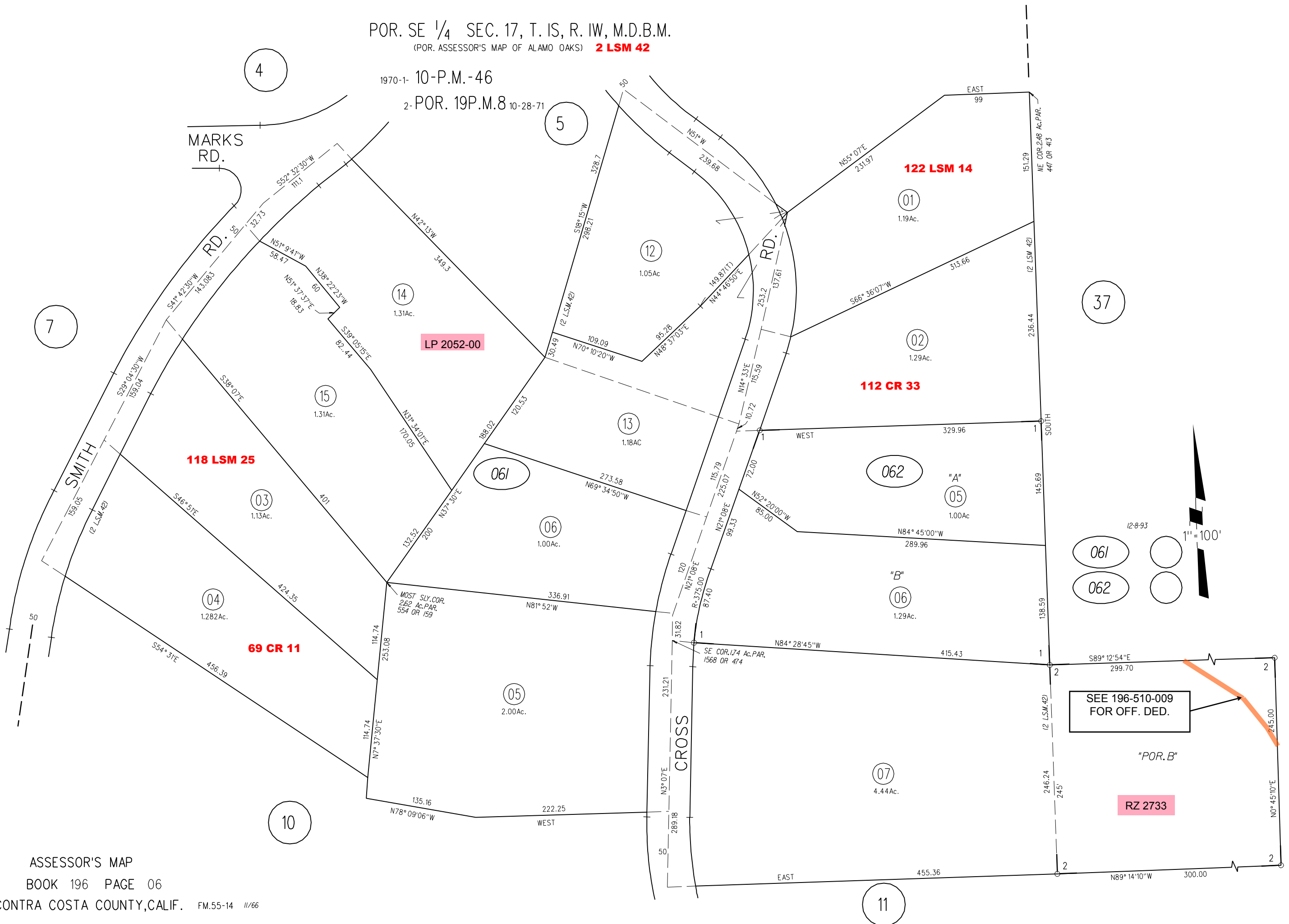


POR. SE 1/4 SEC. 17, T. 1S, R. 1W, M.D.B.M.
(POR. ASSESSOR'S MAP OF ALAMO OAKS) **2 LSM 42**

1970-1- 10-P.M.-46
2-POR. 19P.M.8 10-28-71



SEE 196-510-009
FOR OFF. DED.

RZ 2733

"POR. B"