

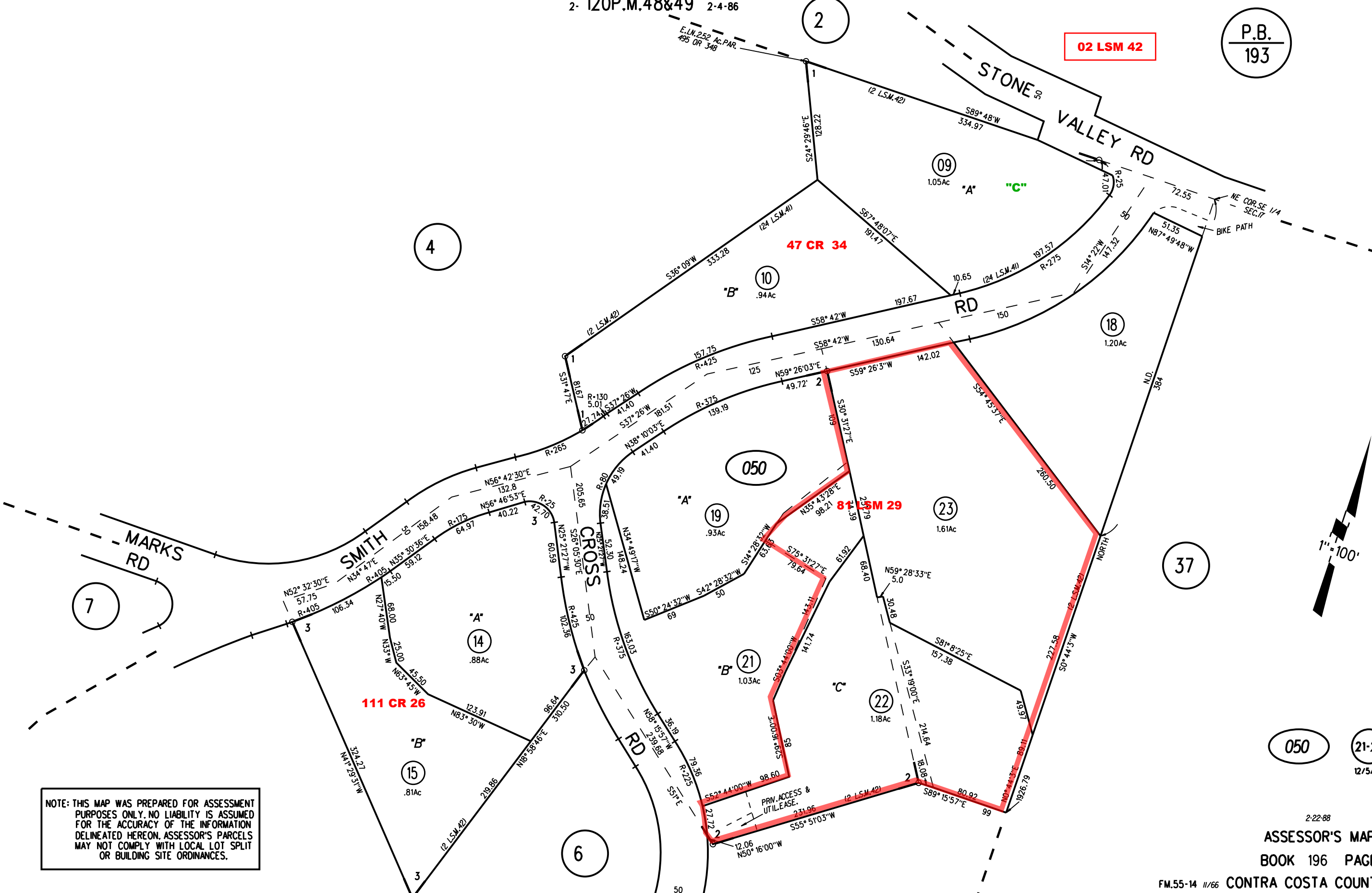
POR. SE 1/4 SEC. 17, T. 1S., R. 1W., M.D.B.M.

(POR. ASSESSOR'S MAP OF ALAMO OAKS)

1- 24L.S.M.41 11/27/63

2- 120P.M.48&49 2-4-86

3- 125P.M.30&31 12-22-86



P.B.
193

02 LSM 42

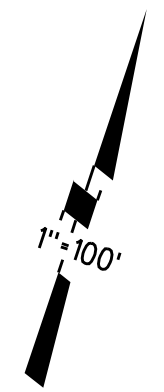
47 CR 34

050

81 LSM 29

111 CR 26

NOTE: THIS MAP WAS PREPARED FOR ASSESSMENT PURPOSES ONLY. NO LIABILITY IS ASSUMED FOR THE ACCURACY OF THE INFORMATION DELINEATED HEREON. ASSESSOR'S PARCELS MAY NOT COMPLY WITH LOCAL LOT SPLIT OR BUILDING SITE ORDINANCES.



050 21-23
12/5/23