

POR. SE 1/4 SEC. 17, T.1S., R.1W., M.D.B.M.

(POR. ASSESSOR'S MAP OF ALAMO OAKS) 2 LSM 42

1- 49L.S.M.32 9-19-67

4- 120P.M.37&38 1-30-86

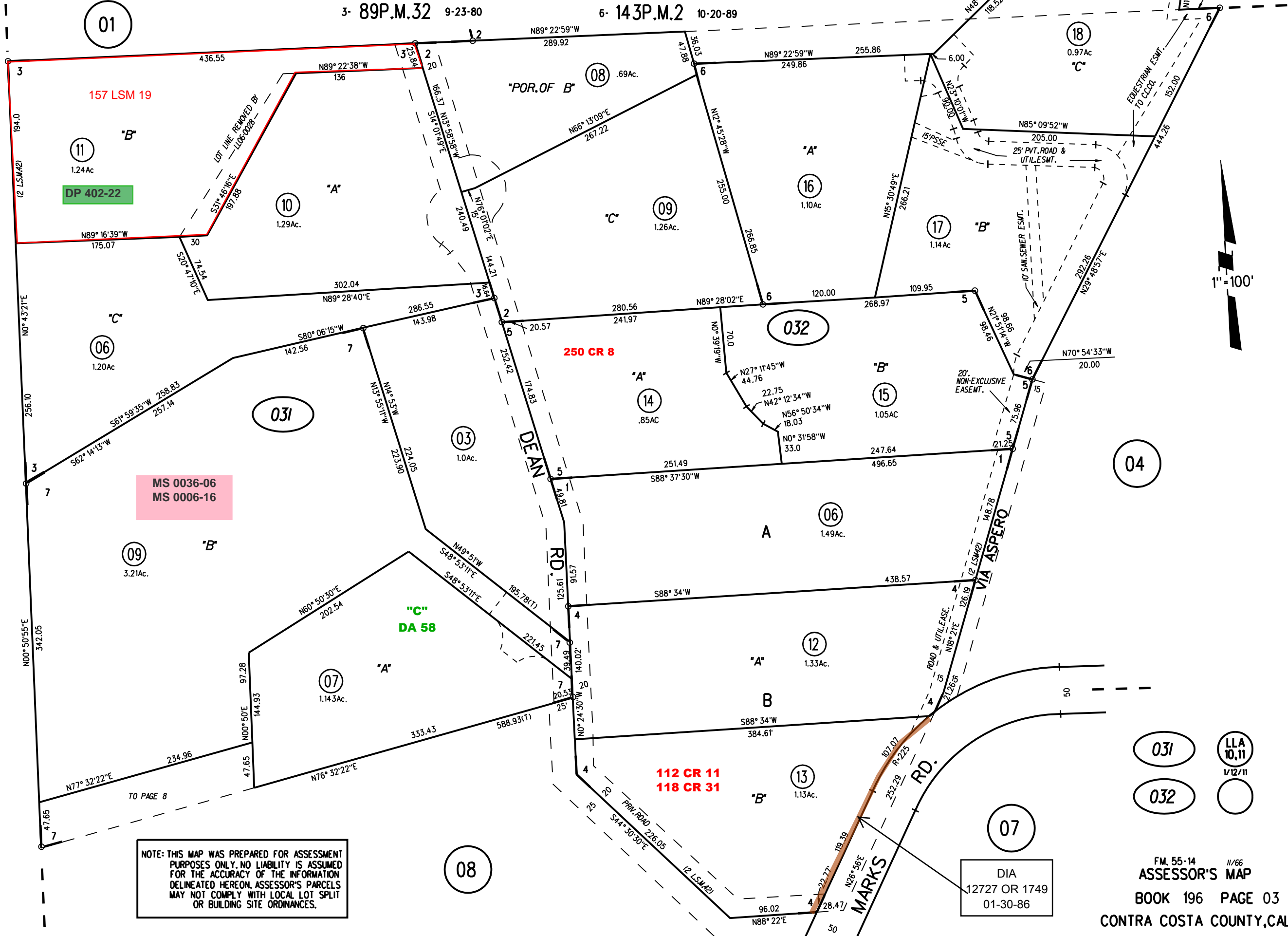
7- 179P.M.24 09-13-00

2- POR.60P.M.46 12-7-77

5- 127P.M.28 5-8-87

3- 89P.M.32 9-23-80

6- 143P.M.2 10-20-89



P.B.
197

NOTE: THIS MAP WAS PREPARED FOR ASSESSMENT PURPOSES ONLY. NO LIABILITY IS ASSUMED FOR THE ACCURACY OF THE INFORMATION DELINEATED HEREON. ASSESSOR'S PARCELS MAY NOT COMPLY WITH LOCAL LOT SPLIT OR BUILDING SITE ORDINANCES.

031
032
LLA 10.11
1/12/11

DIA
12727 OR 1749
01-30-86

FM. 55-14 11/66
ASSESSOR'S MAP
BOOK 196 PAGE 03
CONTRA COSTA COUNTY, CALIF.