



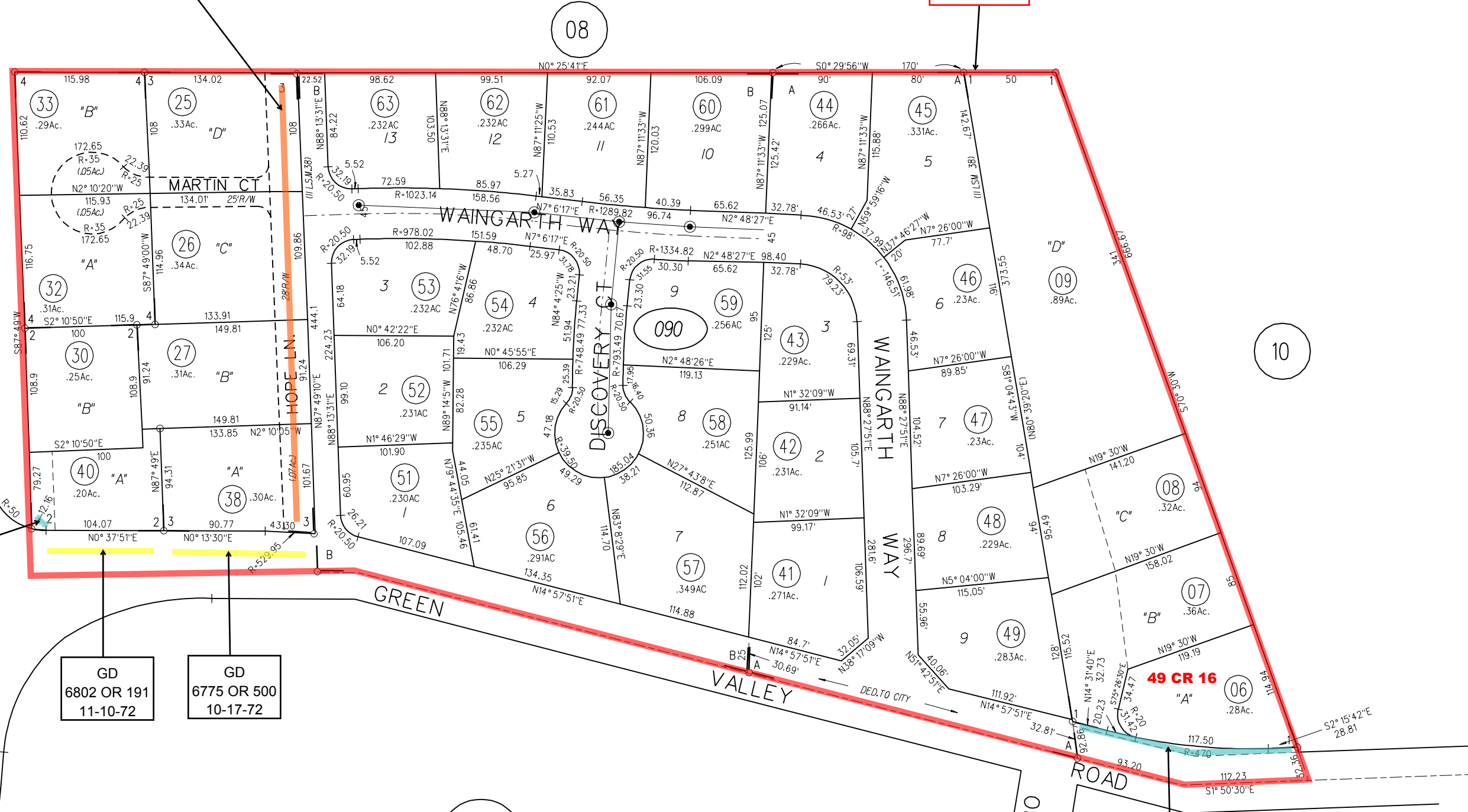
POR. S. 1/2 SEC. 16 T.1S. R.1W. M.B.D.M.

- 1- RECORD OF SURVEY 46 L.S.M.8 12-16-66
- 2- 26P.M.11 1-24-73
- 3- 28P.M.17 5-25-73
- 4- 33P.M.12 4-18-74

A-1990-ROLL- TRACT 7092 (FALCON GATE) M.B. 338-17  
 B-2000-ROLL- TRACT 8141 (THE CROSSINGS) M.B. 409-49

OFF. DED.  
 6879 OR 745  
 03-05-73

11 LSM 38



M.B.  
 194

8206 OR 272  
 02-16-77

GD  
 6802 OR 191  
 11-10-72

GD  
 6775 OR 500  
 10-17-72

M.B.  
 196

5291 OR 439  
 01-24-67

NOTE: THIS MAP WAS PREPARED FOR ASSESSMENT PURPOSES ONLY. NO LIABILITY IS ASSUMED FOR THE ACCURACY OF THE INFORMATION DELINEATED HEREON.

REVISED	CHANGE	BY
08-10-99	TRACT 8141	KR

R.J.C.'59 55-12  
 ASSESSOR'S MAP

BOOK 195 PAGE 09

AMS 8-10-99 CONTRA COSTA COUNTY, CALIF.