

N.W. 1/4 SEC. 15 & N.E. 1/4 SEC. 16 T.1S. R.1W. M.D.B.M.

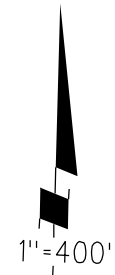
- 1- RECORD OF SURVEY 43 L.S.M. 13 6-10-66
 2- 81P.M.18 9-25-79
 3- 132P.M. 23-27 2-26-88
 4- 153 P.M. 13 7-3-91

Cert of corr
 95-134658
 8/16/1995

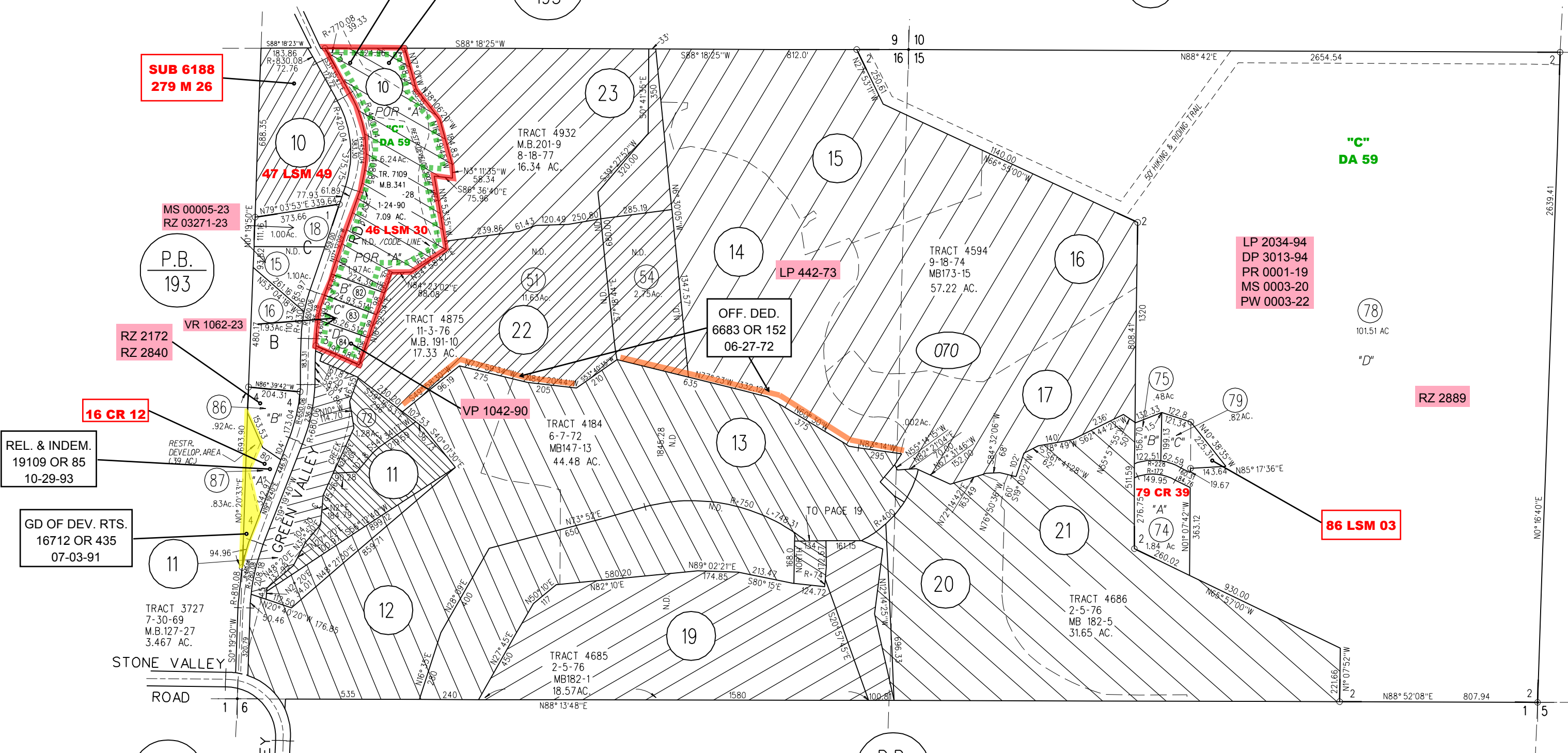
DRAIN. REL.
 12595 OR 902
 11-01-85

P.B.
 193

06



08



SUB 6188
 279 M 26

MS 00005-23
 RZ 03271-23

P.B.
 193

RZ 2172
 RZ 2840

VR 1062-23

16 CR 12

REL. & INDEM.
 19109 OR 85
 10-29-93

GD OF DEV. RTS.
 16712 OR 435
 07-03-91

196
 35

P.B.
 195

070

REVISED	CHANGE	BY
7-29-91	153 P.M. 13	JAC

LP 2034-94
 DP 3013-94
 PR 0001-19
 MS 0003-20
 PW 0003-22

RZ 2889

86 LSM 03

"C"
 DA 59

78
 101.51 AC
 "D"

79 CR 39