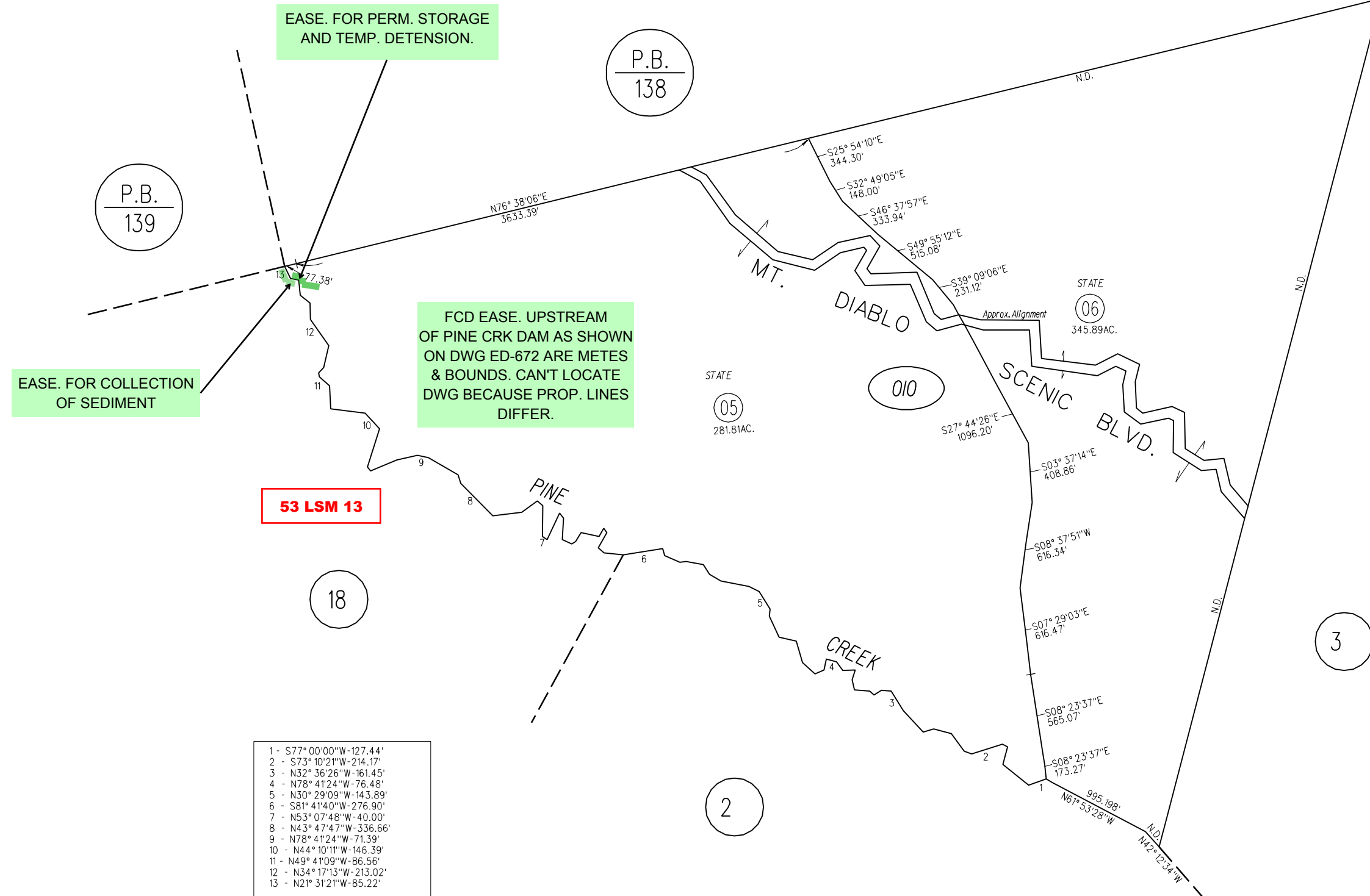


RO. SAN MIGUEL  
(ROBERT ALLEN TRACT)



P.B.  
139

P.B.  
138

53 LSM 13

18

2

3

010

- 1 - S77° 00' 00" W - 127.44'
- 2 - S73° 10' 21" W - 214.17'
- 3 - N32° 36' 26" W - 161.45'
- 4 - N78° 41' 24" W - 76.48'
- 5 - N30° 29' 09" W - 143.89'
- 6 - S81° 41' 40" W - 276.90'
- 7 - N53° 07' 48" W - 40.00'
- 8 - N43° 47' 47" W - 336.66'
- 9 - N78° 41' 24" W - 71.39'
- 10 - N44° 10' 11" W - 146.39'
- 11 - N49° 41' 09" W - 86.56'
- 12 - N34° 17' 13" W - 213.02'
- 13 - N21° 31' 21" W - 85.22'