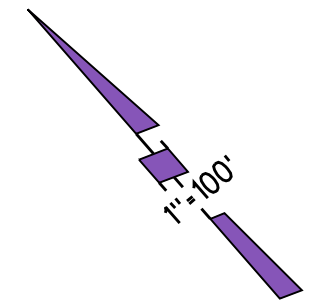
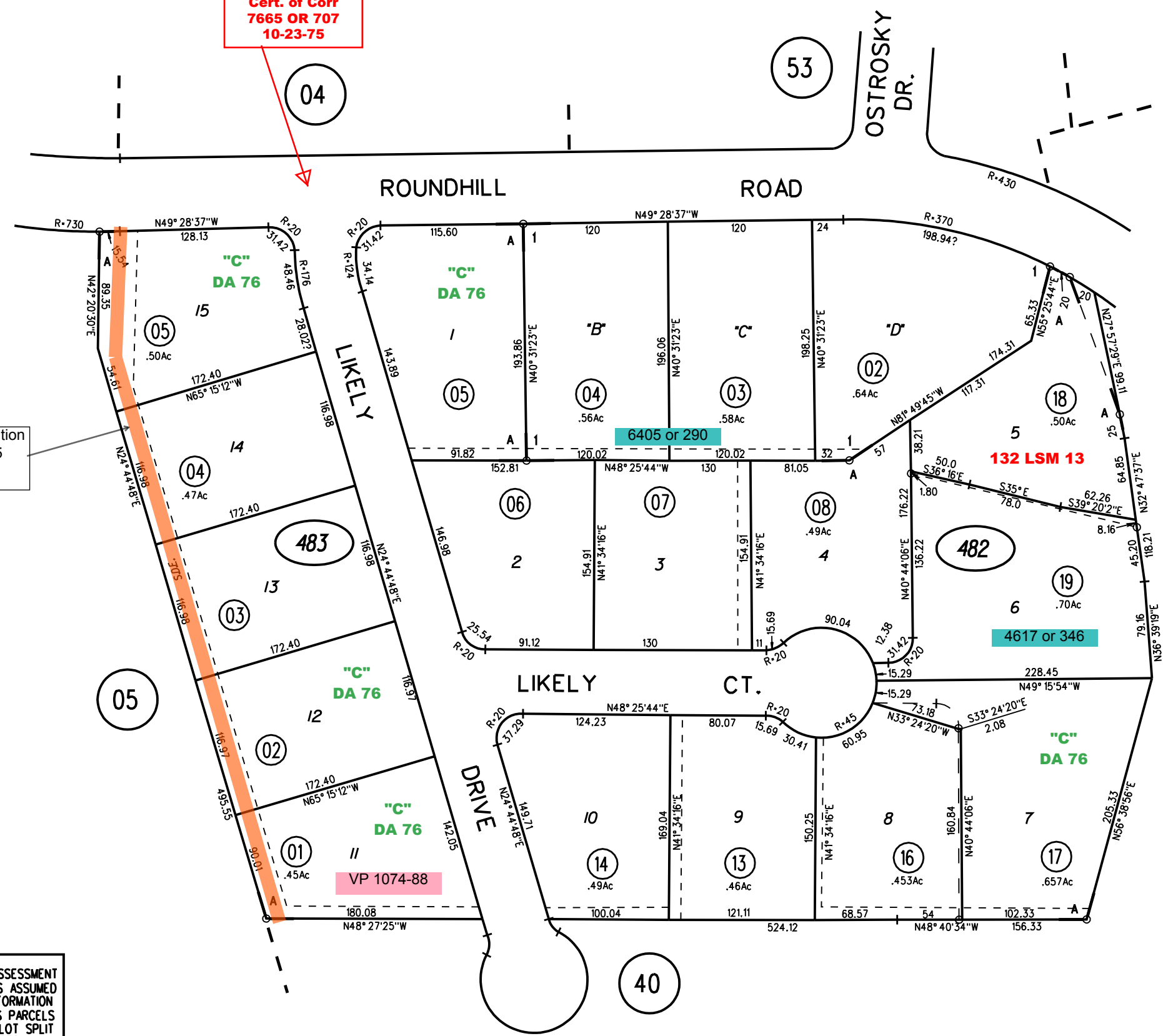


ROAD ACCEPTANCE
ROUNDHILL RD
6311 OR 17
6371 OR 12
4-30-71

Cert. of Corr
7665 OR 707
10-23-75



Offer of Dedication
6710 or 295
7-28-72



NOTE: THIS MAP WAS PREPARED FOR ASSESSMENT PURPOSES ONLY. NO LIABILITY IS ASSUMED FOR THE ACCURACY OF THE INFORMATION DELINEATED HEREON. ASSESSOR'S PARCELS MAY NOT COMPLY WITH LOCAL LOT SPLIT OR BUILDING SITE ORDINANCES.

