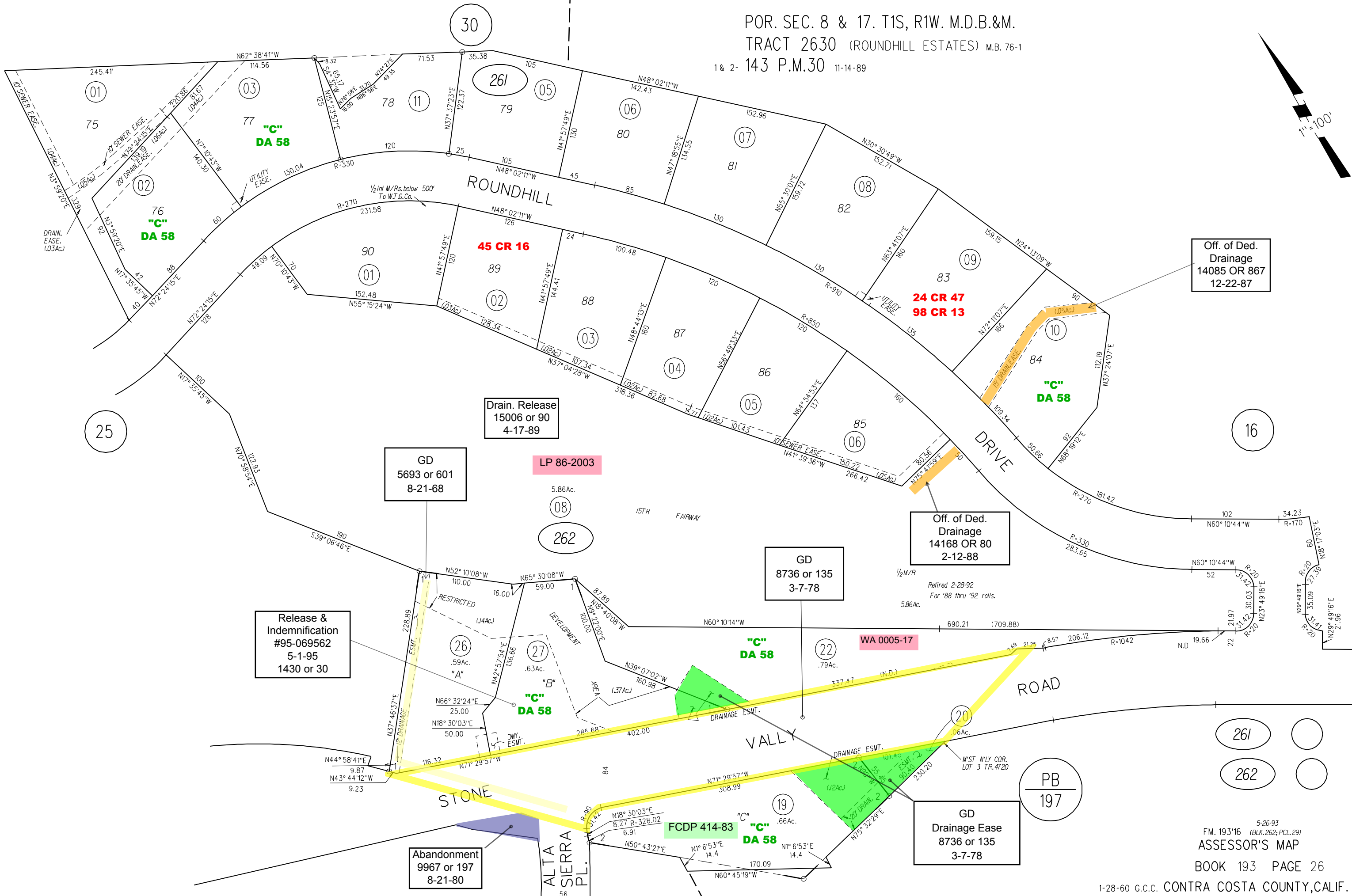


POR. SEC. 8 & 17. T1S, R1W. M.D.B.&M.

TRACT 2630 (ROUNDHILL ESTATES) M.B. 76-1

1 & 2- 143 P.M.30 11-14-89

1"=100'



Off. of Ded. Drainage 14085 OR 867 12-22-87

24 CR 47 98 CR 13

Drain. Release 15006 or 90 4-17-89

GD 5693 or 601 8-21-68

LP 86-2003

Off. of Ded. Drainage 14168 OR 80 2-12-88

GD 8736 or 135 3-7-78

Release & Indemnification #95-069562 5-1-95 1430 or 30

WA 0005-17

Abandonment 9967 or 197 8-21-80

GD Drainage Ease 8736 or 135 3-7-78

ASSASSOR'S MAP

BOOK 193 PAGE 26

1-28-60 G.C.C. CONTRA COSTA COUNTY, CALIF.