

POR SEC 5, 8 & 9 T1S R1W MDBM

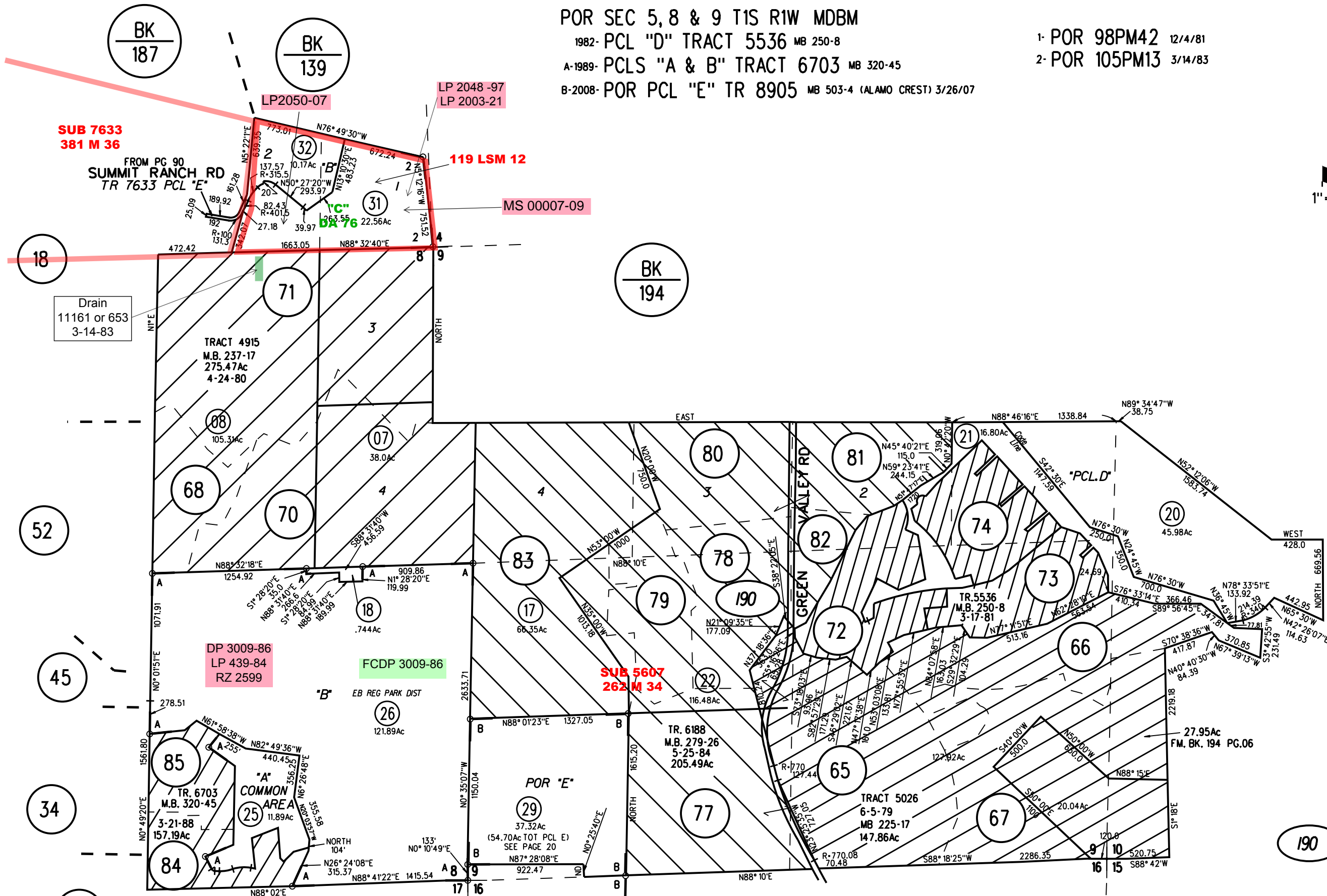
1982- PCL "D" TRACT 5536 MB 250-8

A-1989- PCLS "A & B" TRACT 6703 MB 320-45

B-2008- POR PCL "E" TR 8905 MB 503-4 (ALAMO CREST) 3/26/07

1- POR 98PM42 12/4/81

2- POR 105PM13 3/14/83



SUB 7633
381 M 36

LP 2048 -97
LP 2003-21

119 LSM 12

MS 00007-09

Drain
11161 or 653
3-14-83

TRACT 4915
M.B. 237-17
275.47Ac
4-24-80

08
105.31Ac

07
38.0Ac

68

70

83

78

79

190

72

73

66

45

DP 3009-86
LP 439-84
RZ 2599

FCDP 3009-86

SUB 5607
262 M 34

'B' EB REG PARK DIST

26
121.89Ac

22
116.48Ac

TR. 6188
M.B. 279-26
5-25-84
205.49Ac

65

TRACT 5026
6-5-79
MB 225-17
147.86Ac

67

27.95Ac
FM. BK. 194 PG.06

34

85

25
11.89Ac

84

POR 'E'
29
37.32Ac
(54.70Ac TOT PCL E)
SEE PAGE 20

77

33

21

NOTE: THIS MAP WAS PREPARED FOR ASSESSMENT PURPOSES ONLY. NO LIABILITY IS ASSUMED FOR THE ACCURACY OF THE INFORMATION DELINEATED HEREON. ASSESSOR'S PARCELS MAY NOT COMPLY WITH LOCAL LOT SPLIT OR BUILDING SITE ORDINANCES.

20

BK
194

