

POR SEC 5 & 8 T1S R1W MDBM

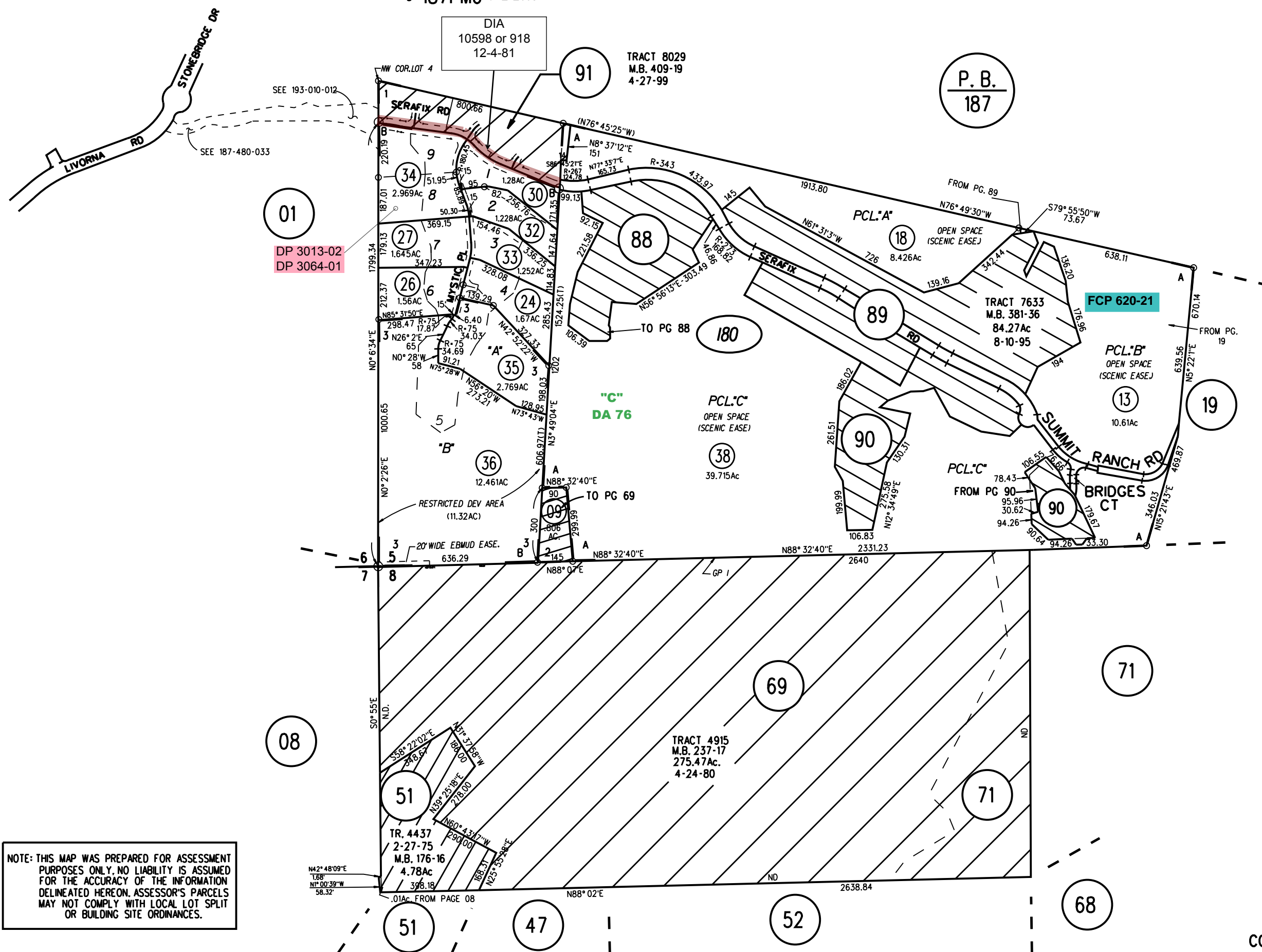
~~POR 98PM42 12/4/1981~~

A- POR TRACT 7633 MB 381-36 (STONEBRIDGE ESTATES) 8/10/1995

2- POR 105PM13 3/14/1983

B- TRACT 8262 MB 421-18 7/6/2000

3- 187PM6 6/12/2003



NOTE: THIS MAP WAS PREPARED FOR ASSESSMENT PURPOSES ONLY. NO LIABILITY IS ASSUMED FOR THE ACCURACY OF THE INFORMATION DELINEATED HEREON. ASSESSOR'S PARCELS MAY NOT COMPLY WITH LOCAL LOT SPLIT OR BUILDING SITE ORDINANCES.