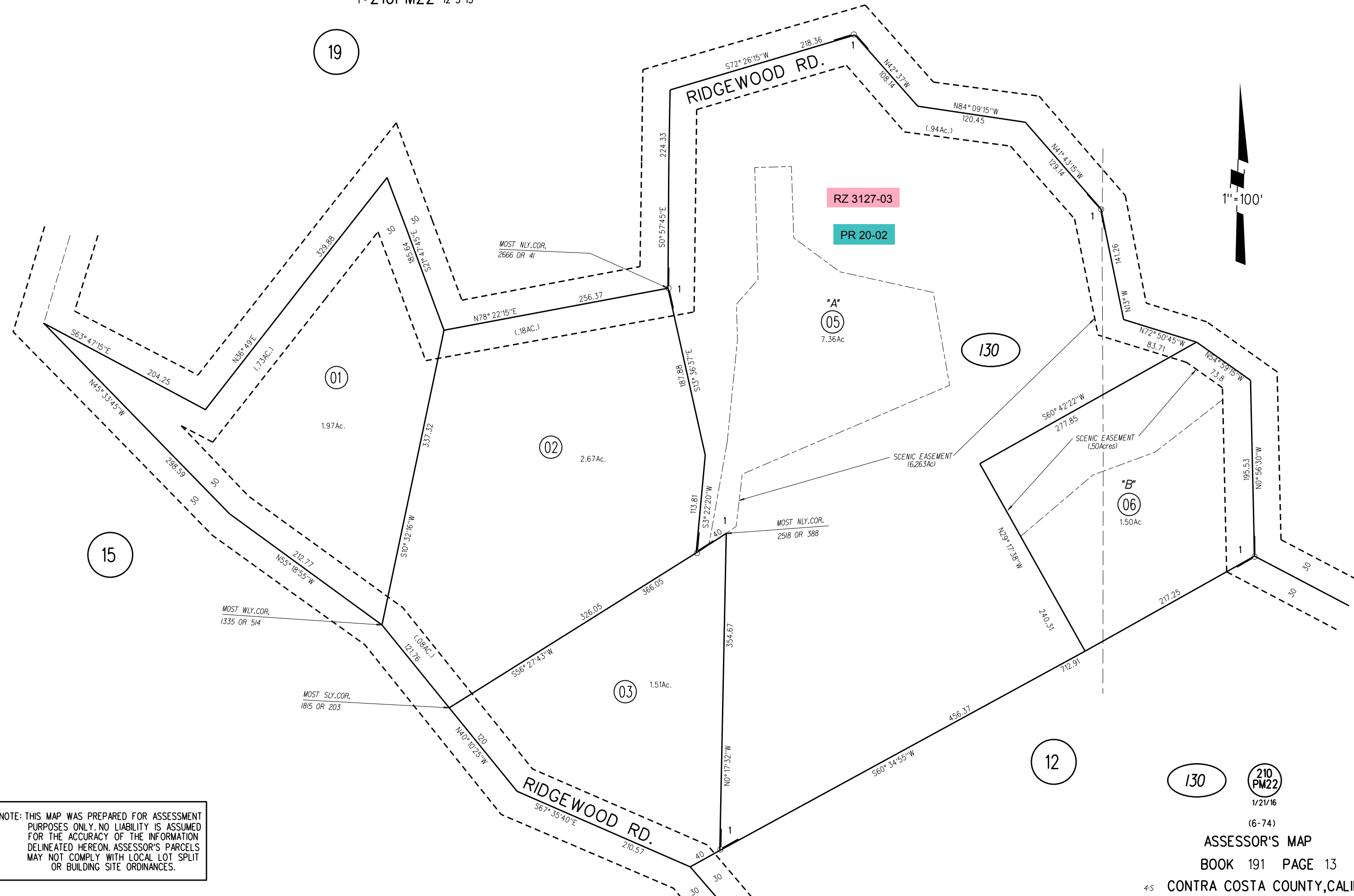
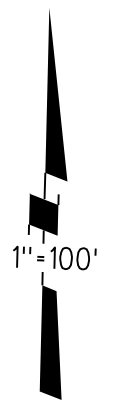


POR. SE 1/4 SEC. 11 - POR. SW 1/4 SEC. 12 T1S R2W MDBM

1 - 210PM22 12-3-15

12 LSM 7

19



RZ 3127-03

PR 20-02

15

130

NOTE: THIS MAP WAS PREPARED FOR ASSESSMENT PURPOSES ONLY. NO LIABILITY IS ASSUMED FOR THE ACCURACY OF THE INFORMATION DELINEATED HEREON. ASSESSOR'S PARCELS MAY NOT COMPLY WITH LOCAL LOT SPLIT OR BUILDING SITE ORDINANCES.

130

210 PM22 1/21/16

(6-74)

ASSESSOR'S MAP

BOOK 191 PAGE 13

45 CONTRA COSTA COUNTY, CALIF.