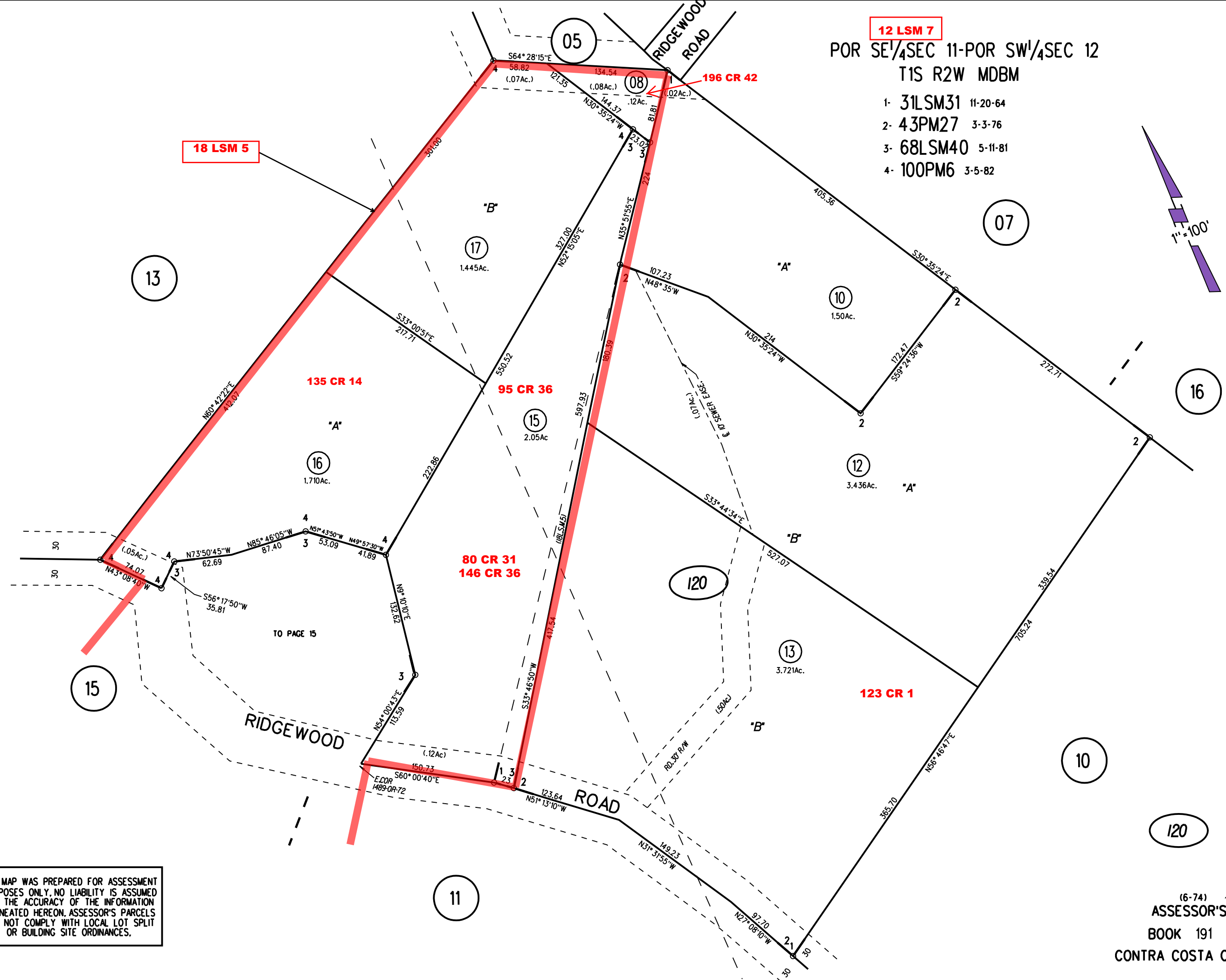
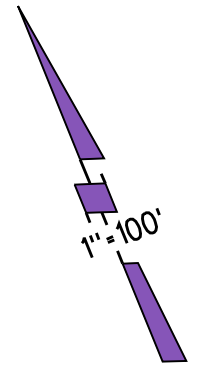


**12 LSM 7**  
 POR SE<sup>1</sup>/<sub>4</sub>SEC 11-POR SW<sup>1</sup>/<sub>4</sub>SEC 12  
 T1S R2W MDBM

- 1- 31LSM31 11-20-64
- 2- 43PM27 3-3-76
- 3- 68LSM40 5-11-81
- 4- 100PM6 3-5-82



NOTE: THIS MAP WAS PREPARED FOR ASSESSMENT PURPOSES ONLY. NO LIABILITY IS ASSUMED FOR THE ACCURACY OF THE INFORMATION DELINEATED HEREON. ASSESSOR'S PARCELS MAY NOT COMPLY WITH LOCAL LOT SPLIT OR BUILDING SITE ORDINANCES.

120  
 4/23/06