

1990 ROLL - TRACT 7002 M.B.332-1
CC&R'S 14985/566 4-6-89 "MUTUAL 55"
CONDO.

TO BK 190-355S-2

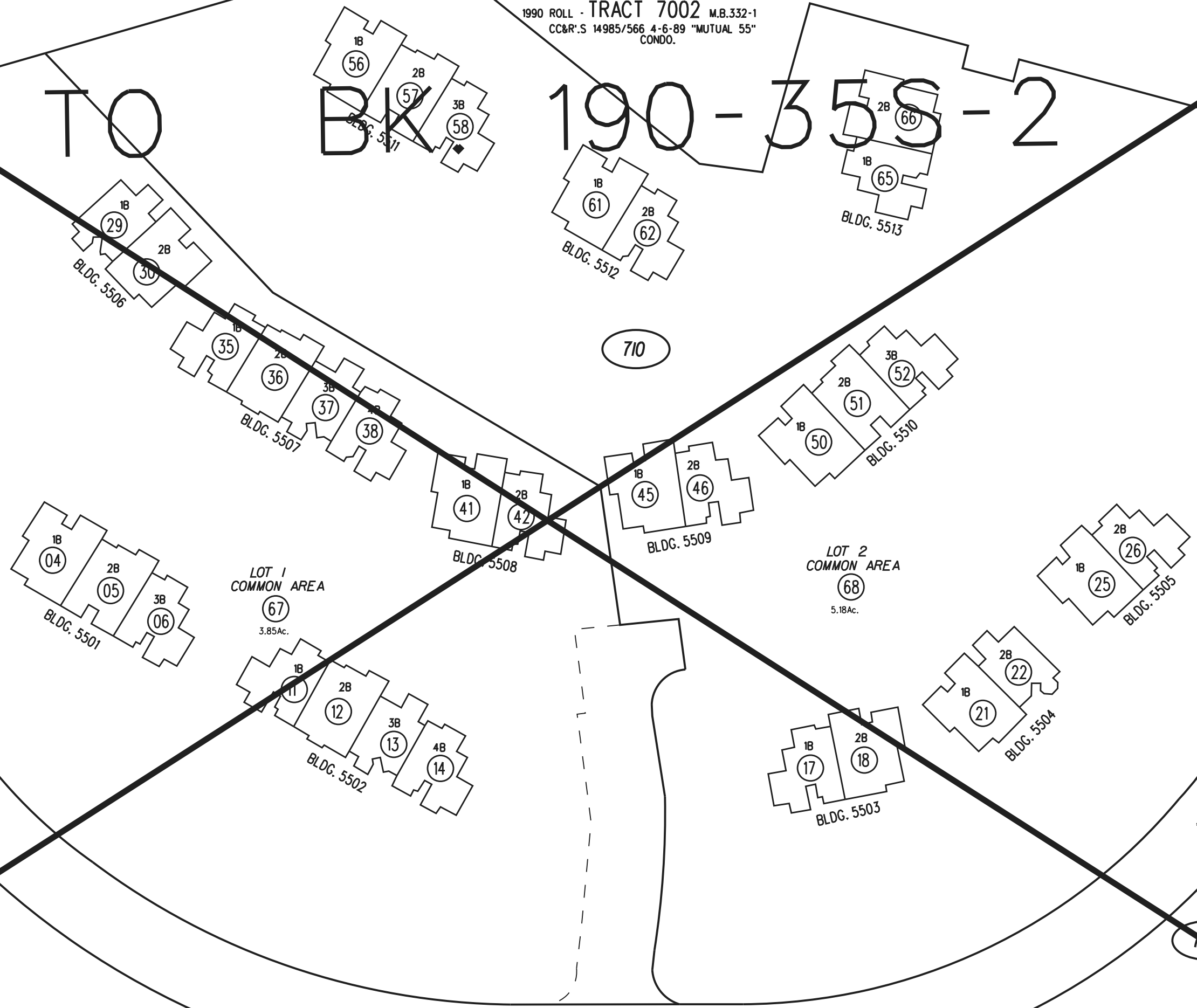
1"=60'

TERRA

DRIVE

GRANADA

SECOND LEVEL



FM. 189-12 5-10-89
ASSESSOR'S MAP

Sanborn Date : 11/06/1999 BOOK 189 PAGE 71 S-2

CONTRA COSTA COUNTY, CALIF.