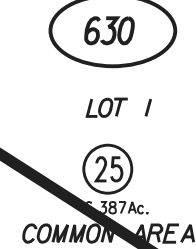
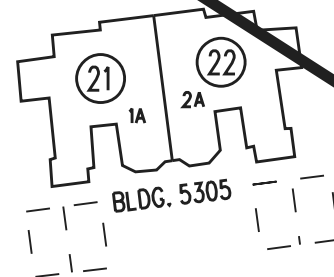
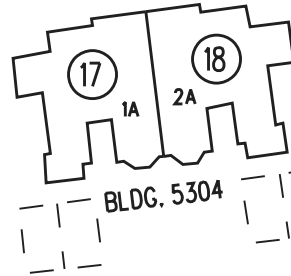
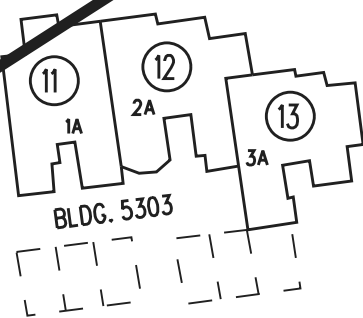
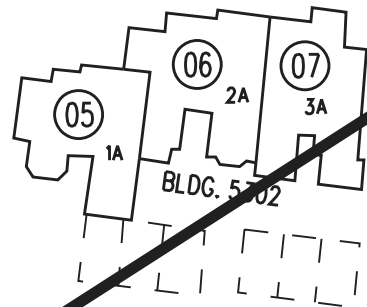
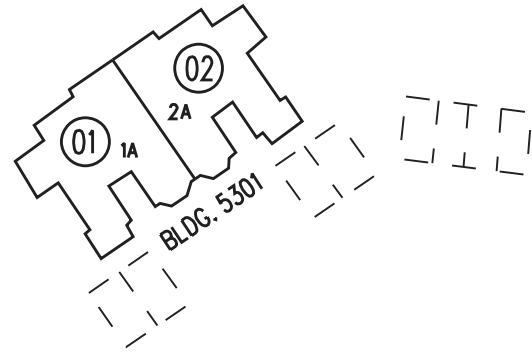


TO BK. 190-29S-1

1"=60'

ALL ENTITIES, UNLESS OTHERWISE SPECIFIED ARE UNIDENTIFIED.
??? STANDS FOR RASTER NOT CLEAR.



35

23

61

62

12

630

64

630

65

N32° 05'E
210'

N47° 10'W
29.80'

N42° 26'
73.94'

N28° 15'W
248.27'

N5° 21'E
331.49'

R=17
15'-60"

R=17
15'-60"

R=328
197.50'

553.48
N79° 45'W

N45° 15'W

N45° 15'W

FIRST LEVEL

FM. 189-12 2-11-87
ASSESSOR'S MAP

BOOK 189 PAGE 63S-1

Sanborn Date : 11/06/1999

CONTRA COSTA COUNTY, CALIF.