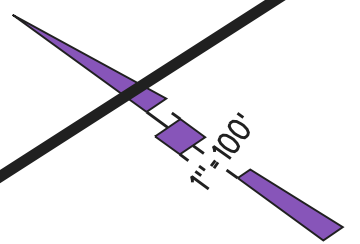


TO

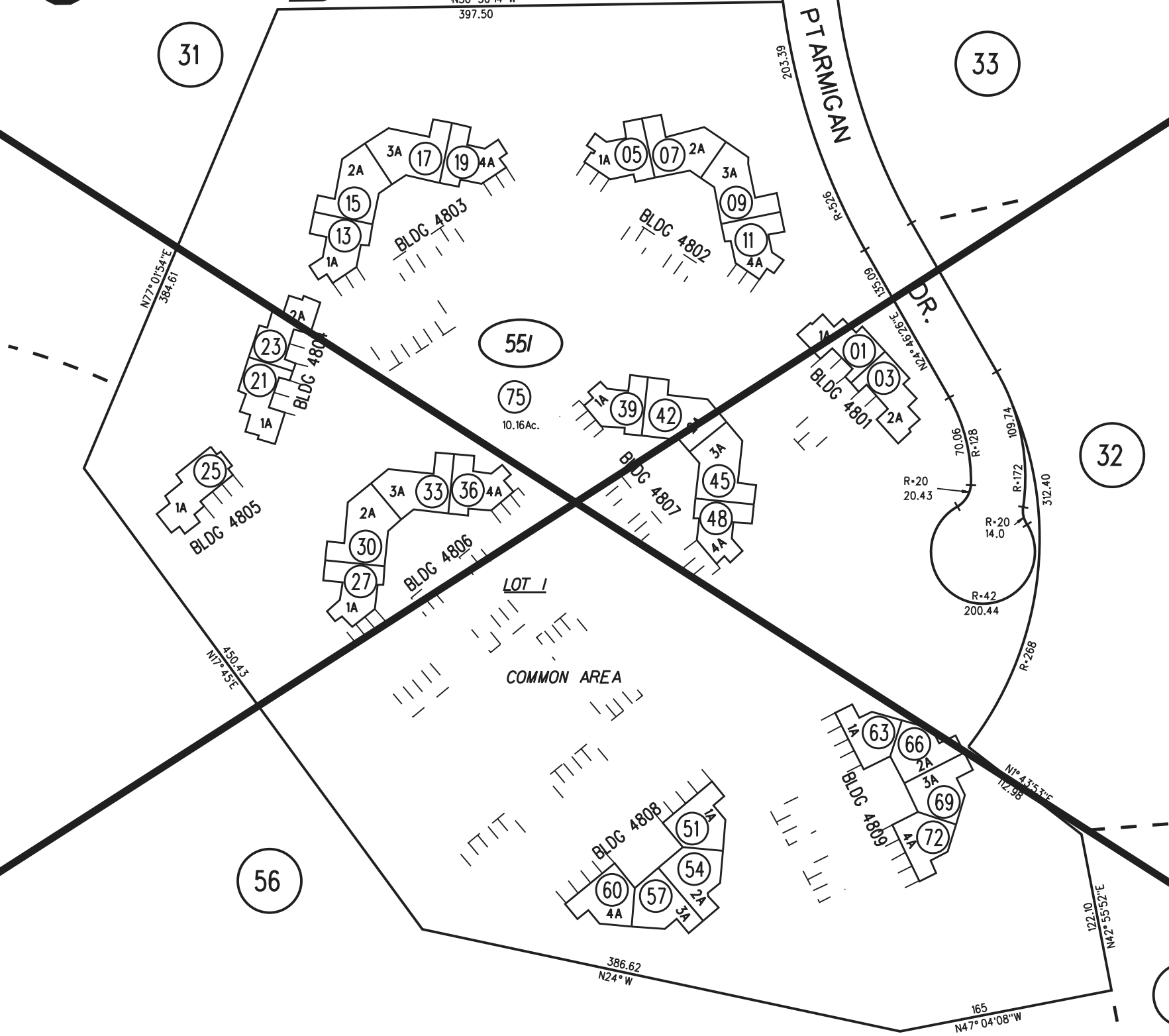
1979 ROLL TRACT 5218

MUT. 48 (CONDO) MB 220-9
CC&BS 9667212 11-26-79
AMD. C.C.B.R.'S 10/70/4415-5-82

BK. 190-24S-1



31 33



NOTE
FOR M/R SEE PAGE 12.

32

56

12

FIRST LEVEL

551

3-29-75 FM 189-12
ASSESSOR'S MAP