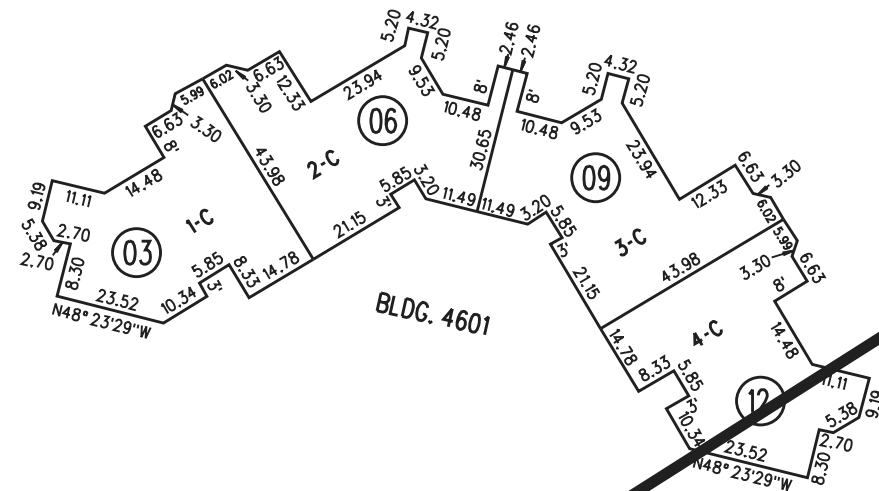


26

1978 ROLL TRACT 4928 MUTUAL 46 (CONDOMINIUM) MB-195-7

TO BK. 190-20S-3



NOTE FOR M/R SEE PAGE 12.

1"=40'

500

LOT 1
1.81Ac.

12

23

THIRD LEVEL

AVENIDA

SEVILLA

TERRA GRANADA DR.

500

8-4-77 FM 189-12

ASSESSOR'S MAP

Sanborn Date : 11/06/1999

BOOK 189 PAGES 30S-3

CONTRA COSTA COUNTY, CALIF.