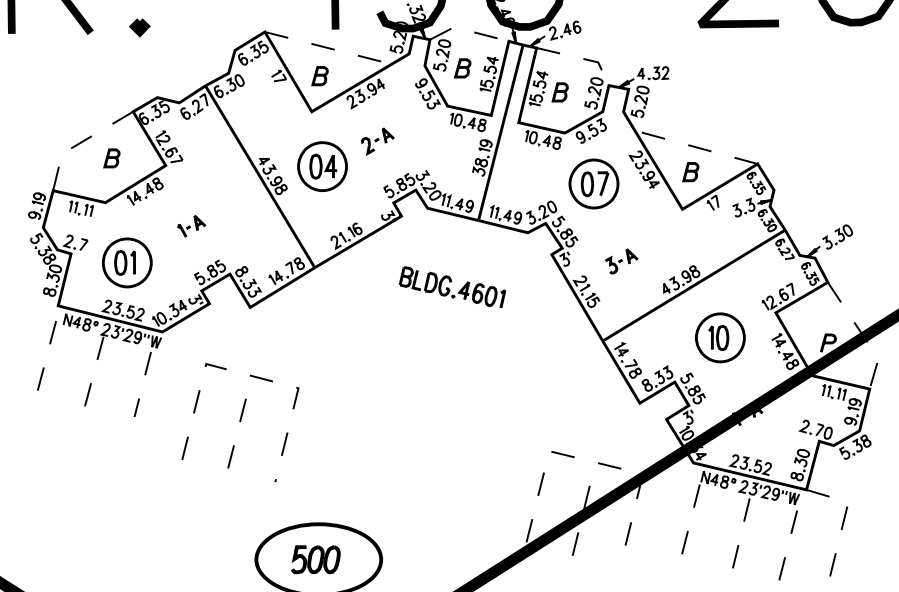
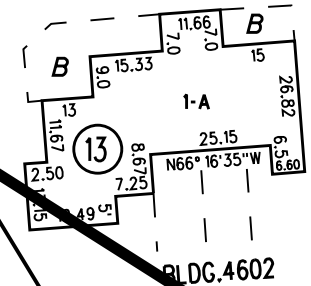
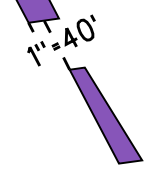


26

1978 ROLL TRACT 4928 MUTUAL 46 (CONDOMINIUM) MB 195-7  
CC&Rs 08400/127 7/1/77  
AMENDED CC&Rs 16023/670 2/10/16

TO BK. 190-20S-1



12

23

500

500

FIRST LEVEL

NOTE: THIS MAP WAS PREPARED FOR ASSESSMENT PURPOSES ONLY. NO LIABILITY IS ASSUMED FOR THE ACCURACY OF THE INFORMATION DELINEATED HEREON. ASSESSOR'S PARCELS MAY NOT COMPLY WITH LOCAL LOT SPLIT OR BUILDING SITE ORDINANCES.

TERRA GRANADA DR.

AVENIDA

SEVILLA

8-4-77 FM 189-12  
ASSESSOR'S MAP  
BOOK 189 PAGE 50S-1  
CONTRA COSTA COUNTY, CALIF.

Sanborn Date : 11/06/1999