

TO BK. 1900-17S-1

TERRA CAL. DR.

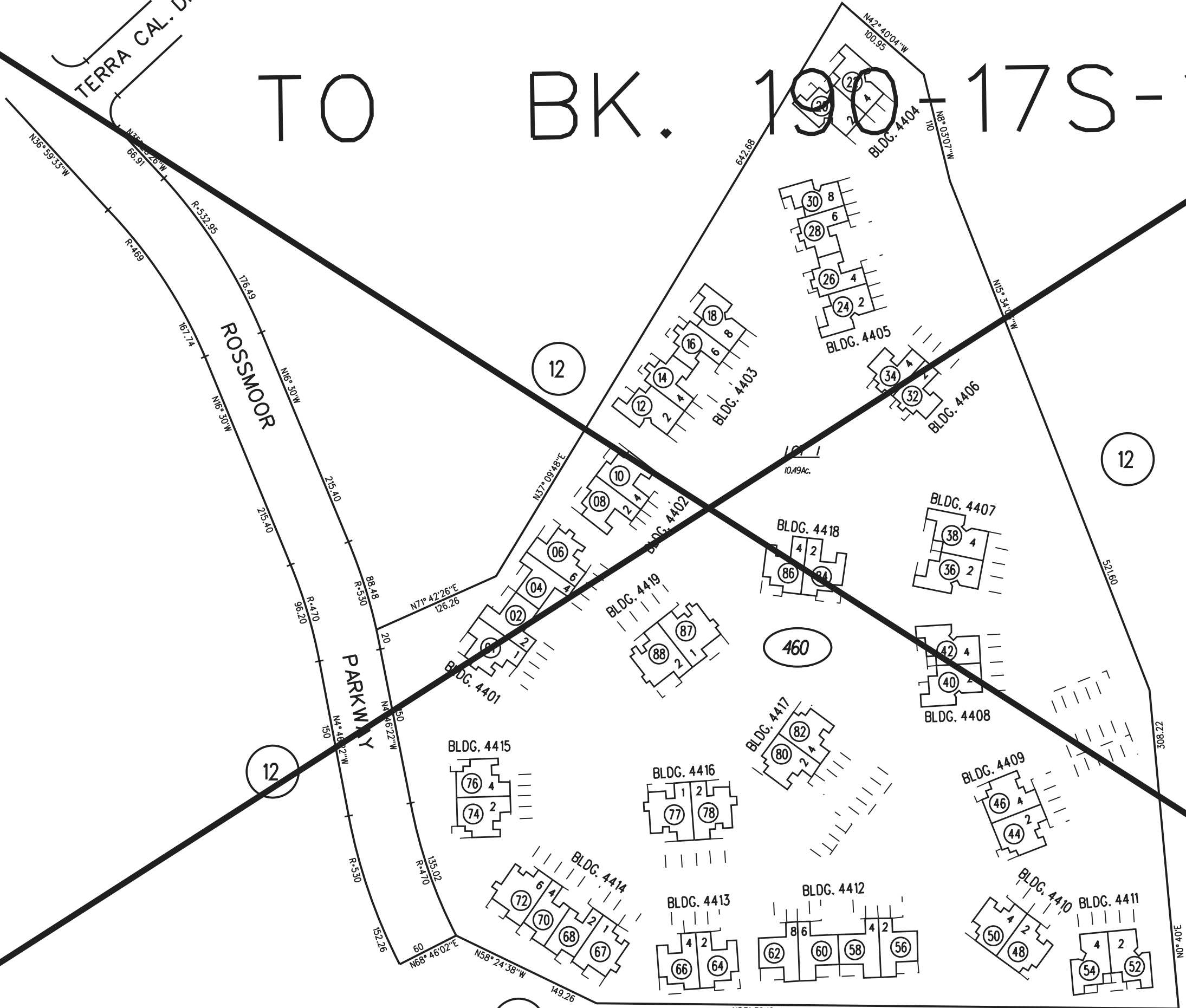
ROSSMOOR

PARKWAY



1" = 100'

NOTE
FOR M/R SEE PAGE 12



FIRST LEVEL

460

Survey Date : 31/05/1999

5-25-76 FM 189-12

ASSESSOR'S MAP

BOOK 189 PAGE 46S-1

CONTRA COSTA COUNTY, CALIF.