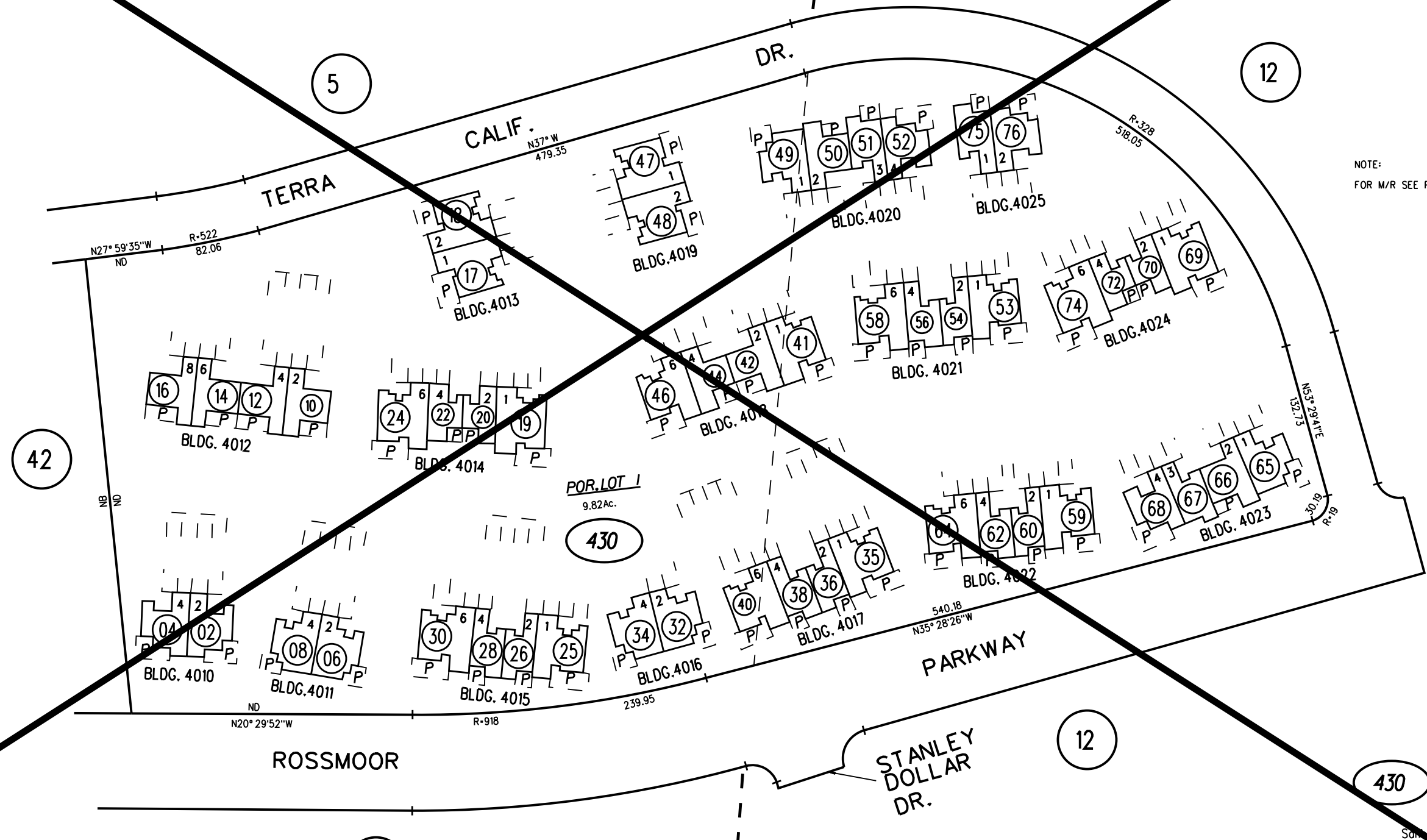
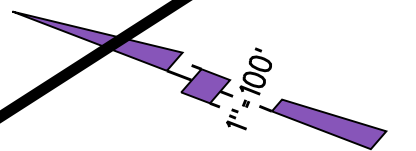


TO BK. 186-23S-1



NOTE:
FOR M/R SEE PAGE 5, 12.

ALL ENTITIES, UNLESS OTHERWISE SPECIFIED ARE UNIDENTIFIED.
?? STANDS FOR RASTER NOT CLEAR.

FIRST LEVEL

430

Survey Date : 11/06/1999
10-25-74 FM 189-5,12
ASSESSOR'S MAP

BOOK 189 PAGE 43S-1
CONTRA COSTA COUNTY, CALIF.