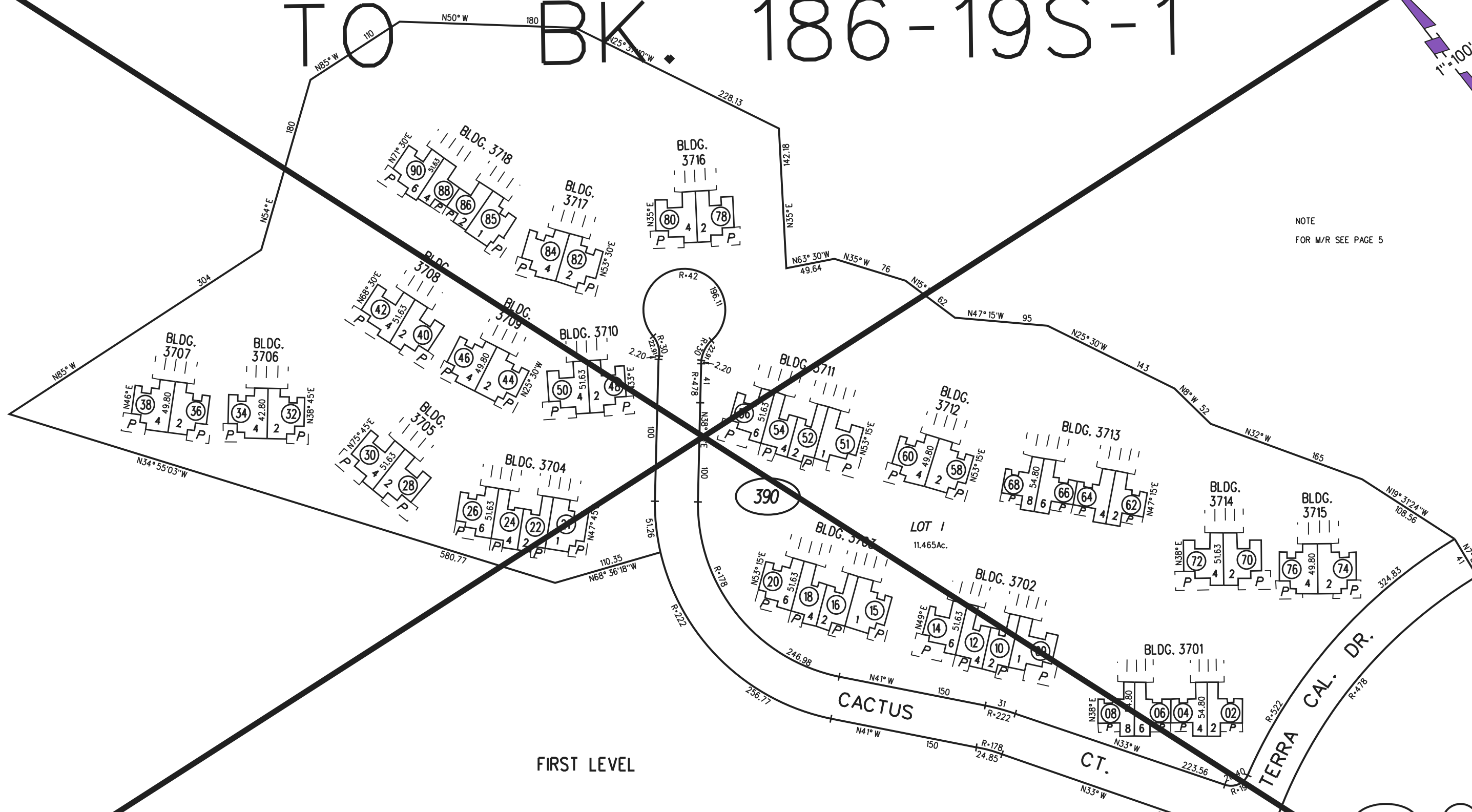


TO BK. 186-19S-1

1" = 100'

NOTE
FOR M/R SEE PAGE 5



FIRST LEVEL

390

Sanborn Date : 11/06/1999

1-10-74 FM 189-5
ASSESSOR'S MAP

BOOK 189 PAGE 39S-1
CONTRA COSTA COUNTY, CALIF.