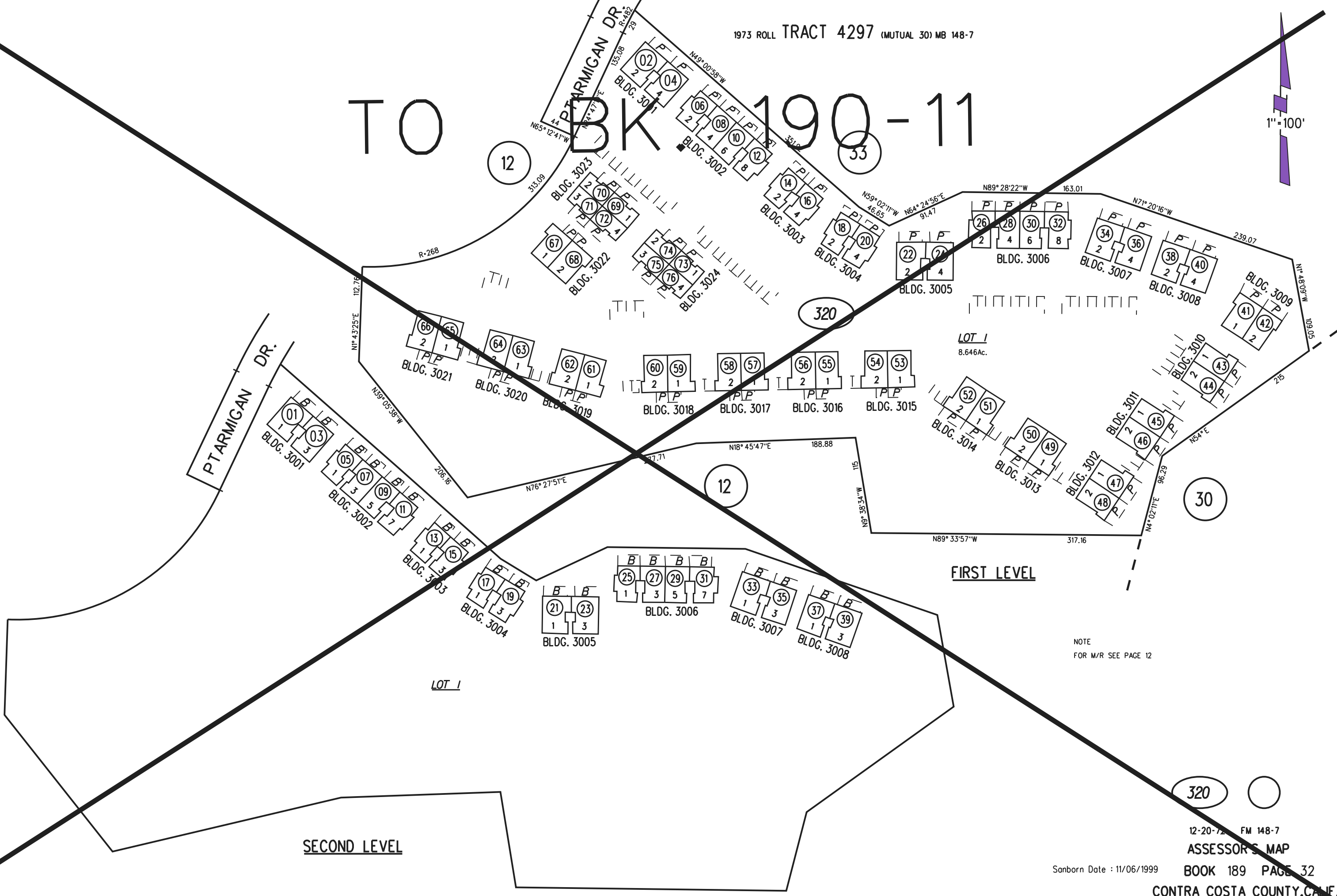
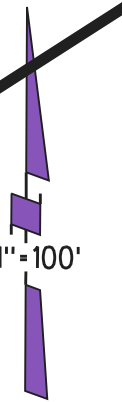


TO BK 190-11

1"=100'



12

33

320

12

30

FIRST LEVEL

SECOND LEVEL

NOTE FOR M/R SEE PAGE 12

320



12-20-72 FM 148-7

ASSESSOR'S MAP

Sanborn Date : 11/06/1999

BOOK 189 PAGE 32

CONTRA COSTA COUNTY, CALIF.