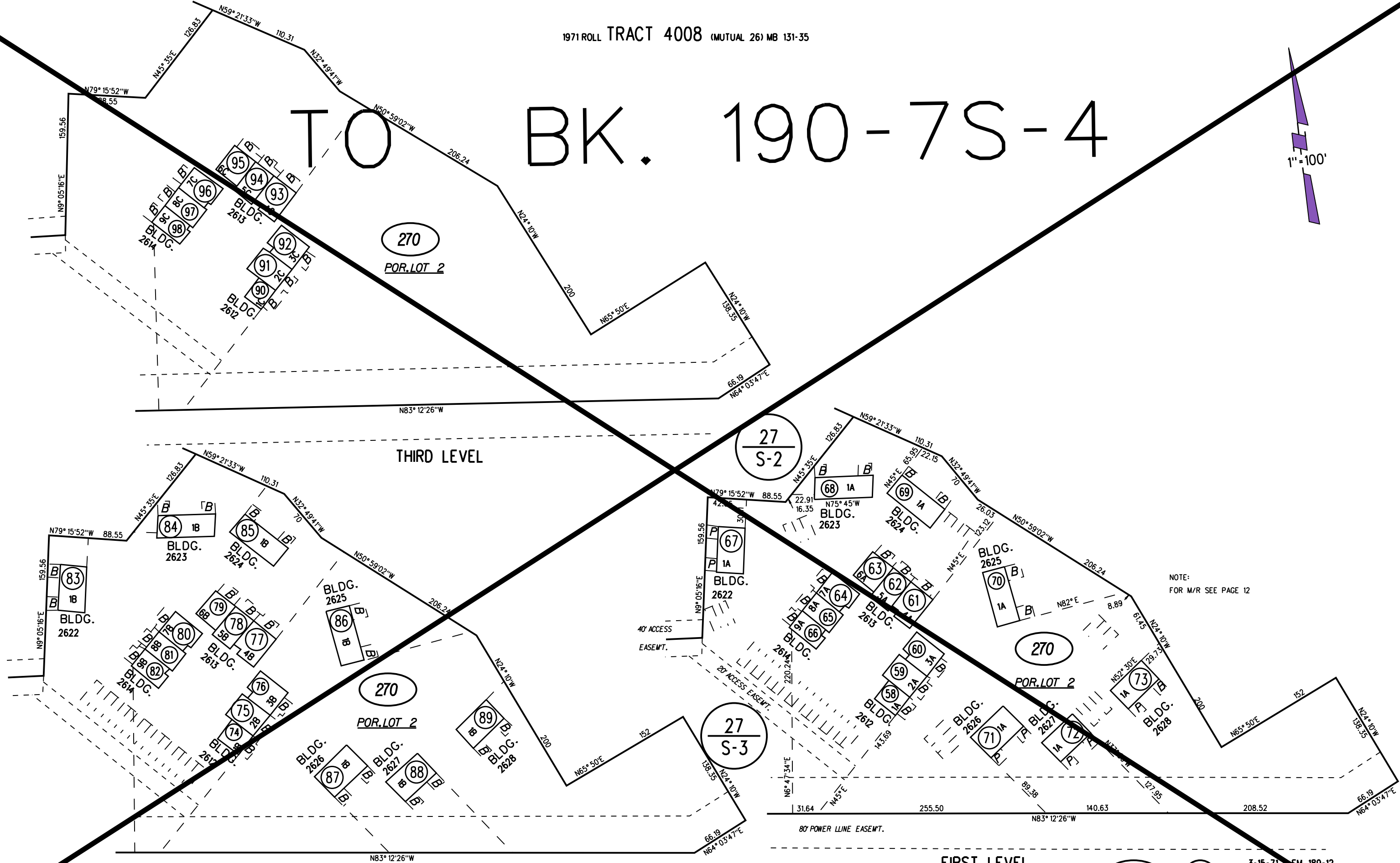


# TO BK. 190-7S-4

1" = 100'



NOTE:  
FOR M/R SEE PAGE 12

SECOND LEVEL

FIRST LEVEL

270

○

3-15-71 FM 189-12

ASSESSOR'S MAP

BOOK 189 PAGE 27S-4

CONTRA COSTA COUNTY, CALIF.

Sanborn Date : 11/06/1999