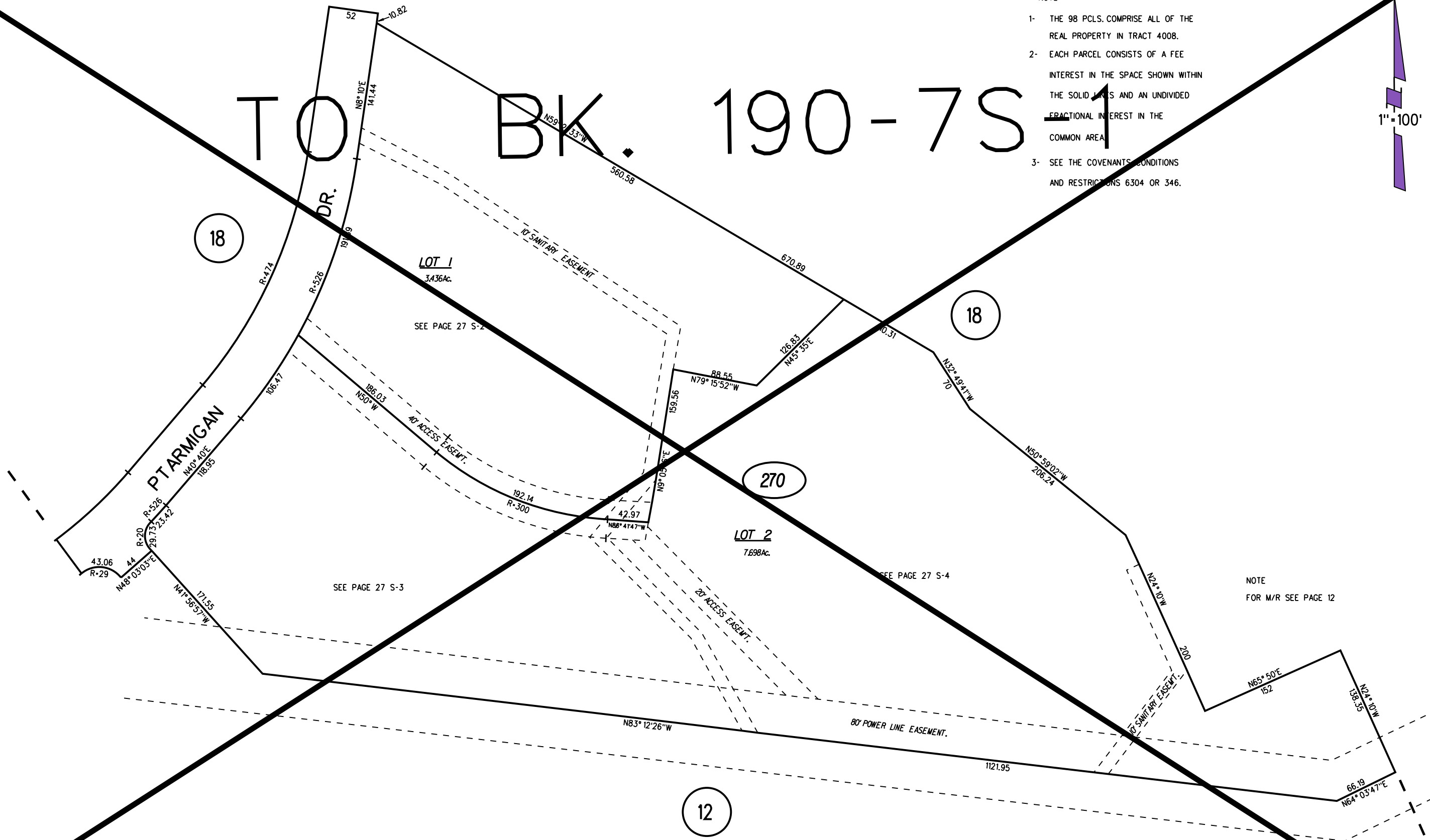


# TO BK. 190-7S-1

NOTE

- 1- THE 98 PCLS. COMPRISE ALL OF THE REAL PROPERTY IN TRACT 4008.
- 2- EACH PARCEL CONSISTS OF A FEE INTEREST IN THE SPACE SHOWN WITHIN THE SOLID LINES AND AN UNDIVIDED FRACTIONAL INTEREST IN THE COMMON AREA.
- 3- SEE THE COVENANTS, CONDITIONS AND RESTRICTIONS 6304 OR 346.

1" = 100'



18

18

270

12

270

NOTE FOR M/R SEE PAGE 12