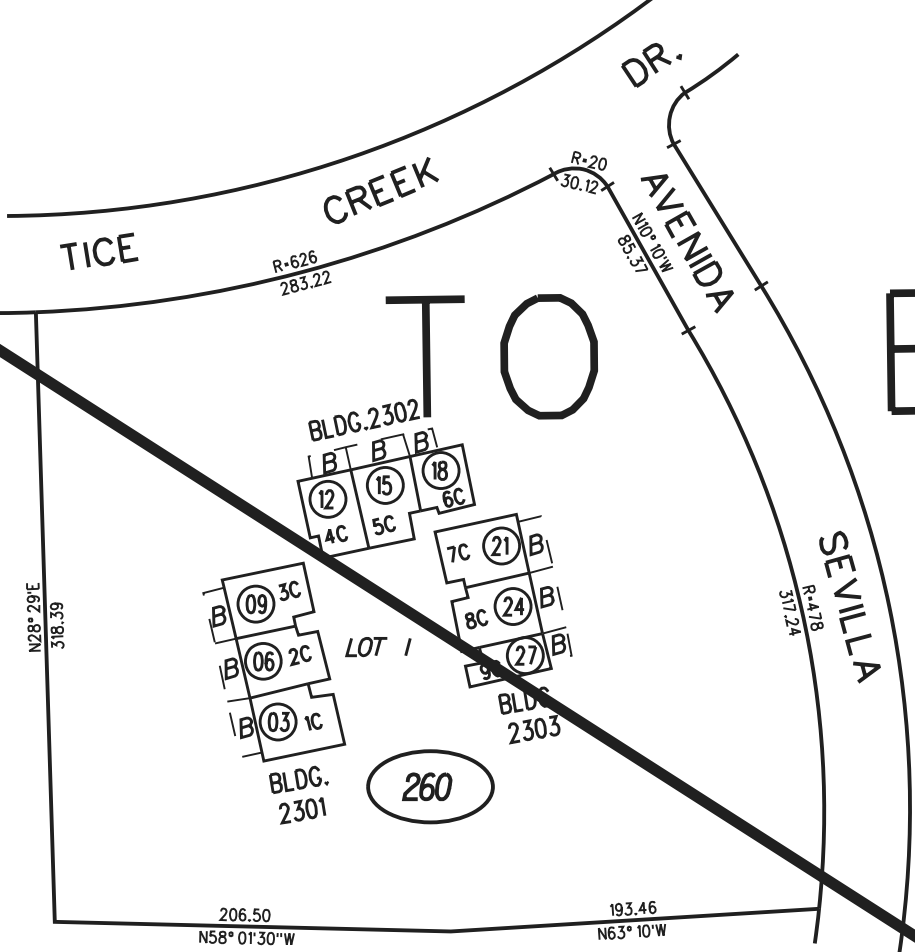


TO BK. 190-06

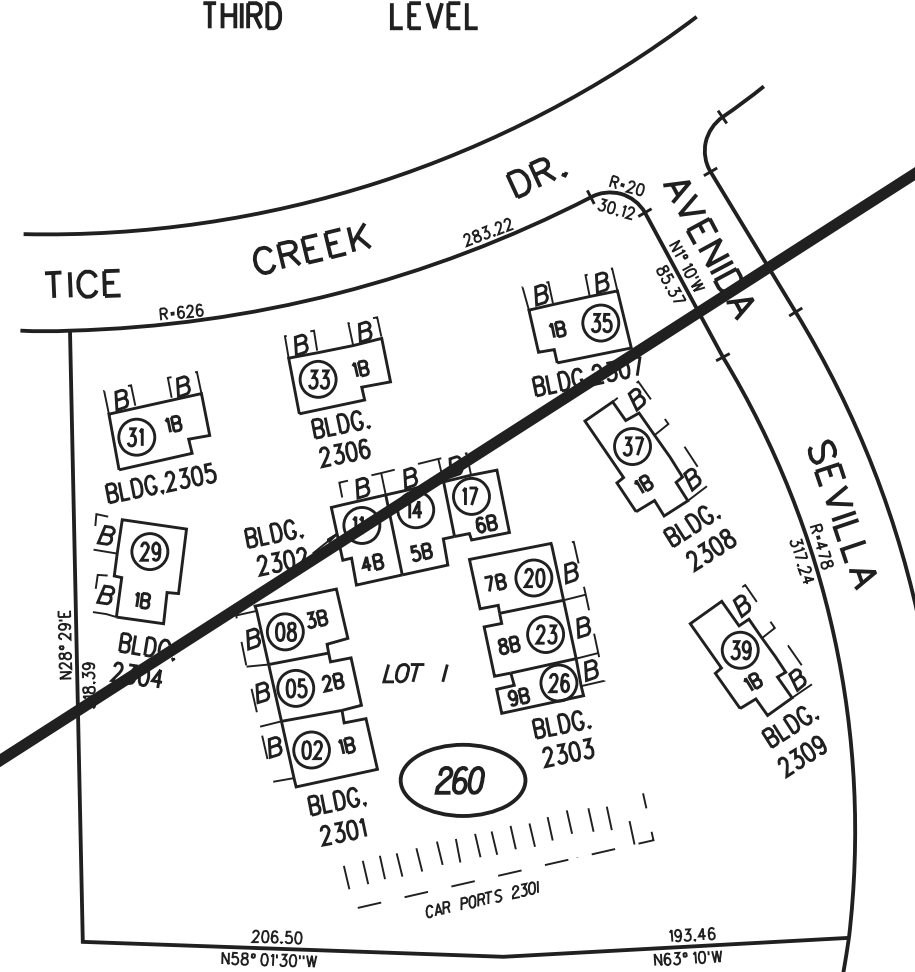
NOTE :

- 1-THE 39 PCLS. COMPRISE ALL OF THE REAL PROPERTY IN TR-3961
- 2-EACH PARCEL CONSISTS OF A FEE INTEREST IN THE SPACE SHOWN WITHIN THE SOLID LINES AND AN UNDIVIDED FRACTIONAL INT. IN THE COMMON AREA.
- 3-SEE THE COVENANTS, CONDITIONS AND RESTRICTIONS IN 619D OR 393.

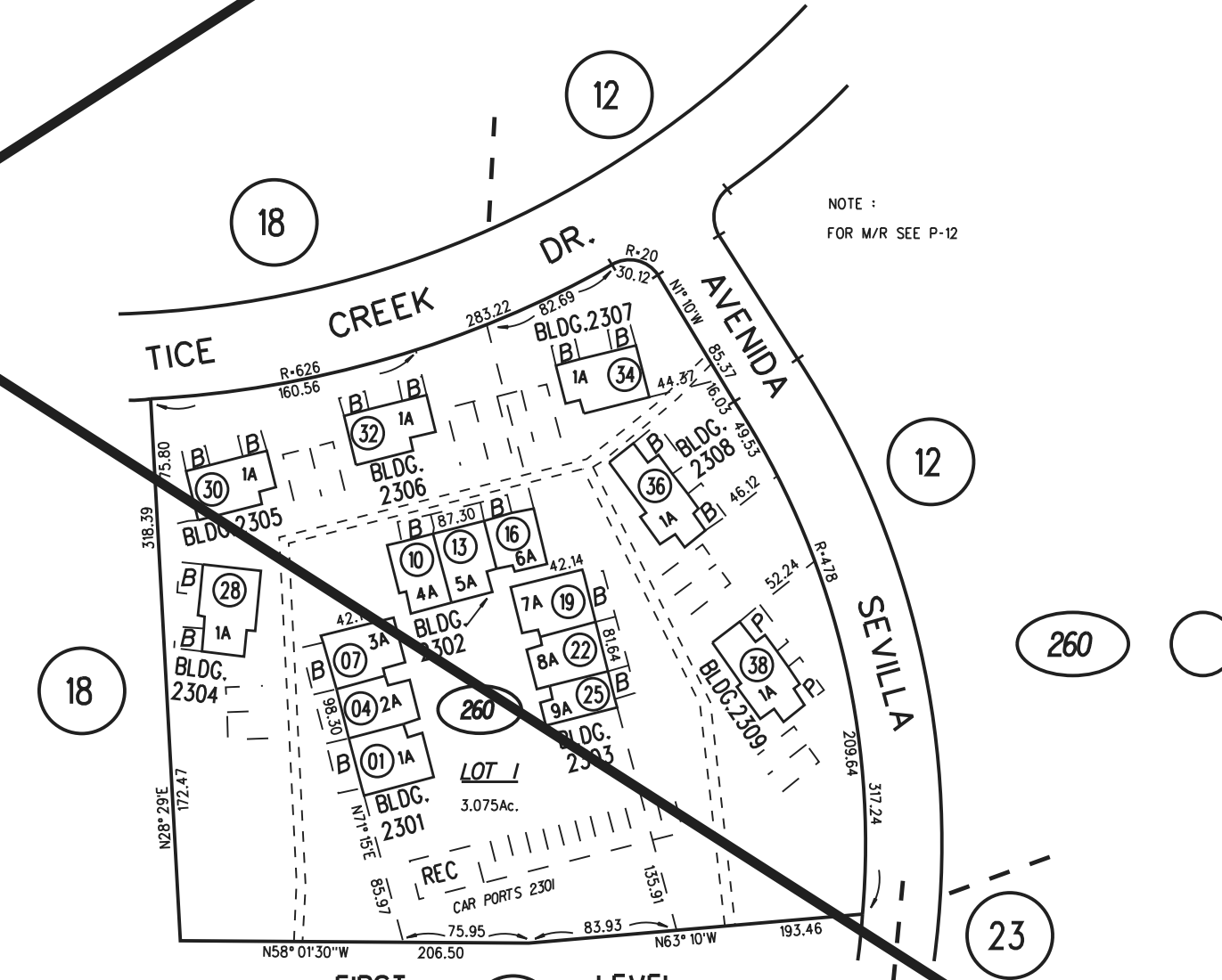
1"=100'



THIRD LEVEL



SECOND LEVEL



FIRST LEVEL

NOTE :
FOR M/R SEE P-12