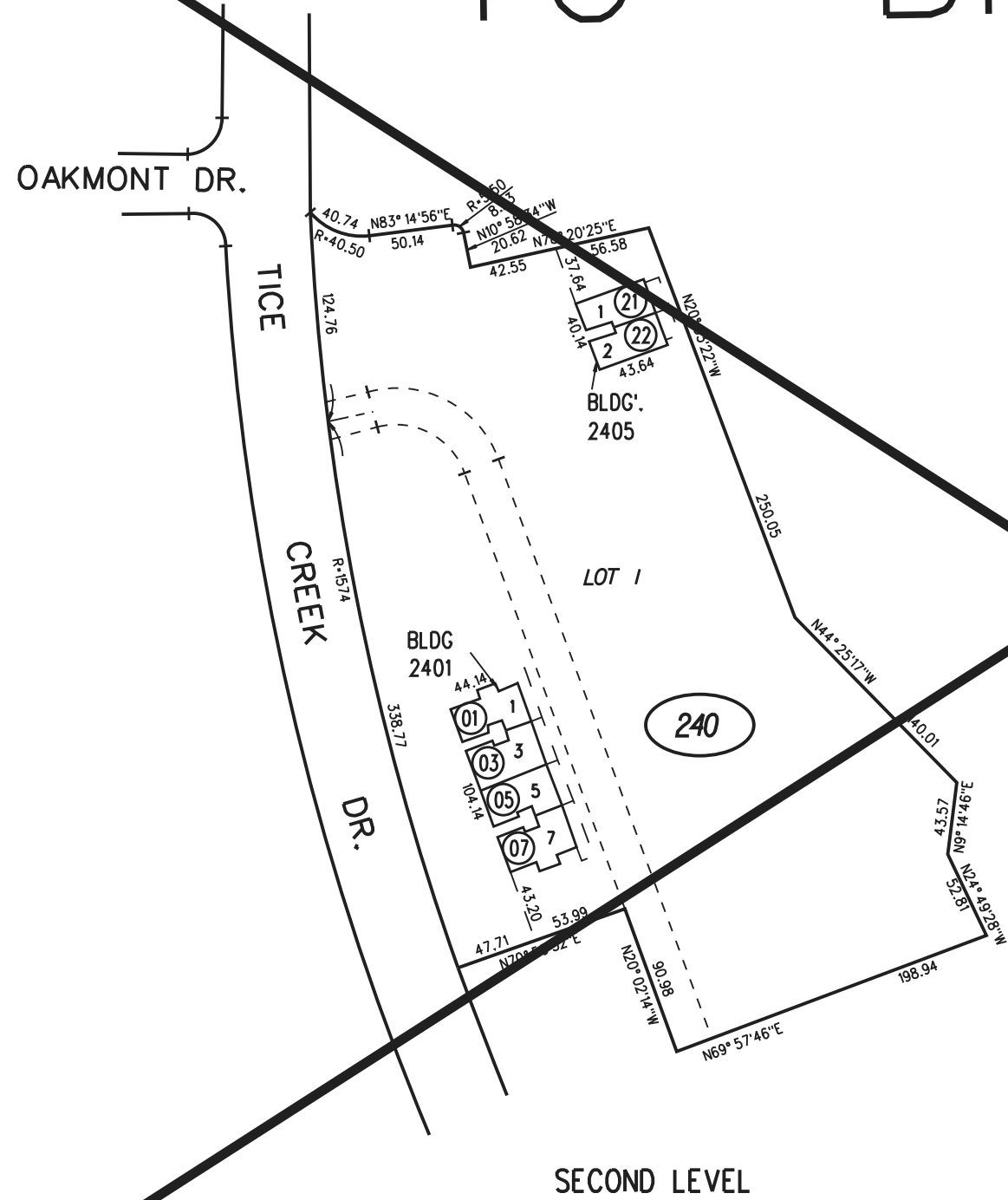


# TO BK. 186-14

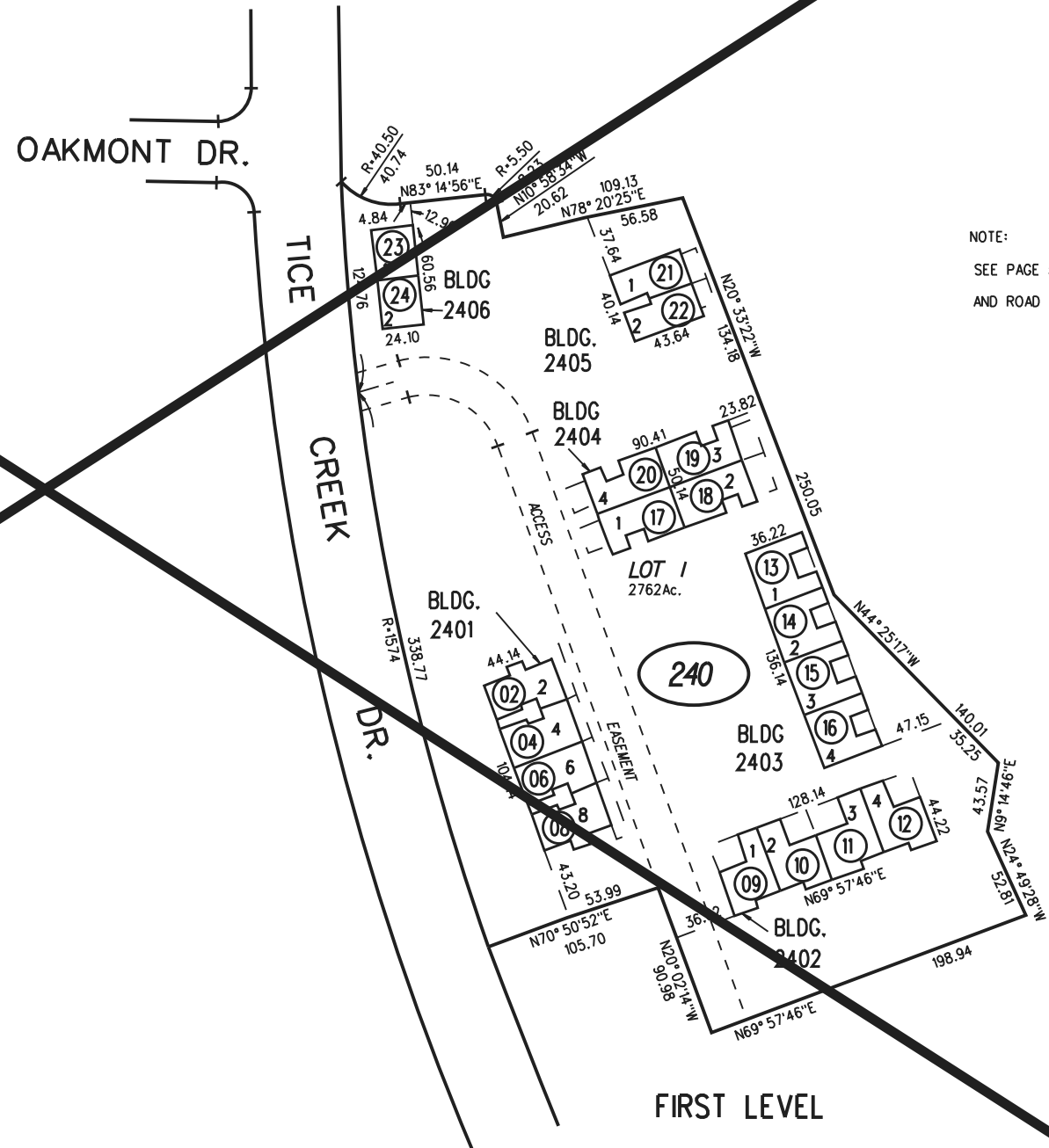


OAKMONT DR.

OAKMONT DR.



SECOND LEVEL



FIRST LEVEL

NOTE:  
SEE PAGE 5 FOR M/R  
AND ROAD ASSESSMENTS.



Sanborn Date : 11/06/1999

2-9-70 FM.189-16

ASSESSOR'S MAP

BOOK 189 PAGE 24

CONTRA COSTA COUNTY, CALIF.