

RO SAN RAMON

1- 27LSM46 5/20/1964

2- 166PM12 2/23/1995

B-1989 ROLL- TRACT 7159 MB 328-17 12/12/1988

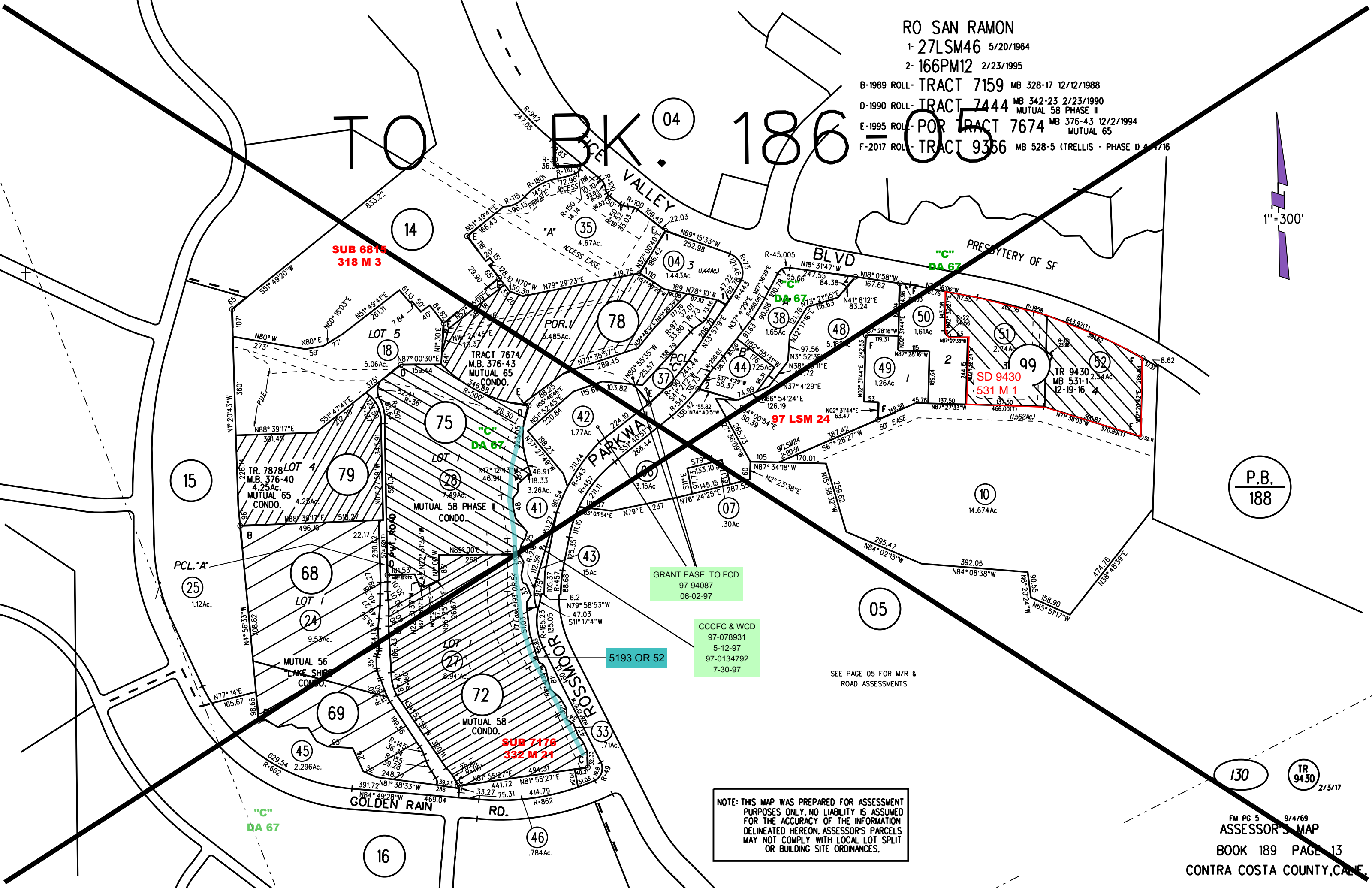
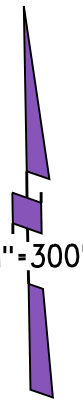
D-1990 ROLL- TRACT 7444 MB 342-23 2/23/1990

E-1995 ROLL- POR TRACT 7674 MB 376-43 12/2/1994

F-2017 ROLL- TRACT 9366 MB 528-5 (TRELLIS - PHASE I) 4/17/16

TO BK 186 - 05

1" = 300'



SUB 6815
318 M 3

SUB 7176
332 M 21

SD 9430
531 M 1

GRANT EASE TO FCD
97-94087
06-02-97

CCCFC & WCD
97-078931
5-12-97
97-0134792
7-30-97

5193 OR 52

NOTE: THIS MAP WAS PREPARED FOR ASSESSMENT PURPOSES ONLY. NO LIABILITY IS ASSUMED FOR THE ACCURACY OF THE INFORMATION DELINEATED HEREON. ASSESSOR'S PARCELS MAY NOT COMPLY WITH LOCAL LOT SPLIT OR BUILDING SITE ORDINANCES.

SEE PAGE 05 FOR M/R & ROAD ASSESSMENTS