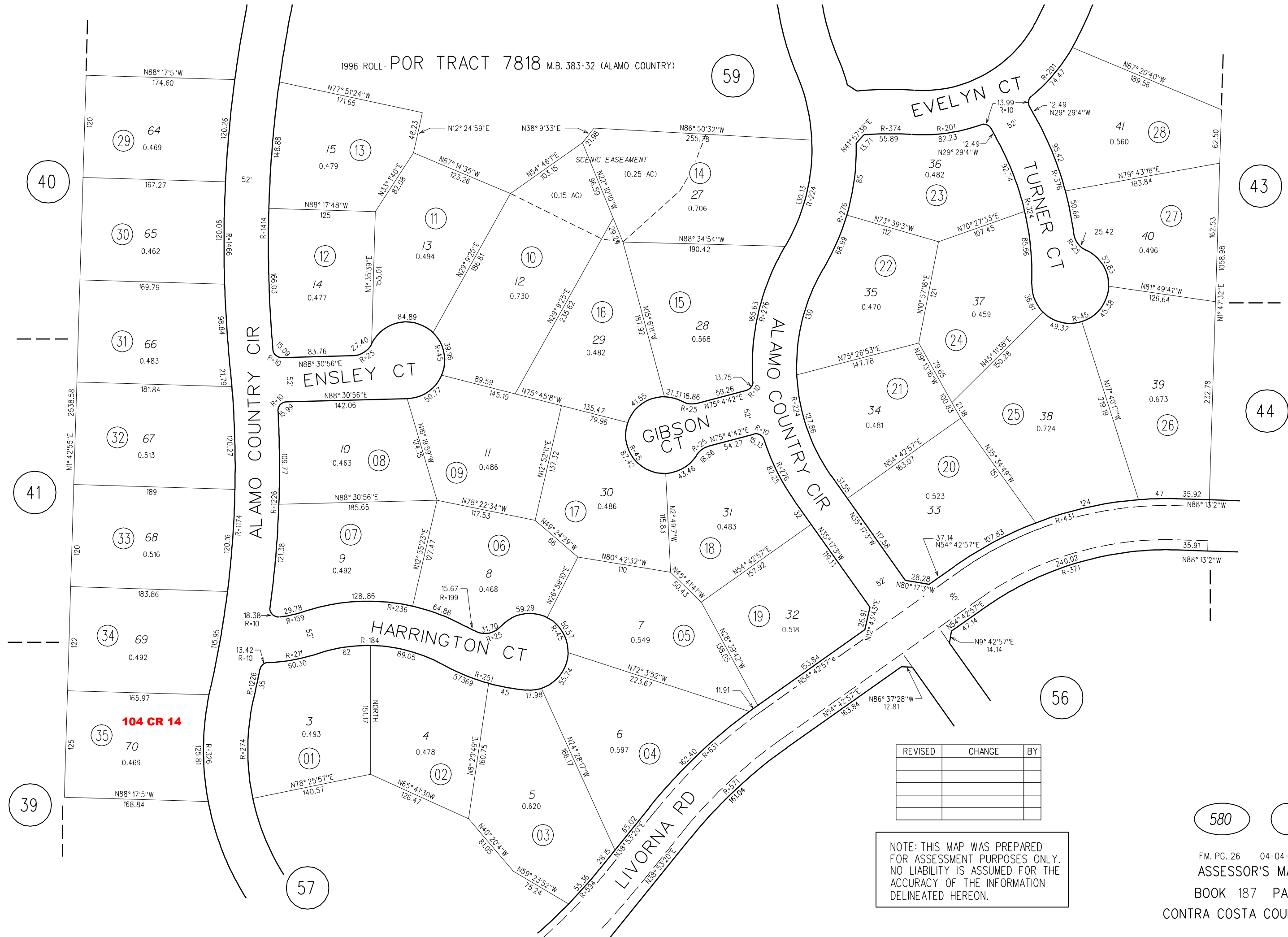


1996 ROLL - POR TRACT 7818 M.B. 383-32 (ALAMO COUNTRY)



29 64
0.469

30 65
0.462

31 66
0.483

32 67
0.513

33 68
0.516

34 69
0.492

35 70
0.469

140.57

126.47

15 13
0.479

12 14
0.477

10 11
0.486

09 11
0.486

08 11
0.486

07 9
0.492

06 8
0.468

05 7
0.549

04 6
0.597

11 13
0.494

10 12
0.730

09 11
0.486

08 11
0.486

07 9
0.492

06 8
0.468

05 7
0.549

04 6
0.597

14 27
0.706

15 28
0.568

16 29
0.482

17 30
0.486

18 31
0.483

19 32
0.518

20 32
0.518

21 34
0.481

22 35
0.470

14 27
0.706

15 28
0.568

16 29
0.482

17 30
0.486

18 31
0.483

19 32
0.518

20 32
0.518

21 34
0.481

22 35
0.470

23 36
0.482

24 37
0.459

25 38
0.724

26 47
35.92

27 40
0.496

28 41
0.560

29 42
62.50

30 43
162.53

31 44
232.78

23 36
0.482

24 37
0.459

25 38
0.724

26 47
35.92

27 40
0.496

28 41
0.560

29 42
62.50

30 43
162.53

31 44
232.78

104 CR 14

REVISED	CHANGE	BY

NOTE: THIS MAP WAS PREPARED FOR ASSESSMENT PURPOSES ONLY. NO LIABILITY IS ASSUMED FOR THE ACCURACY OF THE INFORMATION DELINEATED HEREON.

580