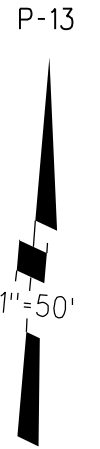


17

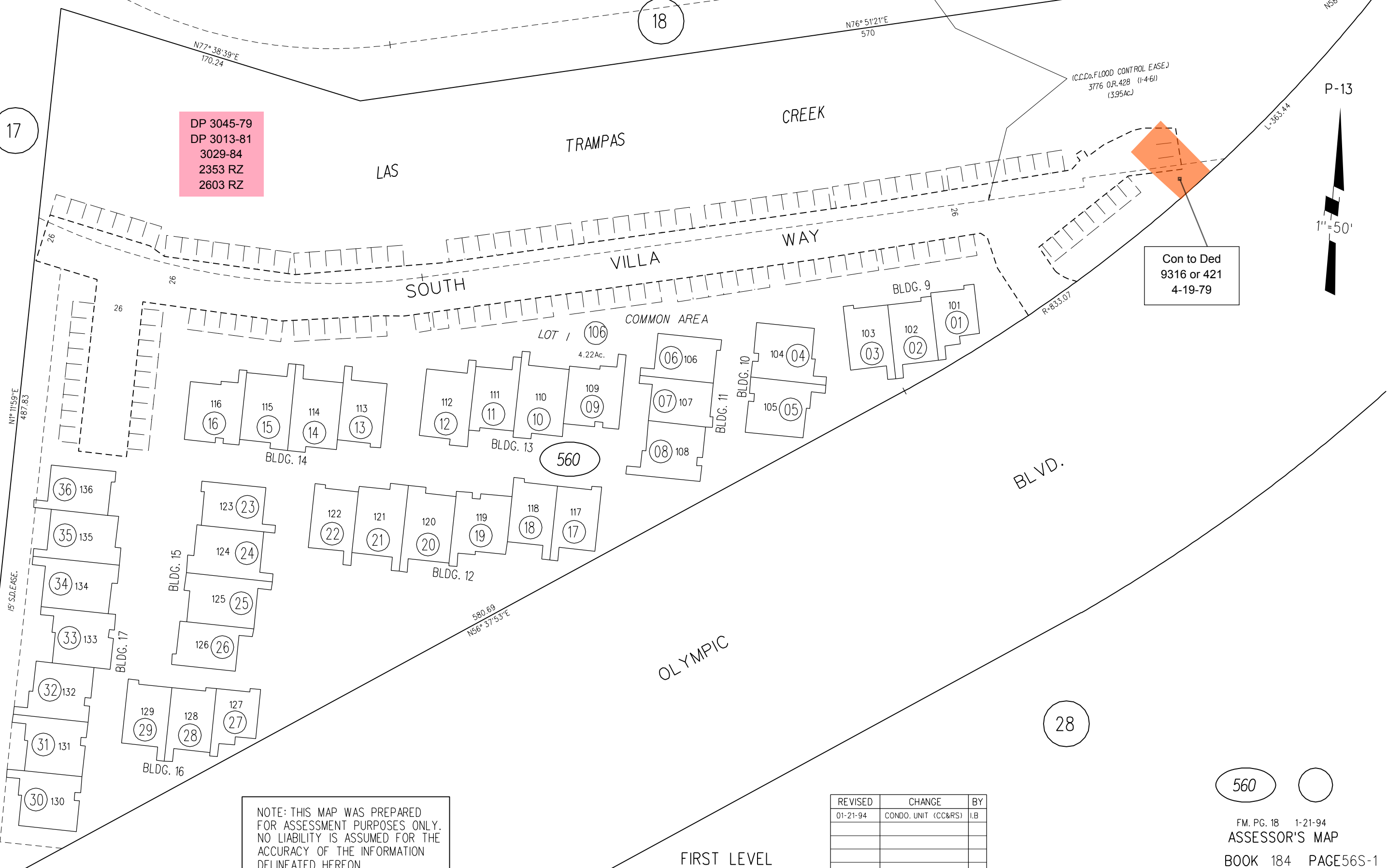
18

DP 3045-79  
DP 3013-81  
3029-84  
2353 RZ  
2603 RZ

(C.C.Co. FLOOD CONTROL EASE.)  
3776 O.R. 42B (1-4-61)  
(3.95Ac.)



Con to Ded  
9316 or 421  
4-19-79



NOTE: THIS MAP WAS PREPARED FOR ASSESSMENT PURPOSES ONLY. NO LIABILITY IS ASSUMED FOR THE ACCURACY OF THE INFORMATION DELINEATED HEREON.

FIRST LEVEL

REVISED	CHANGE	BY
01-21-94	CONDO. UNIT (CC&RS)	I.B

560