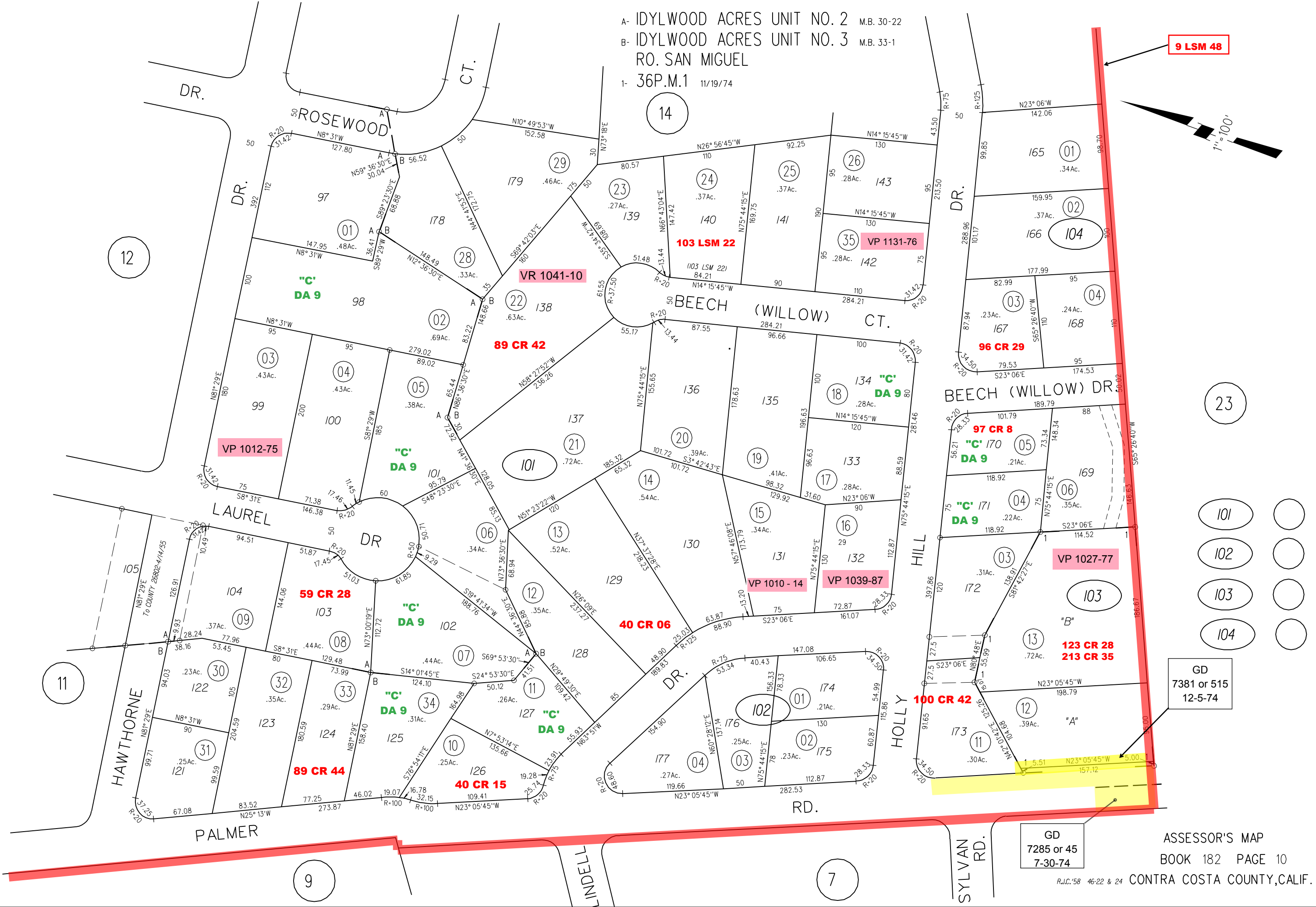
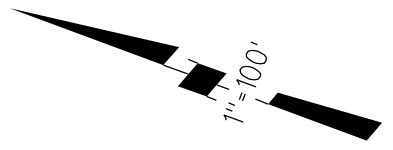


A- IDYLWOOD ACRES UNIT NO. 2 M.B. 30-22
 B- IDYLWOOD ACRES UNIT NO. 3 M.B. 33-1
 RO. SAN MIGUEL
 1- 36P.M.1 11/19/74

9 LSM 48



23

101

102

103

104

GD
7381 or 515
12-5-74

GD
7285 or 45
7-30-74

ASSESSOR'S MAP
BOOK 182 PAGE 10

R.J.C.'58 46-22 & 24 CONTRA COSTA COUNTY, CALIF.