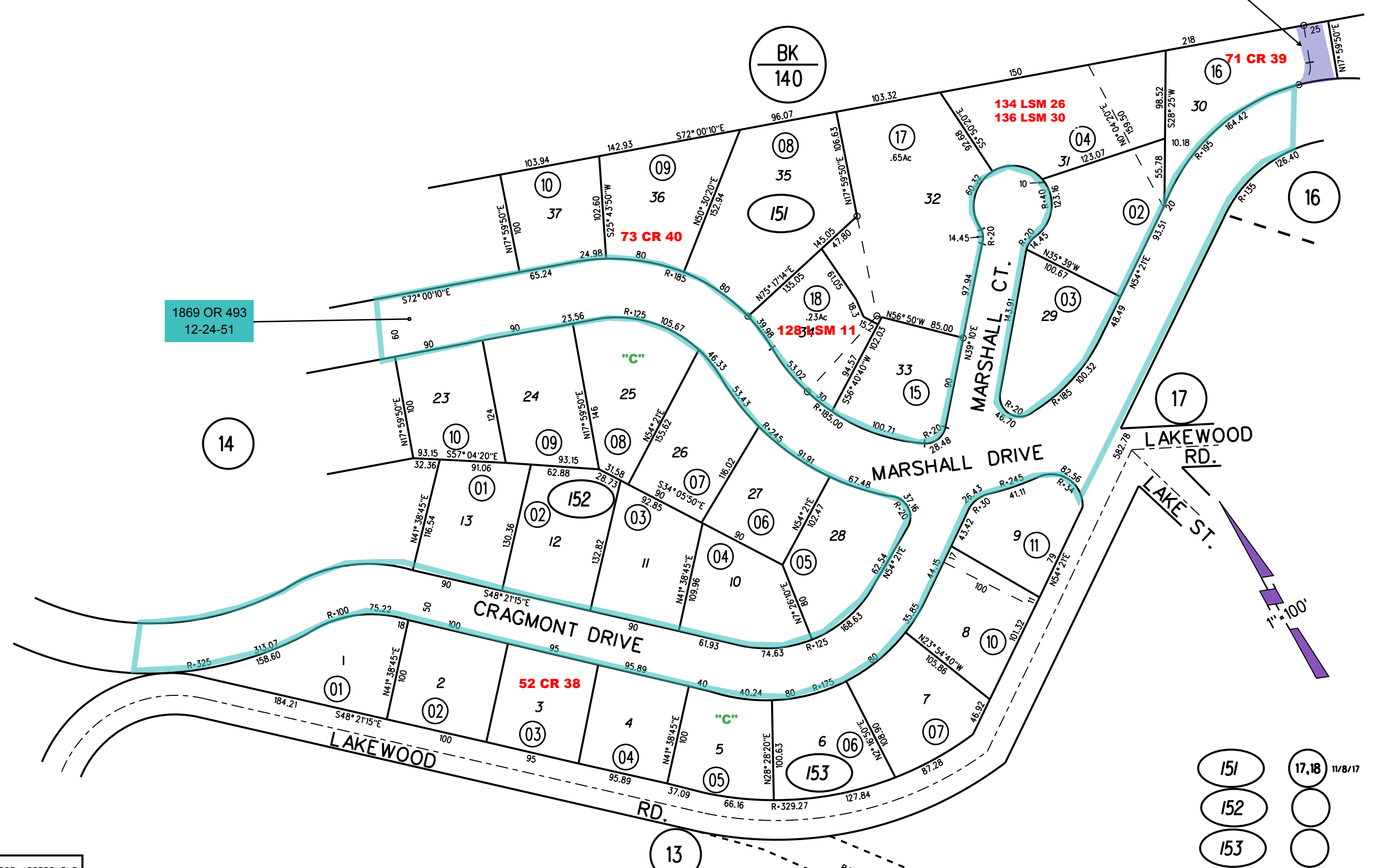


LOTS 1-13 & 23-37 INDIAN VALLEY PORTAL

M.B. 37-9&10

ABANDONED  
9882 OR 616  
6-17-80



1869 OR 493  
12-24-51

NOTE: THIS MAP WAS PREPARED FOR ASSESSMENT PURPOSES ONLY. NO LIABILITY IS ASSUMED FOR THE ACCURACY OF THE INFORMATION DELINEATED HEREON. ASSESSOR'S PARCELS MAY NOT COMPLY WITH LOCAL LOT SPLIT OR BUILDING SITE ORDINANCES.

151 17,18 11/8/17  
152  
153