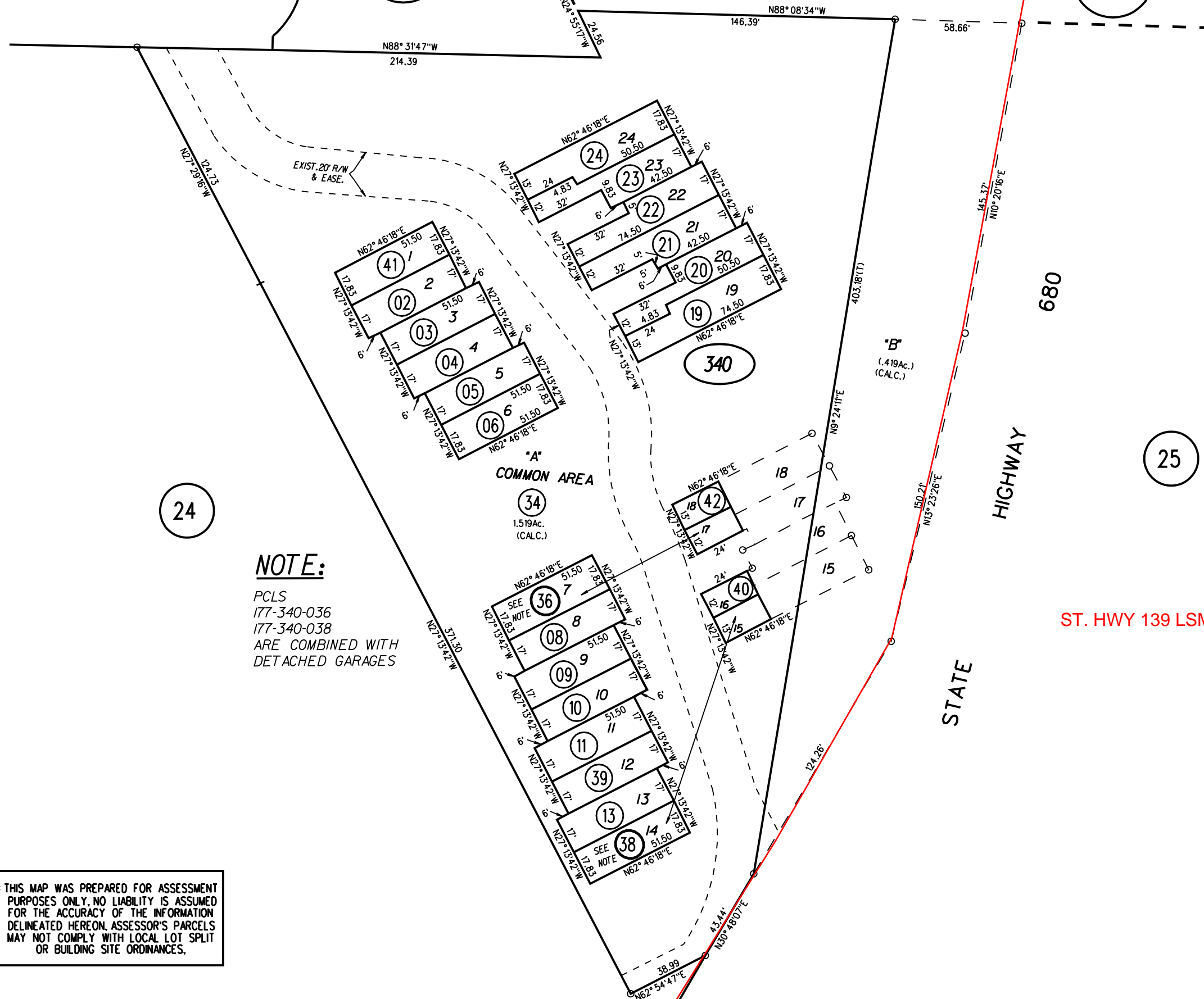


1989 ROLL - TRACT 6681 M.B. 322,-17 "VISTA HERMOSE" P.U.D.(C.C.& R.'S 14865/12-3-89)  
 1992 ROLL - AMENDED TR.6681 M.B. 357-17 CERT. OF CORR. 14675/556 10-26-88

VISTA HERMOSE

P.B.  
175

P.B.  
174



24

**NOTE:**  
 PCLS  
 177-340-036  
 177-340-038  
 ARE COMBINED WITH  
 DETACHED GARAGES

\*A\*  
 COMMON AREA  
 34  
 1.519Ac.  
 (CALC.)

\*B\*  
 (.419Ac.)  
 (CALC.)

25

680

HIGHWAY

ST. HWY 139 LSM 44

STATE

340

41,42  
7/1/11

NOTE: THIS MAP WAS PREPARED FOR ASSESSMENT PURPOSES ONLY. NO LIABILITY IS ASSUMED FOR THE ACCURACY OF THE INFORMATION DELINEATED HEREON. ASSESSOR'S PARCELS MAY NOT COMPLY WITH LOCAL LOT SPLIT OR BUILDING SITE ORDINANCES.