

BEACONDALE UNIT NO. 2

M.B. 26-869

1- 58P.M.16 9-27-77

A- 1986 ROLL- TR. 6079

(BEACONDALE UNIT 2) M.B. 305-23

2- 69P.M.41 7-13-78

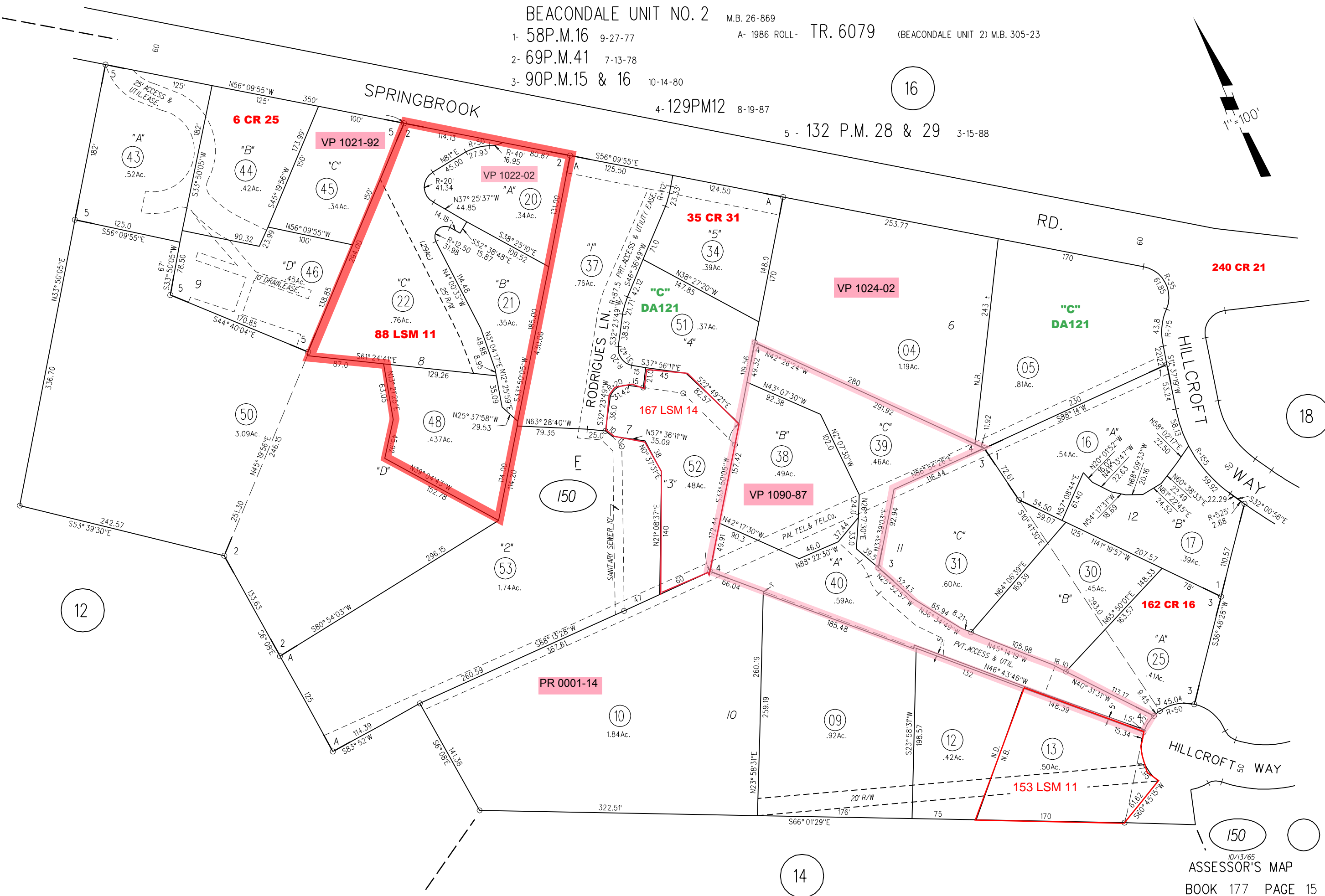
3- 90P.M.15 & 16 10-14-80

4- 129PM12 8-19-87

5 - 132 P.M. 28 & 29 3-15-88

16

1"=100'



12

150

18

PR 0001-14

10

09

12

13

150

14