

P.B.
178

P.B.
178

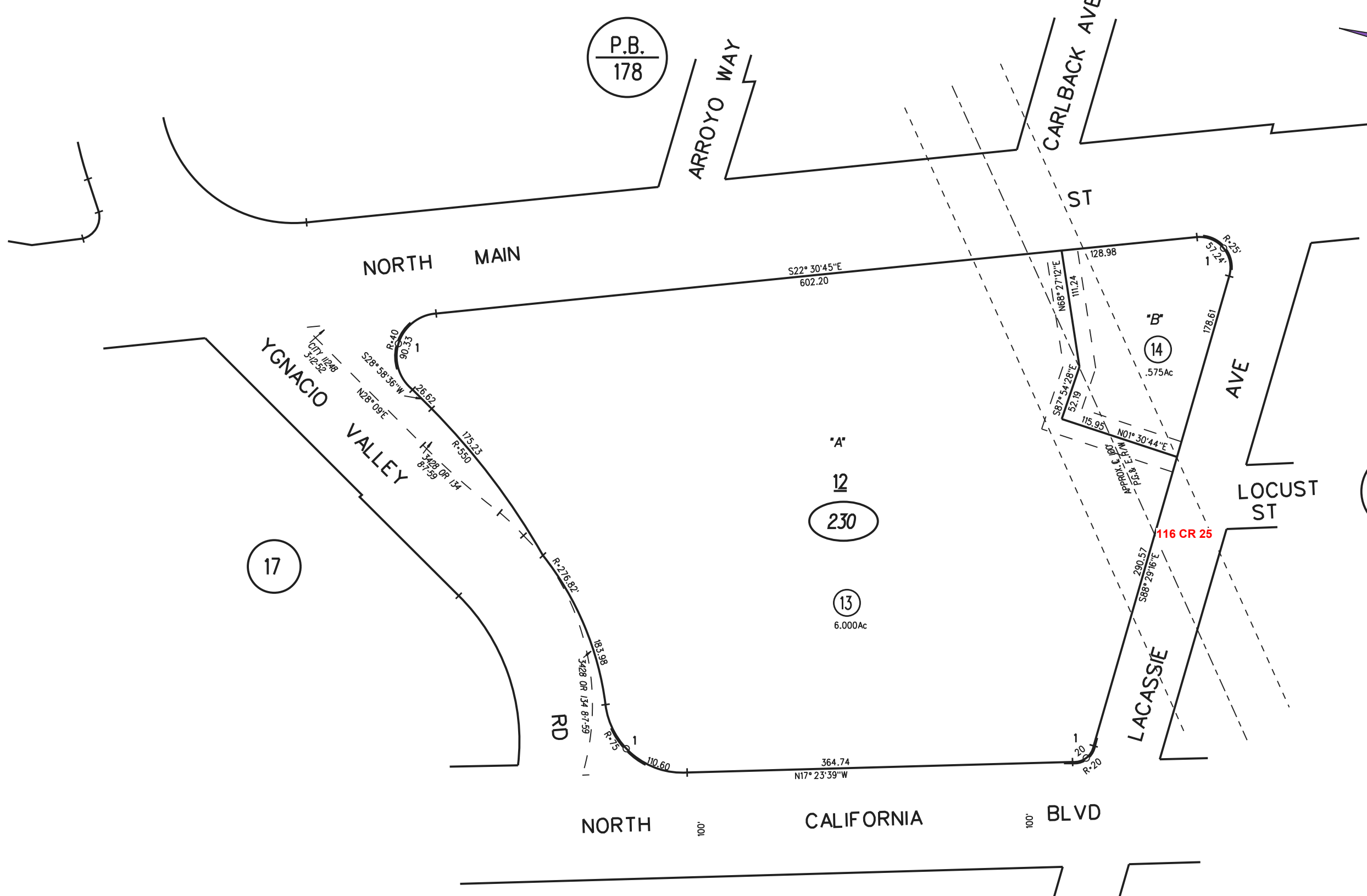
230

211
PM7
9/27/16

ASSESSOR'S MAP
BOOK 174 PAGE 23

FR. 19-12
5-14-63 CONTRA COSTA COUNTY, CALIF.

Sanborn Date : 19/03/1999



17

12
230

13
6.000Ac

14
.575Ac

22

NOTE: THIS MAP WAS PREPARED FOR ASSESSMENT PURPOSES ONLY. NO LIABILITY IS ASSUMED FOR THE ACCURACY OF THE INFORMATION DELINEATED HEREON. ASSESSOR'S PARCELS MAY NOT COMPLY WITH LOCAL LOT SPLIT OR BUILDING SITE ORDINANCES.