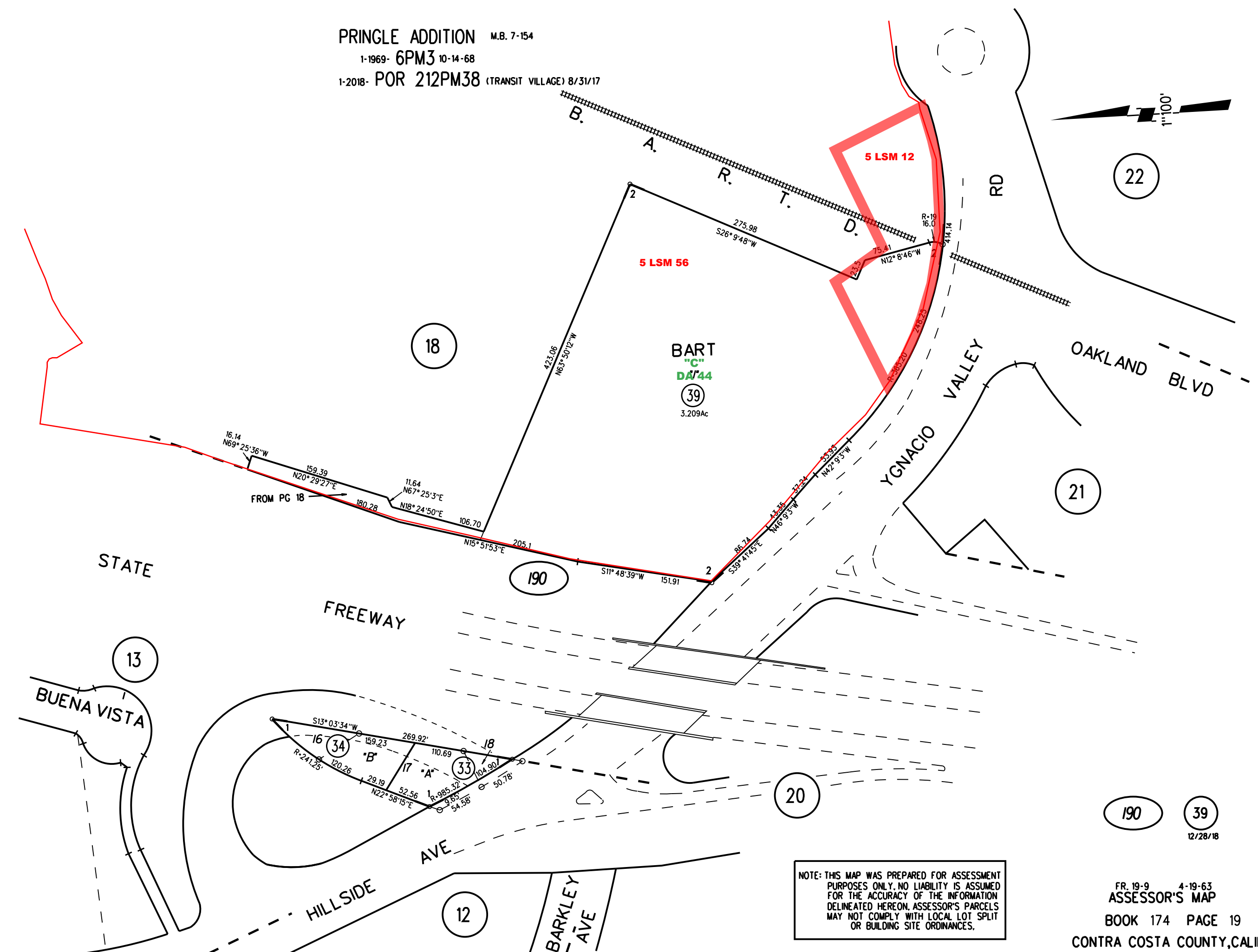


PRINGLE ADDITION M.B. 7-154
 1-1969- 6PM3 10-14-68
 1-2018- POR 212PM38 (TRANSIT VILLAGE) 8/31/17



NOTE: THIS MAP WAS PREPARED FOR ASSESSMENT PURPOSES ONLY. NO LIABILITY IS ASSUMED FOR THE ACCURACY OF THE INFORMATION DELINEATED HEREON. ASSESSOR'S PARCELS MAY NOT COMPLY WITH LOCAL LOT SPLIT OR BUILDING SITE ORDINANCES.

190 39
 12/28/18

FR. 19-9 4-19-63
 ASSESSOR'S MAP
 BOOK 174 PAGE 19
 CONTRA COSTA COUNTY, CALIF.