

P.B.
171

JONES

RD.

S23°04'07"W
99.27

R-4530
76.30

N88°46'01"W
236.72

S88°46'01"E

S1°13'59"W
163.86

N88°46'01"W

270

327.07

N1°13'59"E

571.42

14

190

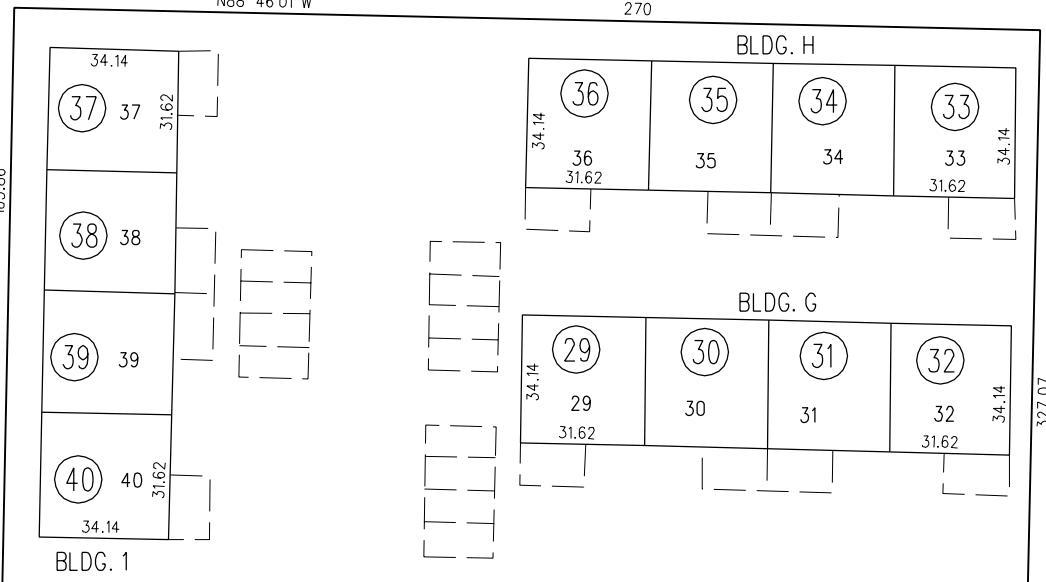
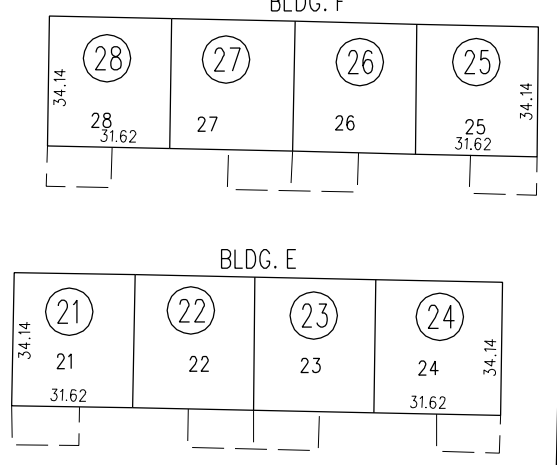
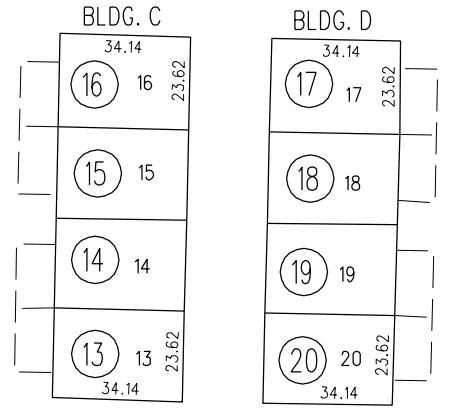
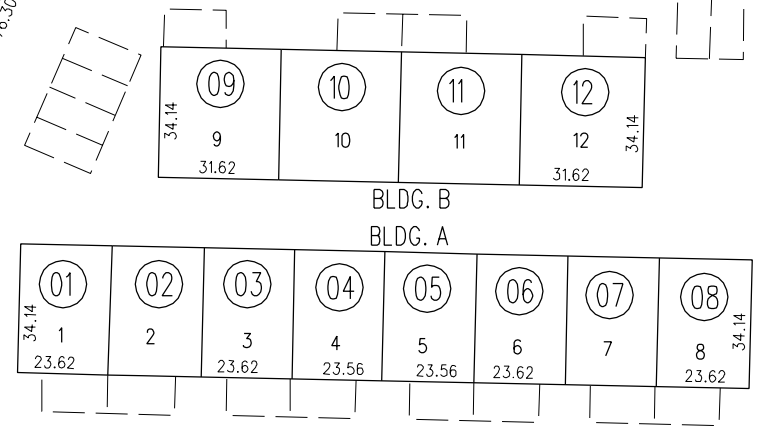
14

18

13

190

190



COMMON AREA

41 2.15Ac.