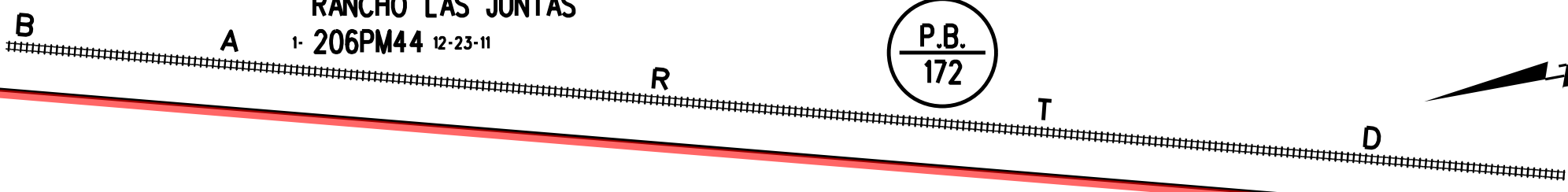


RANCHO LAS JUNTAS

1- 206PM44 12-23-11

P.B.
172



STATE

FREEWAY

GEARY

RD

P.B.
148

112 LSM 18
123 LSM 43

51 LSM 28

DP 3035-76
DP 3016-77
DP 3044-77
DP 3031-74

LP 2140-77

"C"
DA 44B

"C"
DA 44B

139
LSM 25

64 LSM 17

NOTE: THIS MAP WAS PREPARED FOR ASSESSMENT PURPOSES ONLY. NO LIABILITY IS ASSUMED FOR THE ACCURACY OF THE INFORMATION DELINEATED HEREON. ASSESSOR'S PARCELS MAY NOT COMPLY WITH LOCAL LOT SPLIT OR BUILDING SITE ORDINANCES.

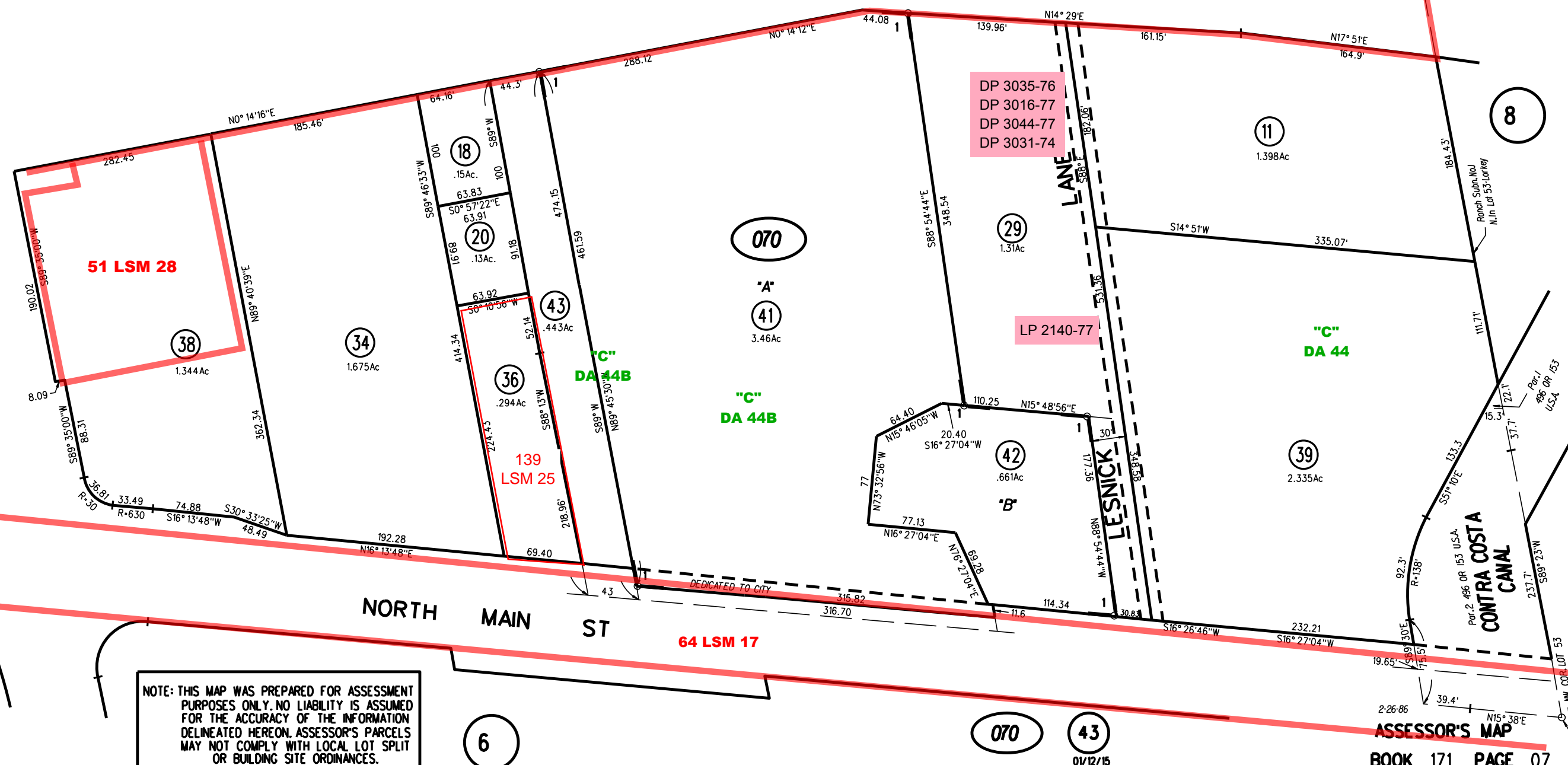
ASSESSOR'S MAP

BOOK 171 PAGE 07

CONTRA COSTA COUNTY, CALIF.

FR. 43-31 7-8-63

Sanborn Date : 19/03/1999



CONTRA COSTA CANAL

Par. 2 496 OR 153 U.S.A.

Par. 1 496 OR 153 U.S.A.

Par. 1 496 OR 153 U.S.A.