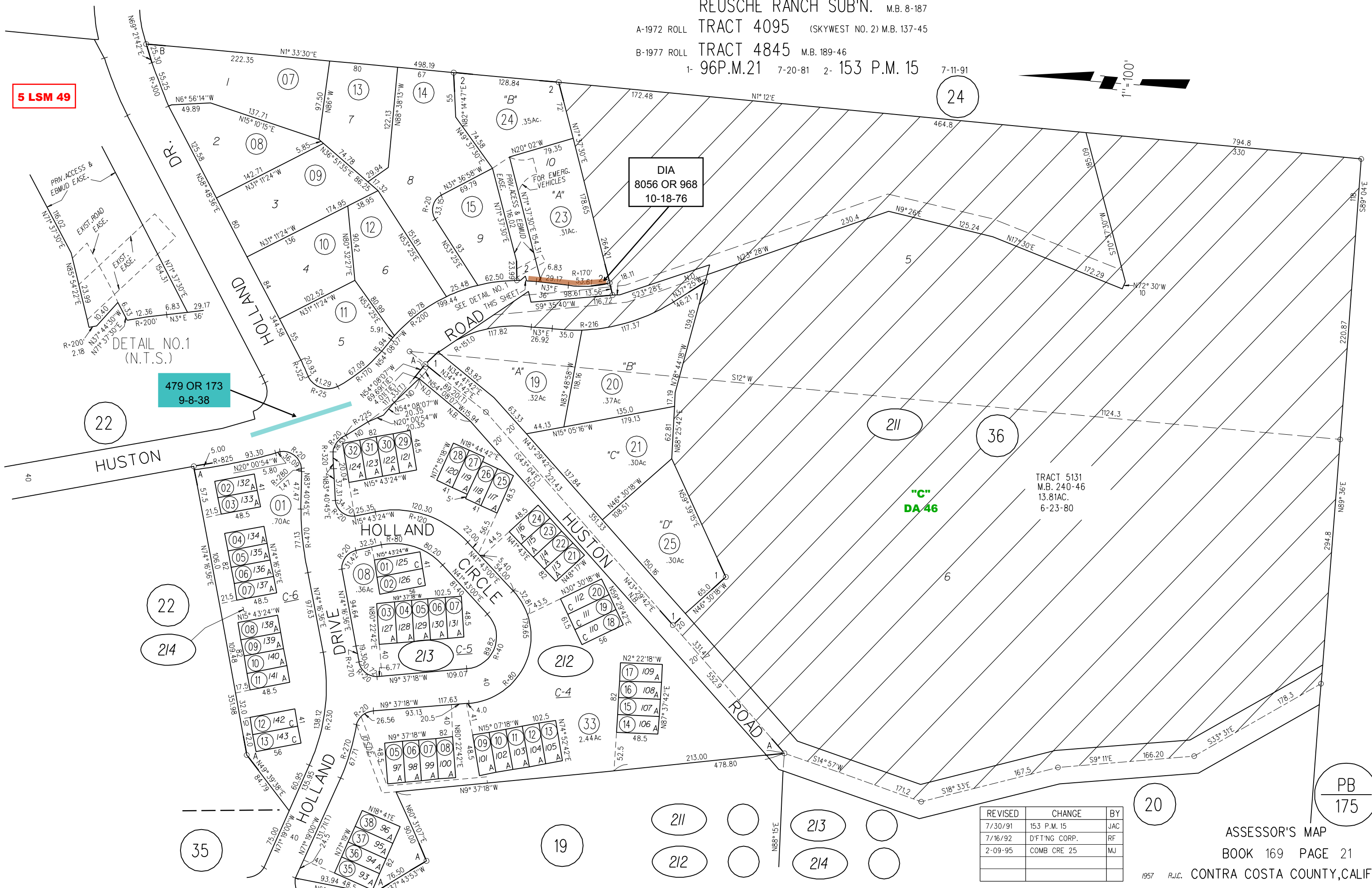


5 LSM 49

DIA
8056 OR 968
10-18-76

479 OR 173
9-8-38

"C"
DA 46



REVISED	CHANGE	BY
7/30/91	153 P.M. 15	JAC
7/16/92	D'FT'NG CORP.	RF
2-09-95	COMB CRE 25	MJ

20

PB
175