

1981 - TRACT 5847 M.B. 245-10 (MUIR STATION PARK)

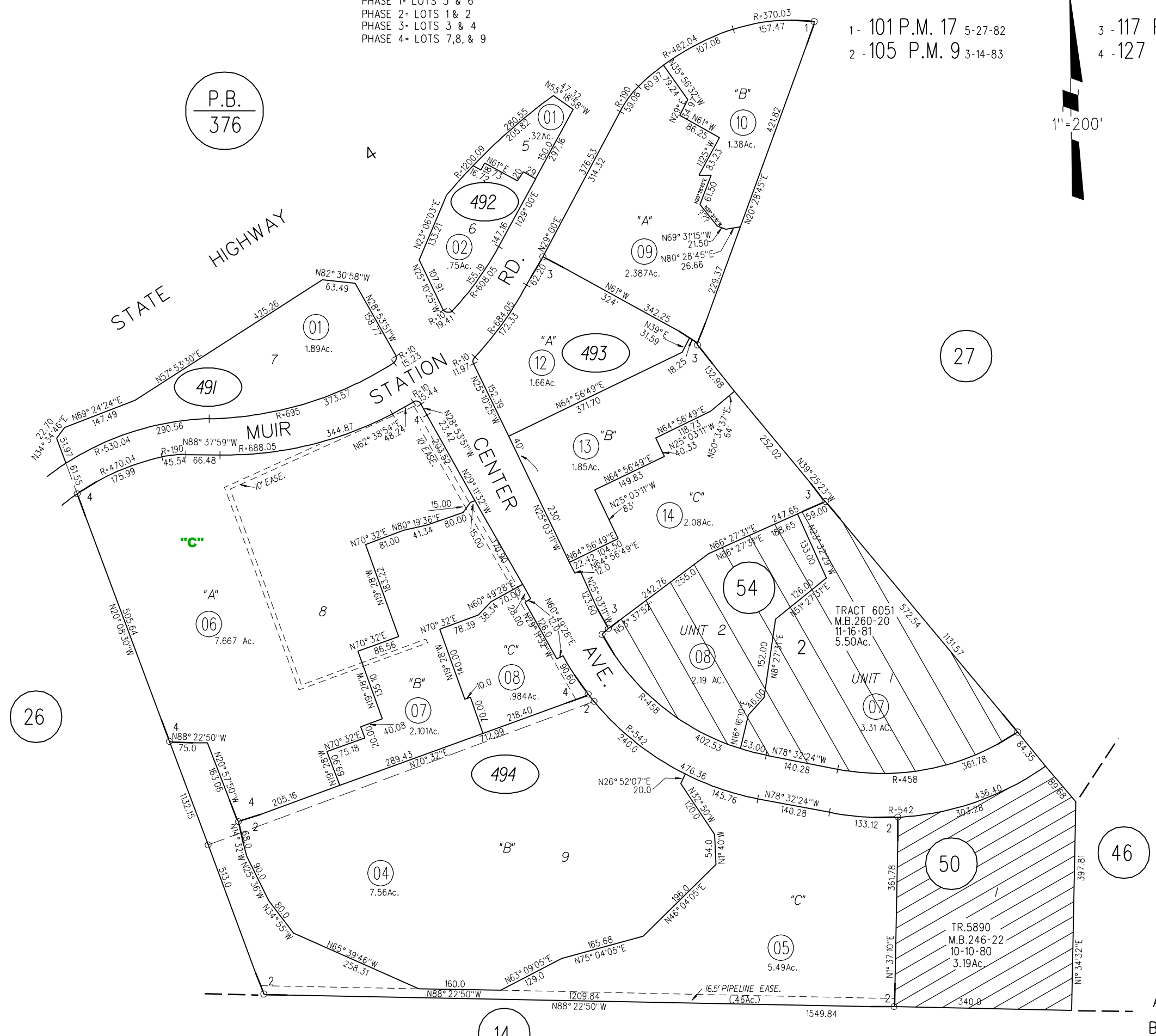
PHASE 1- LOTS 5 & 6
 PHASE 2- LOTS 1 & 2
 PHASE 3- LOTS 3 & 4
 PHASE 4- LOTS 7,8, & 9

1 - 101 P.M. 17 5-27-82
 2 - 105 P.M. 9 3-14-83

3 - 117 P.M. 36 & 37 8-15-85
 4 - 127 P.M. 30 & 31 5-13-87

P.B.
 376

1" = 200'



- 491
- 492
- 493
- 494

46

50

14