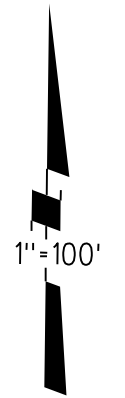
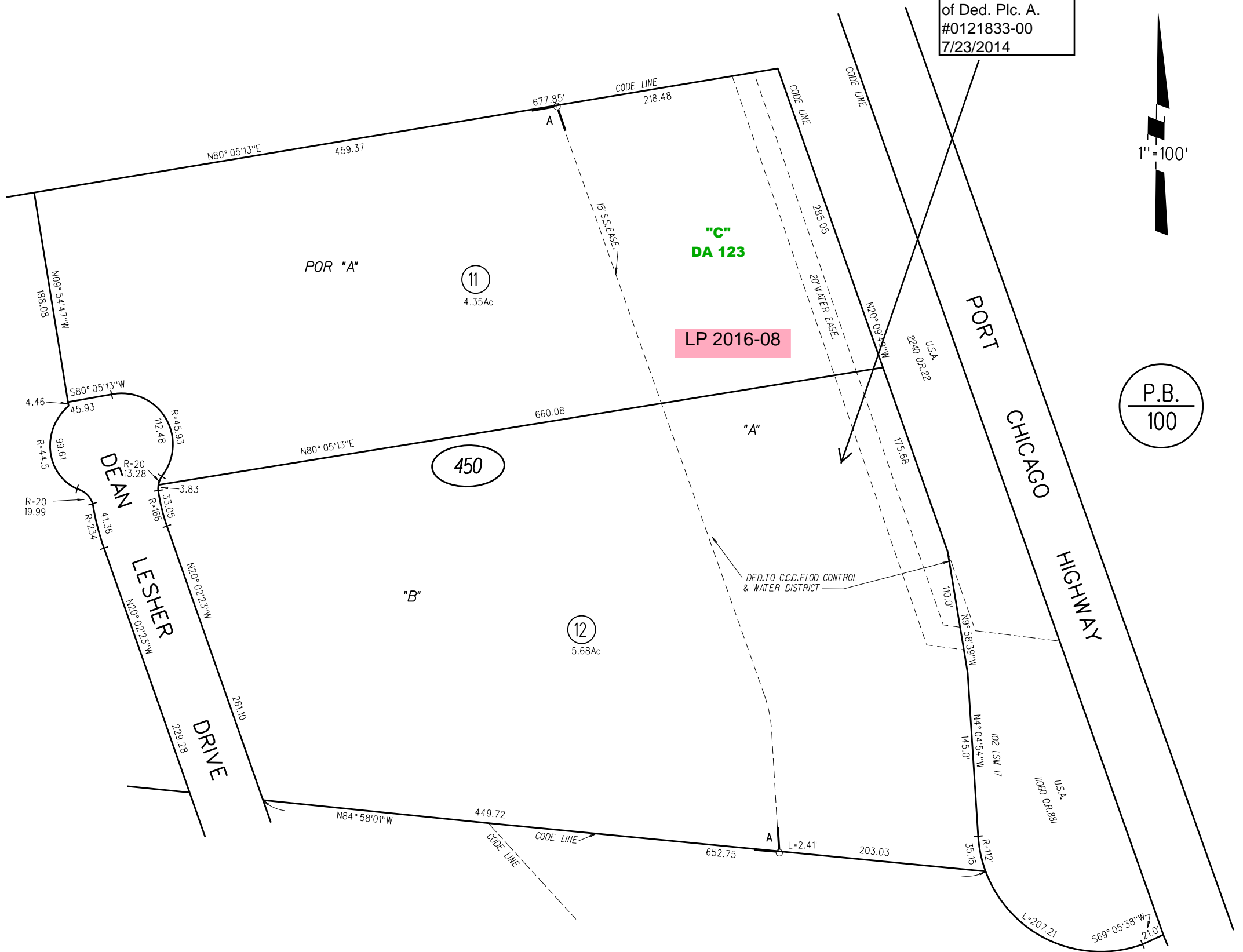


Termination of off.
of Ded. Plc. A.
#0121833-00
7/23/2014



04



P.B.
100

NOTE: THIS MAP WAS PREPARED FOR ASSESSMENT PURPOSES ONLY. NO LIABILITY IS ASSUMED FOR THE ACCURACY OF THE INFORMATION DELINEATED HEREON. ASSESSOR'S PARCELS MAY NOT COMPLY WITH LOCAL LOT SPLIT OR BUILDING SITE ORDINANCES.

450

11,12
7/31/14

8-30-89
1.B.
FM. PG. 04 11-16-88
ASSESSOR'S MAP

BOOK 159 PAGE 45

I.B. CONTRA COSTA COUNTY, CALIF.